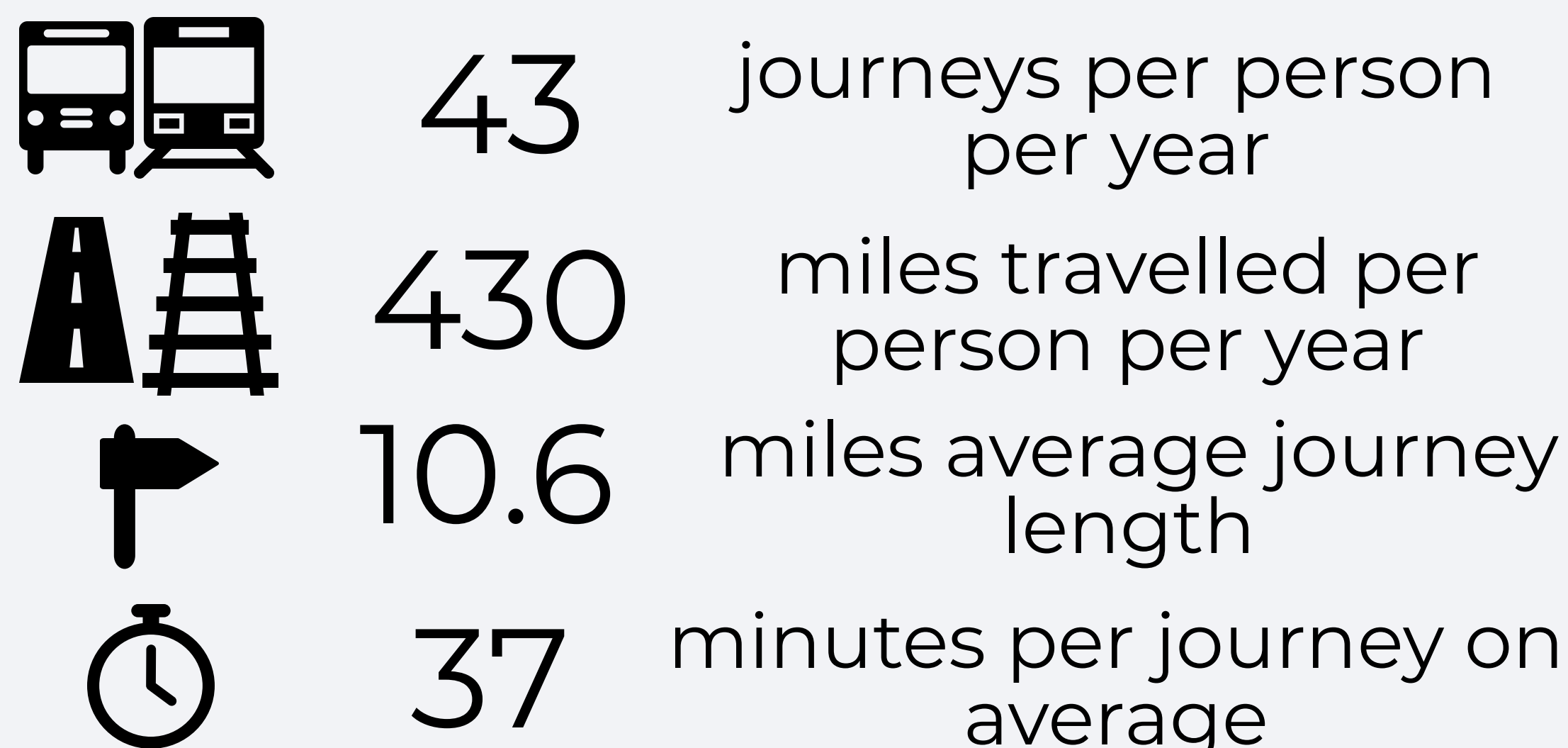
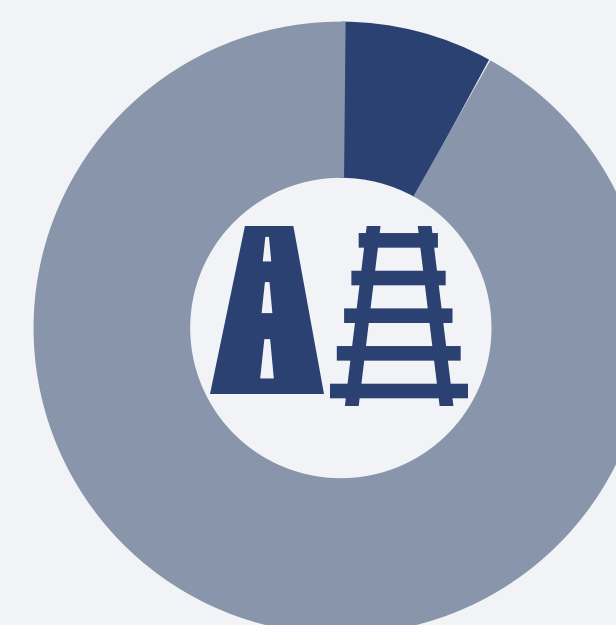


Public transport in Northern Ireland

Key public transport facts



8% of all distance travelled



8% of all journeys of 5 miles and over

Satisfaction with public transport⁺



75% of respondents* said they were satisfied with their local public transport services

*of those who used public transport

What would encourage respondents to use public transport more often?⁺

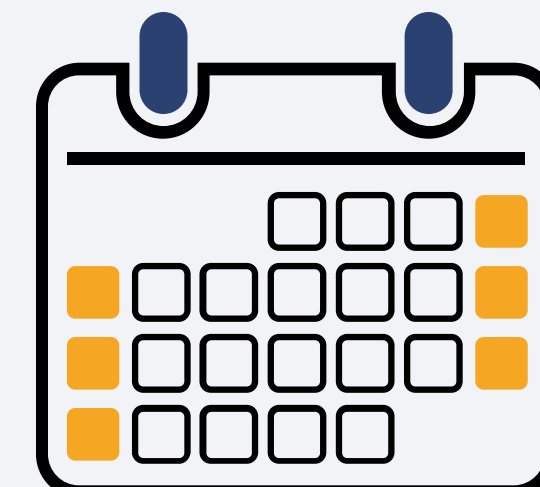
Cheaper fares

26%



More frequent weekend services

18%

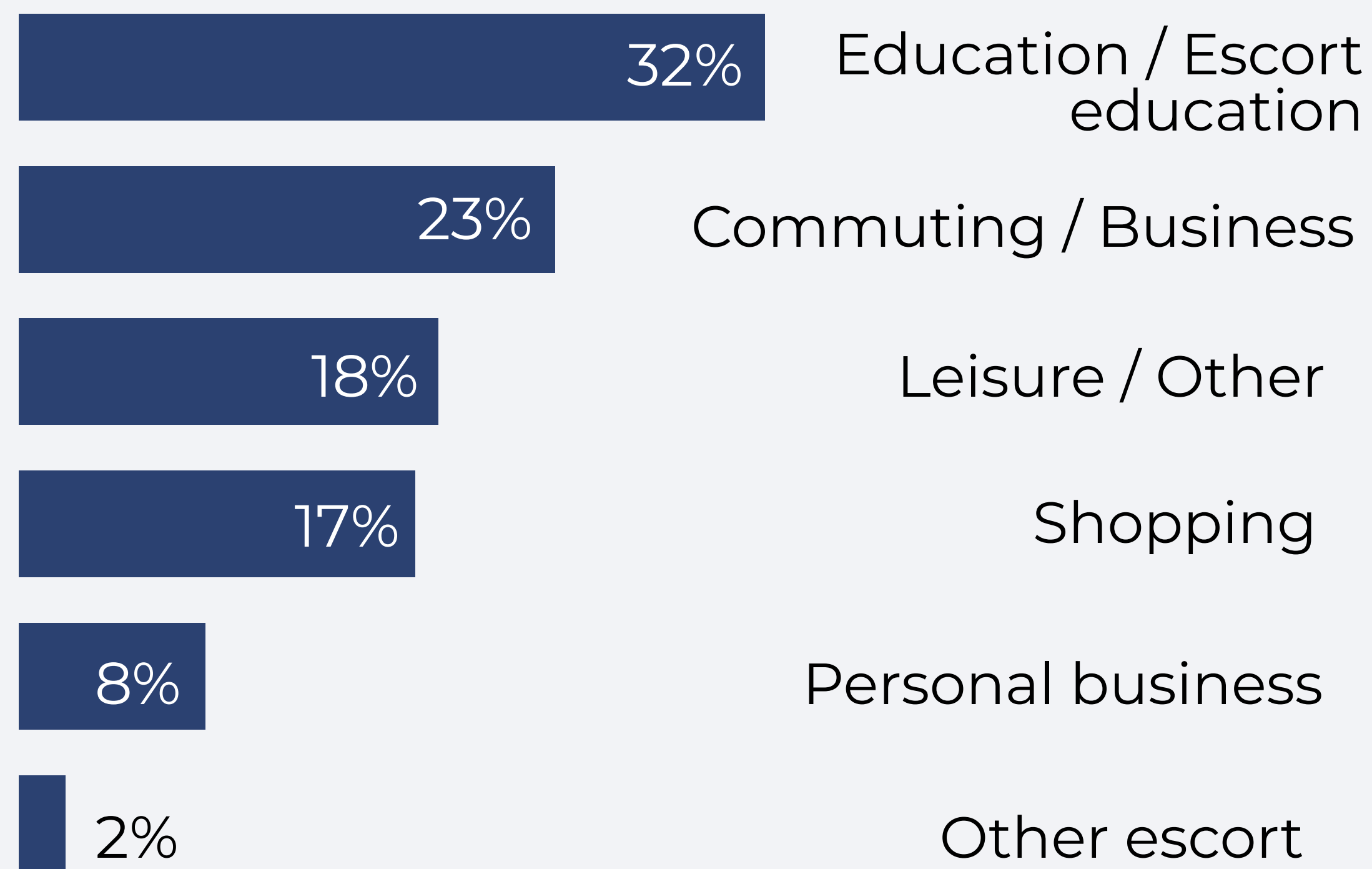


More destinations or routes

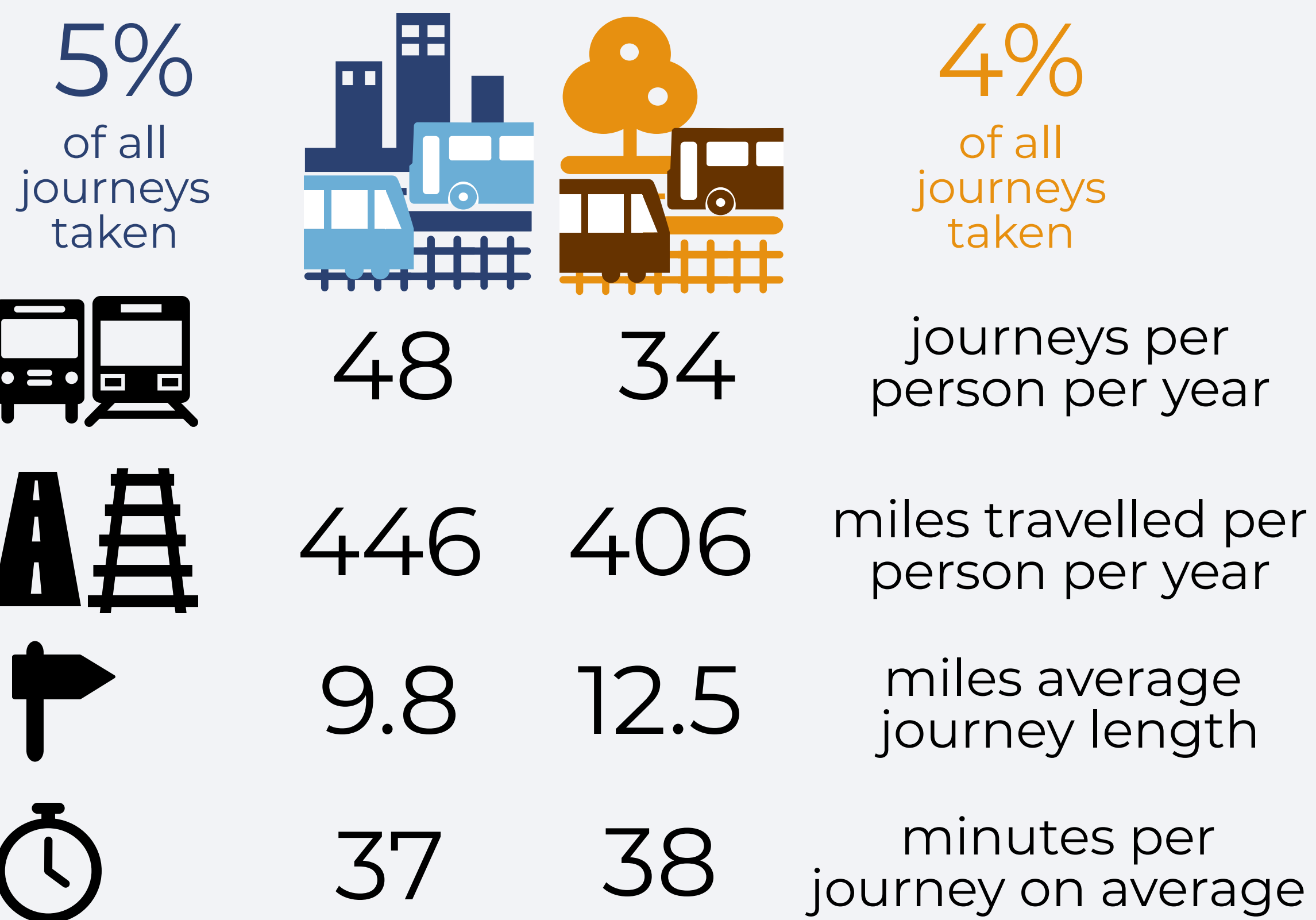
17%



Purpose of public transport journeys



Key urban-rural public transport facts*



*Urban-rural information is based on the areas where the respondents live

Public transport in the TSNI

A public transport journey in the TSNI is one where public transport is the main mode in terms of distance. Public transport includes travel by Ulsterbus, Citybus/Metro, Other Bus, Northern Ireland Railways and Black Taxi. However, for questions marked with a "+", the term "public transport" is simply used in the survey question and is left to the respondents' interpretation. Distance figures include public transport journeys made as part of any journey. Further definitions can be found in the In-depth report, available at the link below.

About this factsheet

Results in this factsheet refer to 2014-2016. The 2015-2017 headline report was published in July 2018. This factsheet will be updated once the in-depth results are released in January 2019.



Public transport in Northern Ireland



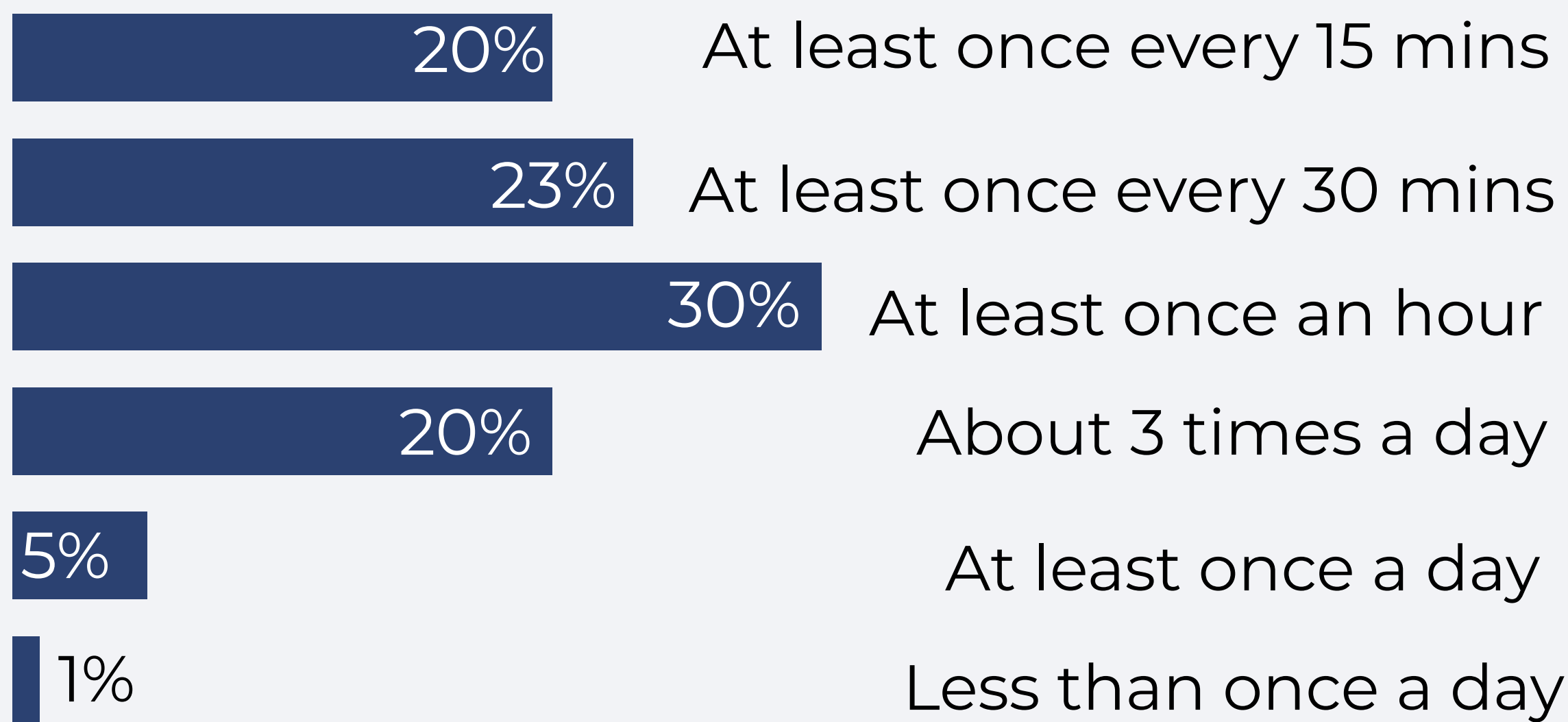
🏠 % of households

👤 % of individual respondents

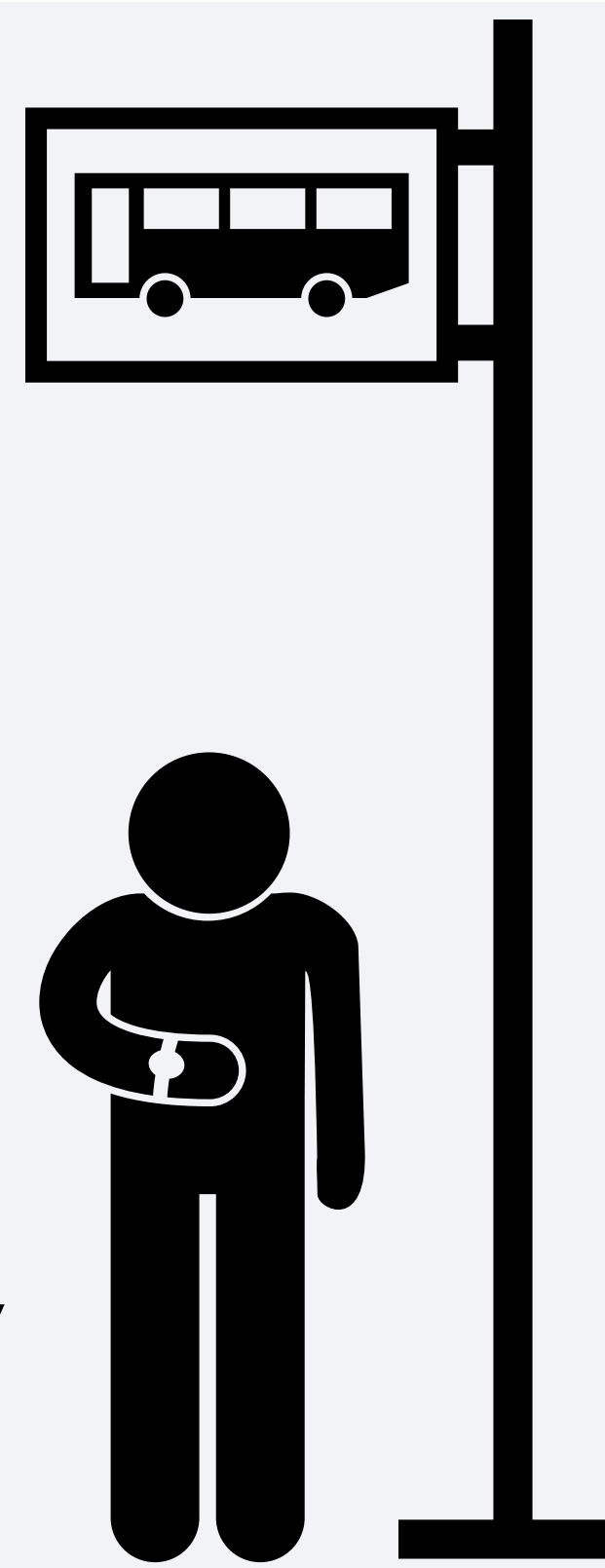
Note: "Don't know" responses are excluded from the analysis except where otherwise stated

Access to bus services

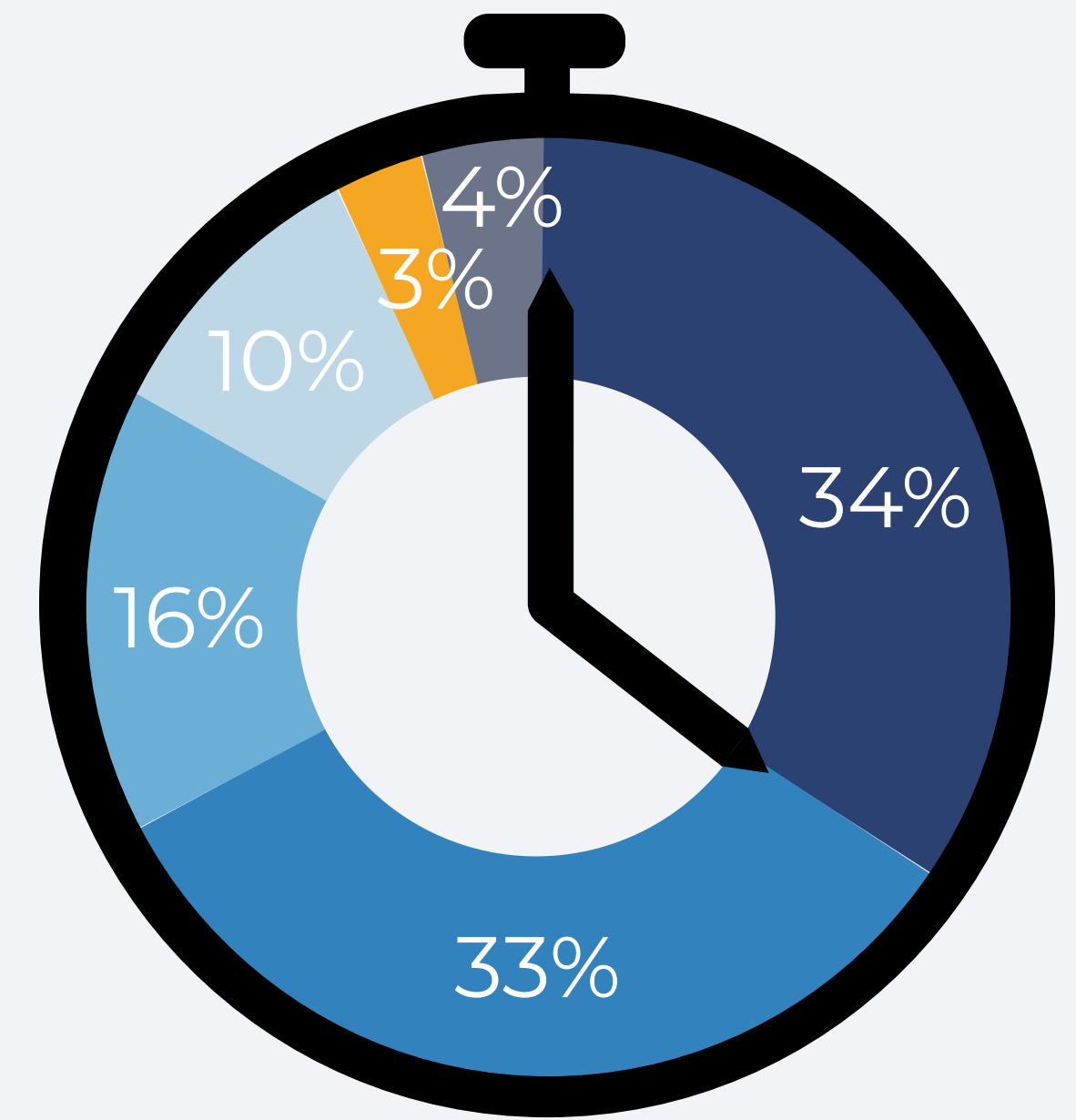
🏠 Bus service frequency



29% of households said they did not know how often they could get a bus

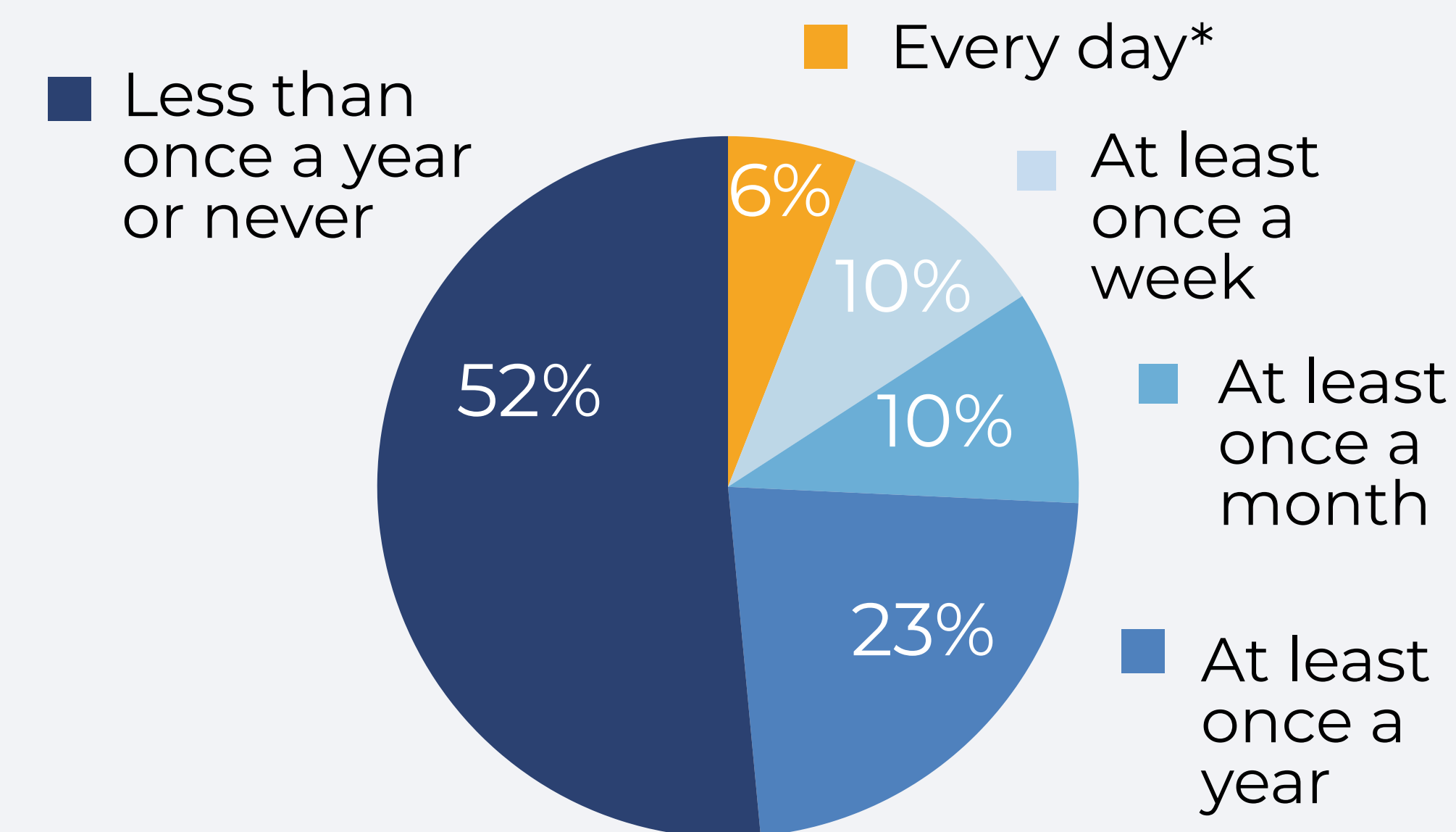


🏠 Time taken to walk to nearest bus stop



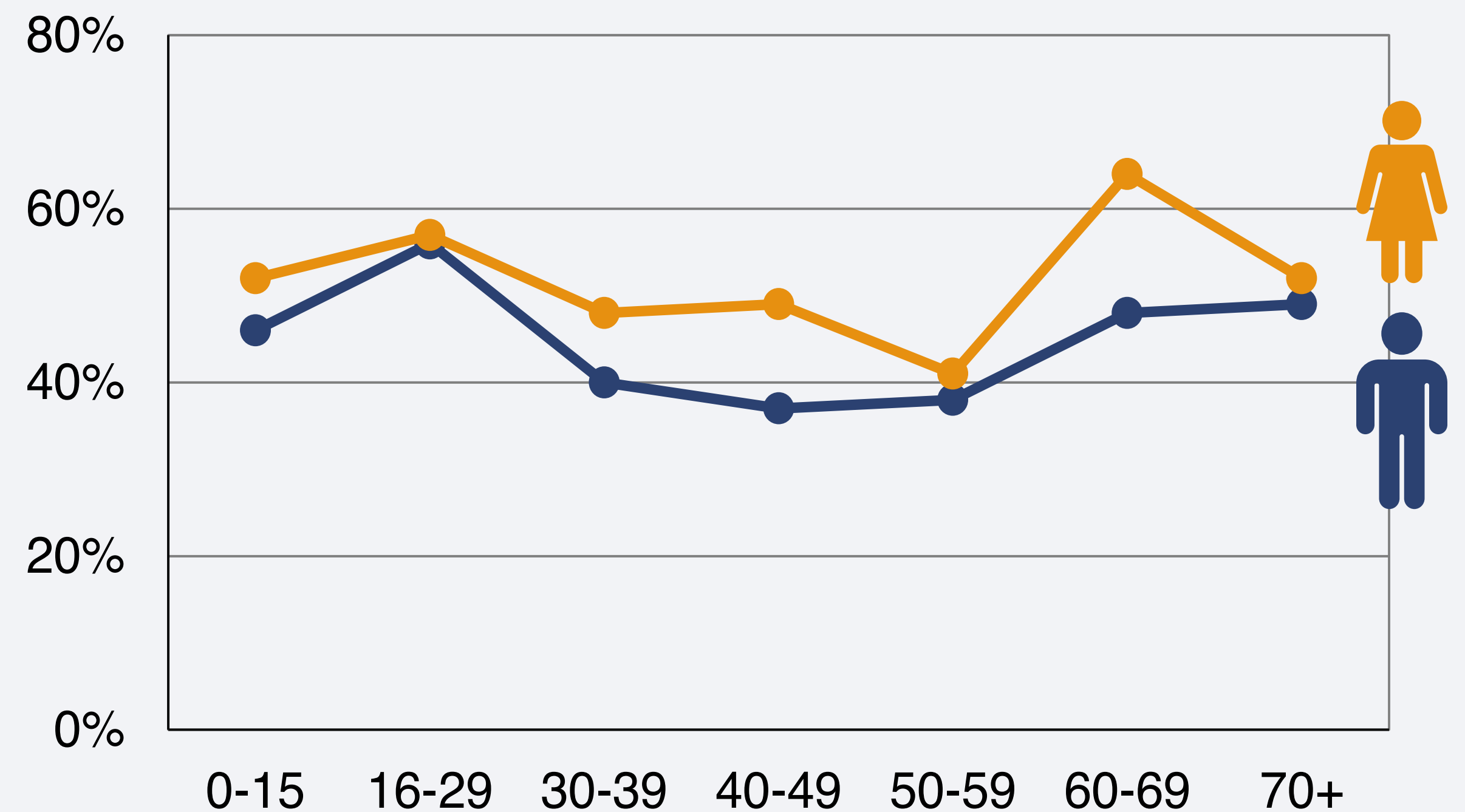
3 mins or less
4-6 mins
7-13 mins
14-26 mins
27-43 mins
44 mins +

👤 Frequency of bus use



*Includes travelling by bus every working/school day but not weekends

👤 % who travelled on a bus at least once a year by age and sex



Key urban-rural facts for bus travel*

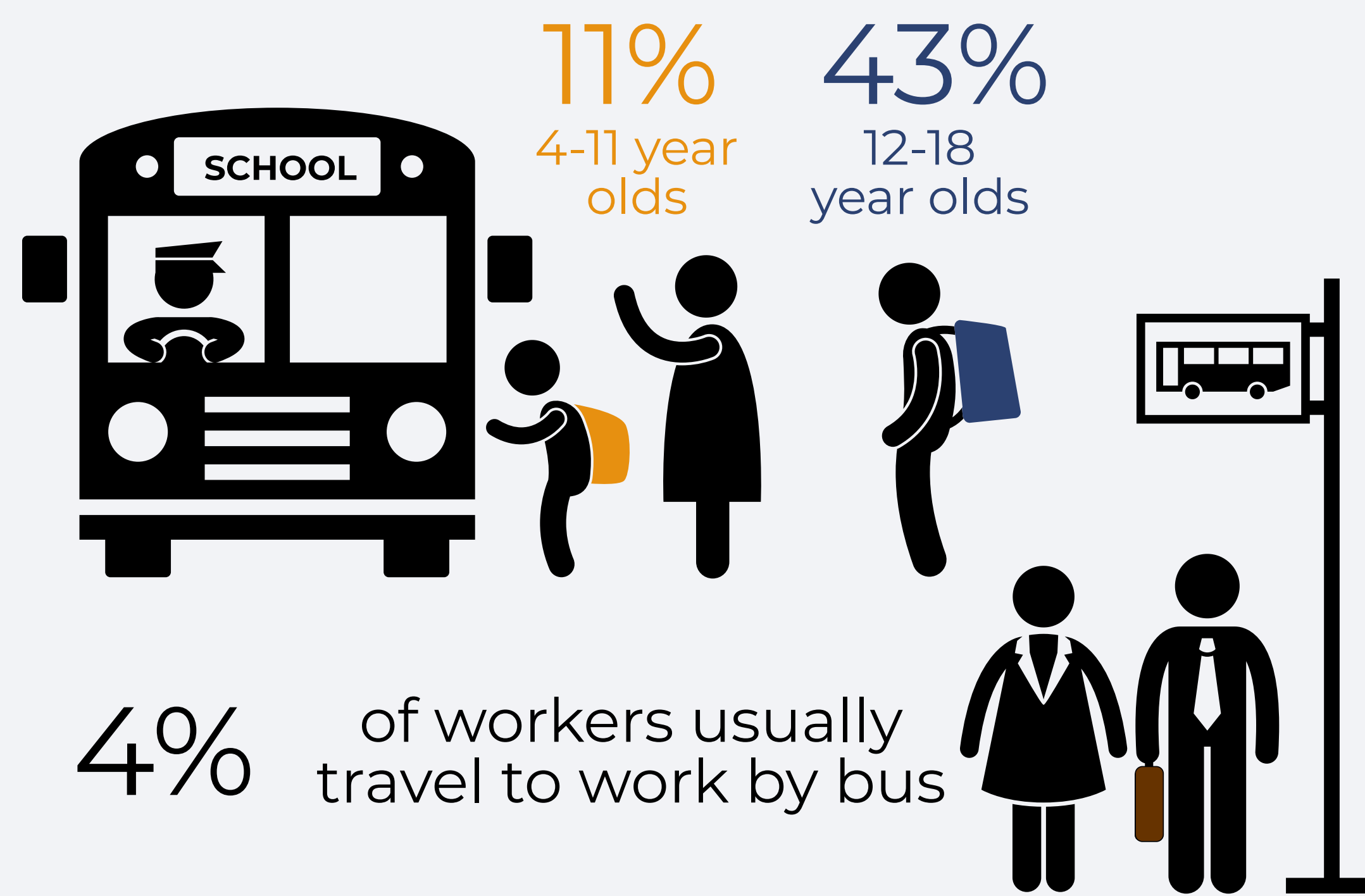


🏠	80%	45%	Nearest bus stop is within a 6 minute walk
🏠	90%	36%	Bus frequency is at least once an hour**
👤	55%	38%	% who travelled on a bus at least once a year

*Urban-rural information is based on the areas where the respondents live

Bus travel to school and work

% of school journeys which were by bus



For further information:



ASRB@infrastructure-ni.gov.uk

<https://www.infrastructure-ni.gov.uk/articles/travel-survey-northern-ireland>



Public transport in Northern Ireland



🏠 % of households

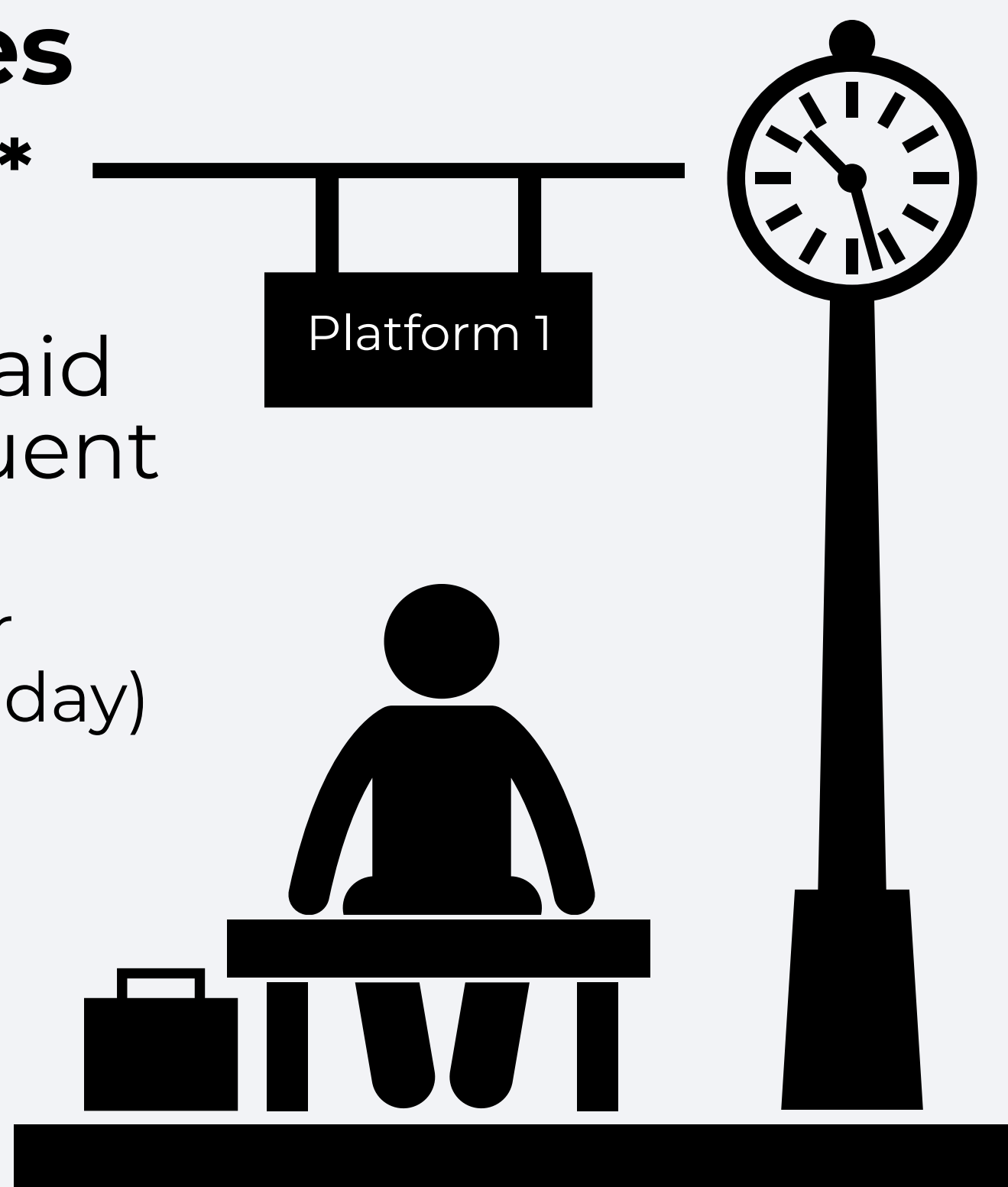
👤 % of individual respondents

Note: "Don't know" and "Not applicable" responses are excluded from the analysis except where otherwise stated

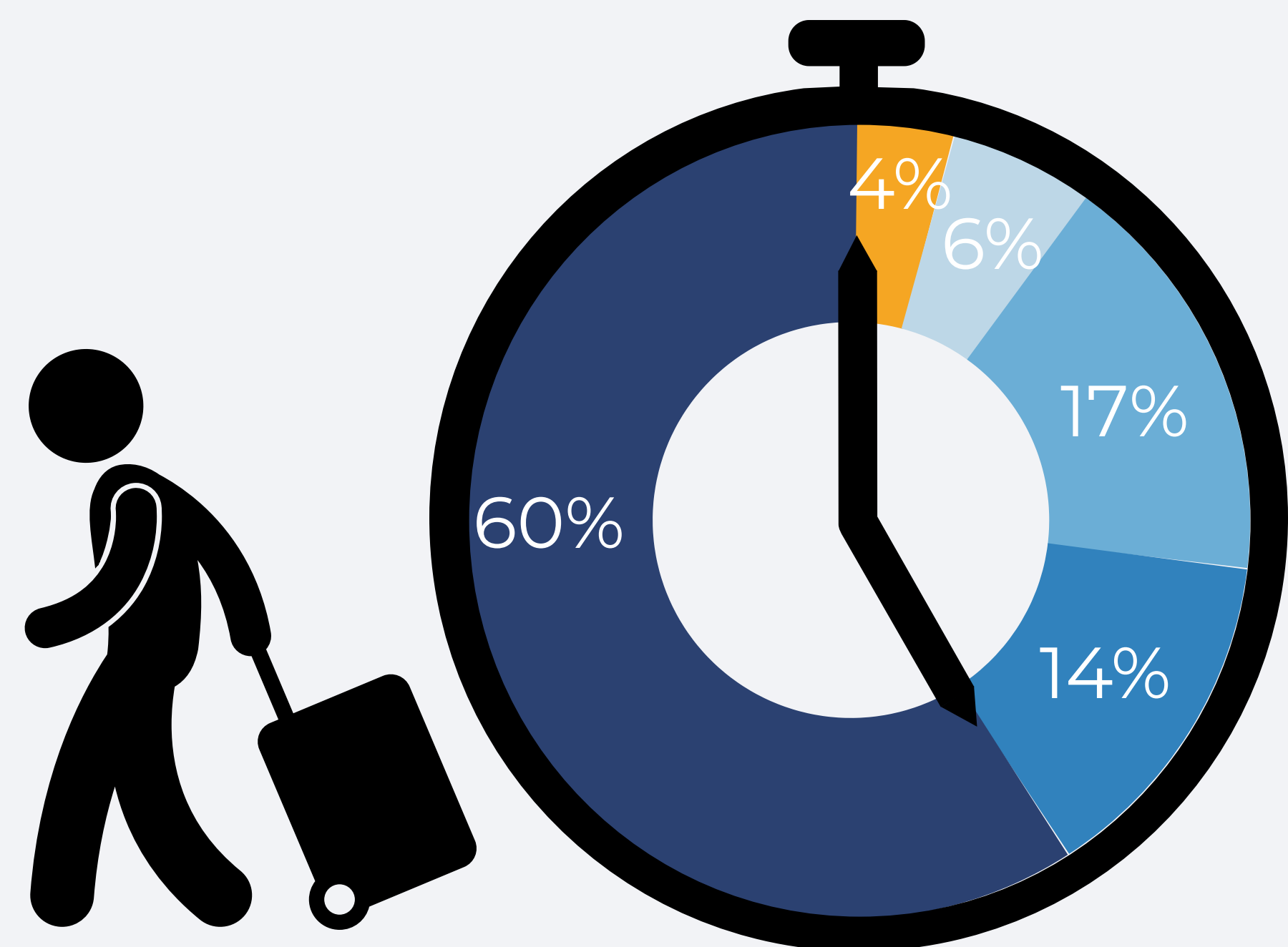
Access to rail services

🏠 Rail service frequency*

96% of households said there was a frequent rail service (at least once per hour throughout the day)



🏠 Time taken to walk to nearest NI Railways station

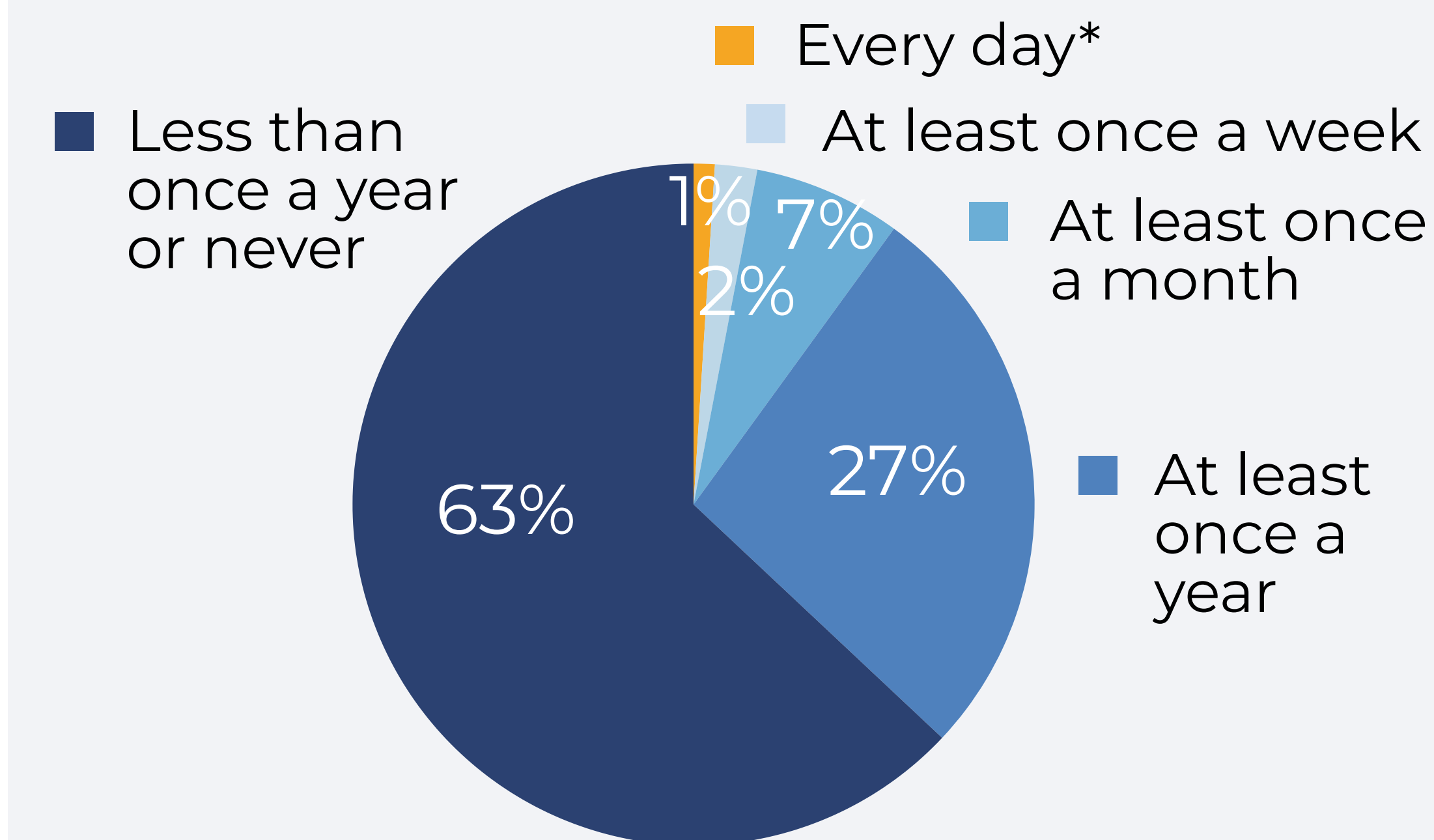


*Question asked if households did not state "Not applicable" to time taken to walk to nearest station question



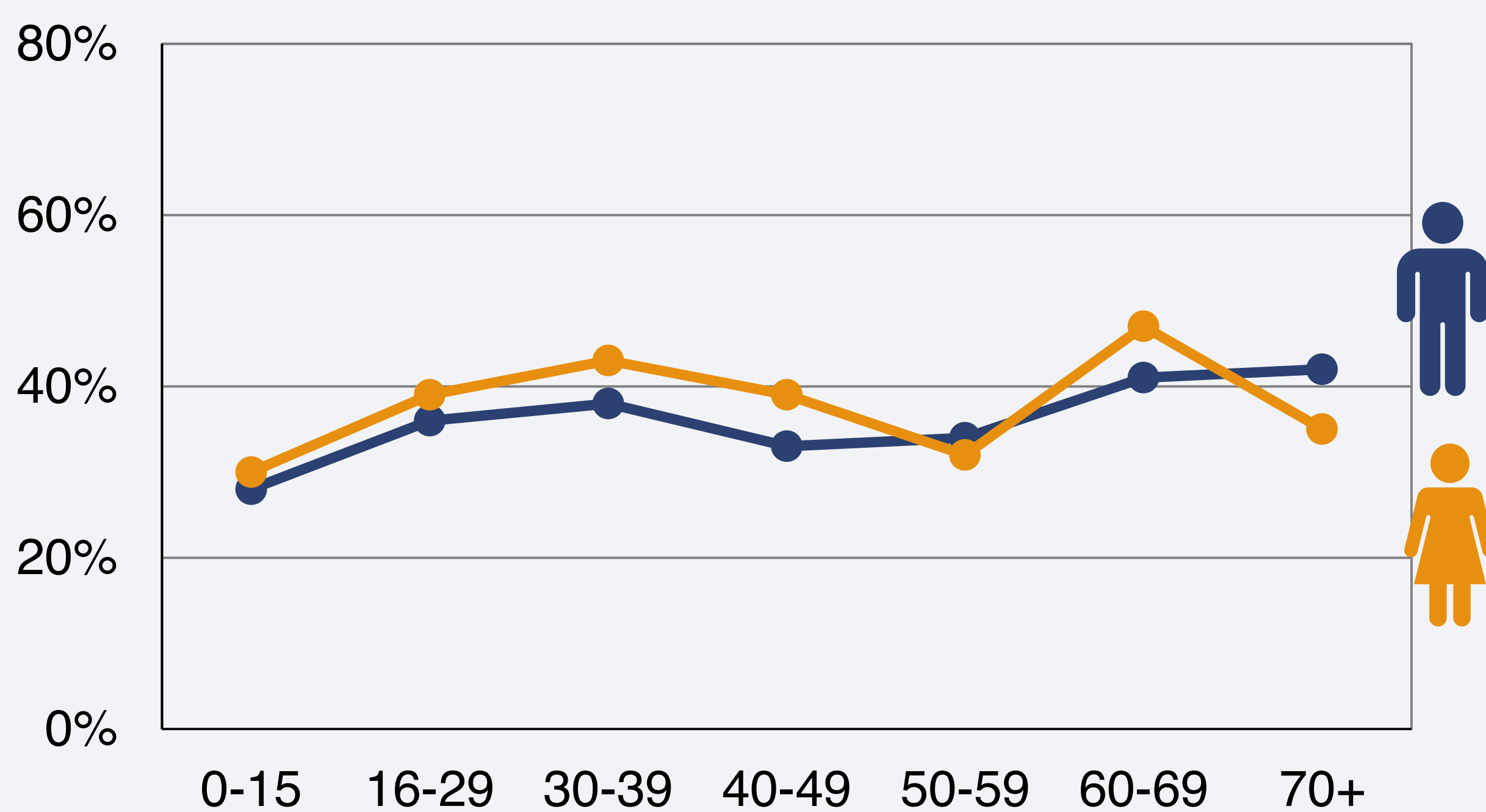
16% of households said they did not know how often they could get a train

👤 Frequency of train use



*Includes travelling by train every working/school day but not weekends

👤 % who had travelled on a train at least once a year by age and sex



Key urban-rural facts for rail travel*



🏠 39% 5%

Nearest train station is within a 26 minute walk

🏠 97% 95%

Rail service frequency is at least once an hour throughout the day

👤 42% 29%

% who travelled on a train at least once a year

*Urban-rural information is based on the areas where the respondents live

Travelling to work by train

2%

of workers usually travel to work by train



Acknowledgements

The access to bus and rail services and bus journeys to school and work icons were created by Gan Khoon Lay from the Noun Project.

For further information:



ASRB@infrastructure-ni.gov.uk

<https://www.infrastructure-ni.gov.uk/articles/travel-survey-northern-ireland>

