

TransportNI

Southern Division 2015

ANNUAL REPORT To Armagh City, Banbridge and Craigavon Borough Council



CONTENTS	PAGE
FOREWORD BY THE DIVISIONAL MANAGER	3
1.0 INTRODUCTION	4
2.0 STRATEGIC ROUTE IMPROVEMENT	
2.1 New Works	16
2.2 Maintenance of Structures	18
3.0 TRAFFIC AND NETWORK DEVELOPMENT	
3.1 Minor Works	23
3.2 Collision Remedial	30
3.3 Traffic Calming	32
3.4 Traffic Management	33
3.5 Pedestrian Measures	35
3.6 Safer Routes to School	38
3.7 Cycling Measures	39
3.8 Legislation	40
4.0 NETWORK MAINTENANCE	
4.1 Carriageway Resurfacing Schemes 2014/15	
Asphalt Resurfacing	41
Bitumen Macadam	49
Surface Dressing	53
Other Surface Treatments	54
4.2 Carriageway Resurfacing Schemes 2015/16 Programme	
Asphalt Resurfacing	54
Bitumen Macadam	55
Surface Dressing	56
4.3 Footway Reconstruction	58
4.4 Drainage Maintenance	60
4.5 Routine Maintenance	62
4.6 Utility Works	63
5.0 STREET LIGHTING	
5.1 Maintenance	65
5.2 St Lighting on Private Developments	65
5.3 Lighting Schemes complete or under way 2015	65
5.4 Schemes planned for 2015/16	66
5.5 LED	67
6.0 NETWORK PLANNING	
6.1 Development Control Planning Applications	69
6.2 Development Control Roads (NI) Order 1993	70
6.3 Private Streets: Adoptions	70
6.4 Private Streets: Enforcement	72
6.5 Private Streets: Property Certificates	74
6.6 Abandonments	74

FOREWORD BY THE DIVISIONAL MANAGER



Lord Mayor, Aldermen and Councillors

I am pleased to present my first report to the new Armagh City, Banbridge and Craigavon Borough Council. Within the report you will find details of last year's activities and an outline of the work we propose to undertake in the council area during the current financial year.

I have also taken the opportunity to include some information on how we work to manage, maintain and improve the road network in Southern Division.

Over the last year TransportNI has taken significant steps to implement internal organisational changes to align closely with the new councils. As a result our Southern Division has grown and now serves the three new councils of:

- Armagh City, Banbridge and Craigavon Borough Council
- Ards and North Down Borough Council
- Newry, Mourne and Down District Council

There are significant changes for both the Council and TransportNI which will require co-operation and careful planning on both our parts. I look forward to working with Councillors and Council officials under the new council arrangements.

I welcome the advice, help and co-operation which we receive from local Councillors and Council officials and I look forward to receiving your views when we meet at our formal meeting.

SIMON RICHARDSON
Divisional Manager

INTRODUCTION

Transport NI Southern Division is one of 4 Client Divisions across Northern Ireland and our headquarters is based in Marlborough House, Craigavon

Client Divisions represent the public face of Transport NI and take overall responsibility for all that occurs on the road network. We also have separate Consultant (Design and Consultancy Services) and Contractor (Operation and Maintenance) Units which have their Headquarters in Downpatrick and Ballymena respectively. They provide Divisions with expert Design, Contract Procurement and Contractor facilities.

TransportNI Headquarters is in Clarence Court, Belfast. Figure 1 below details the high level organisational structure

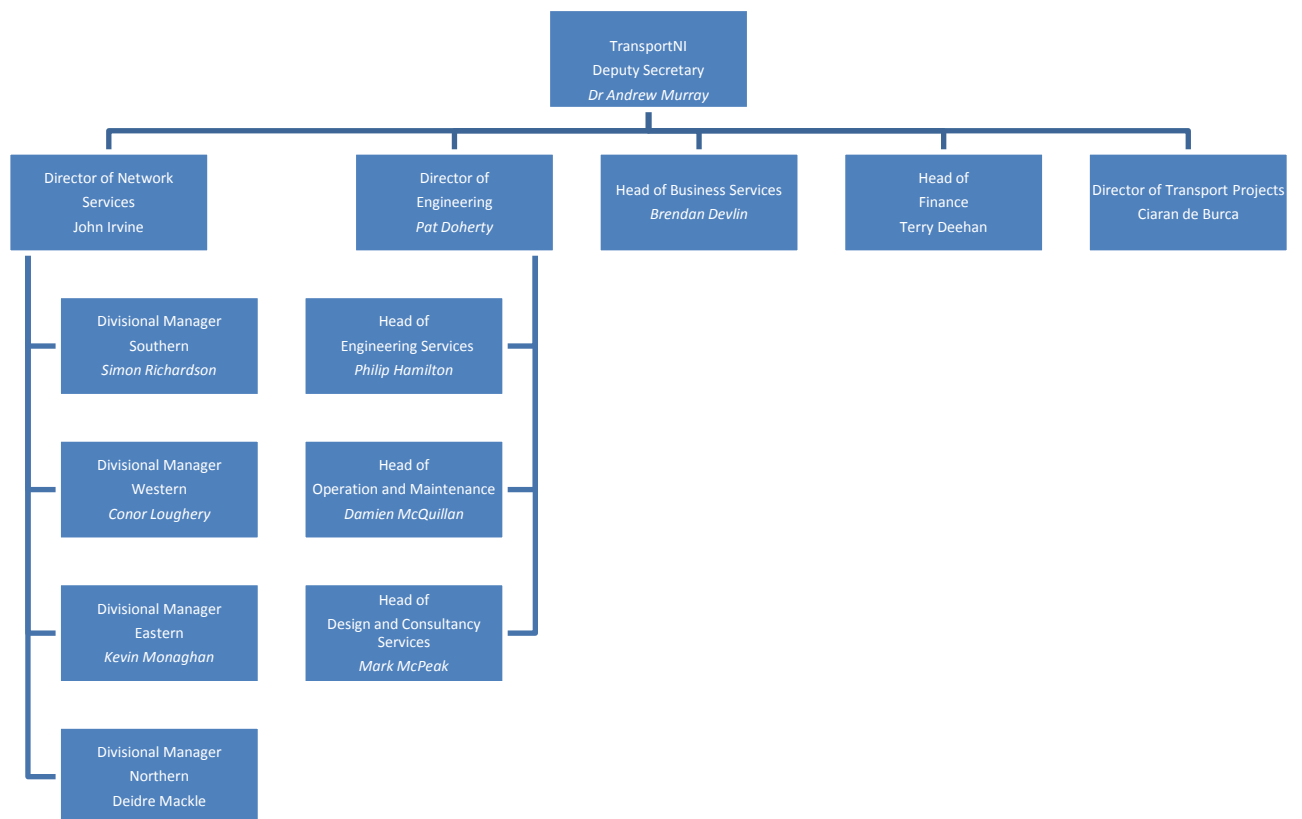
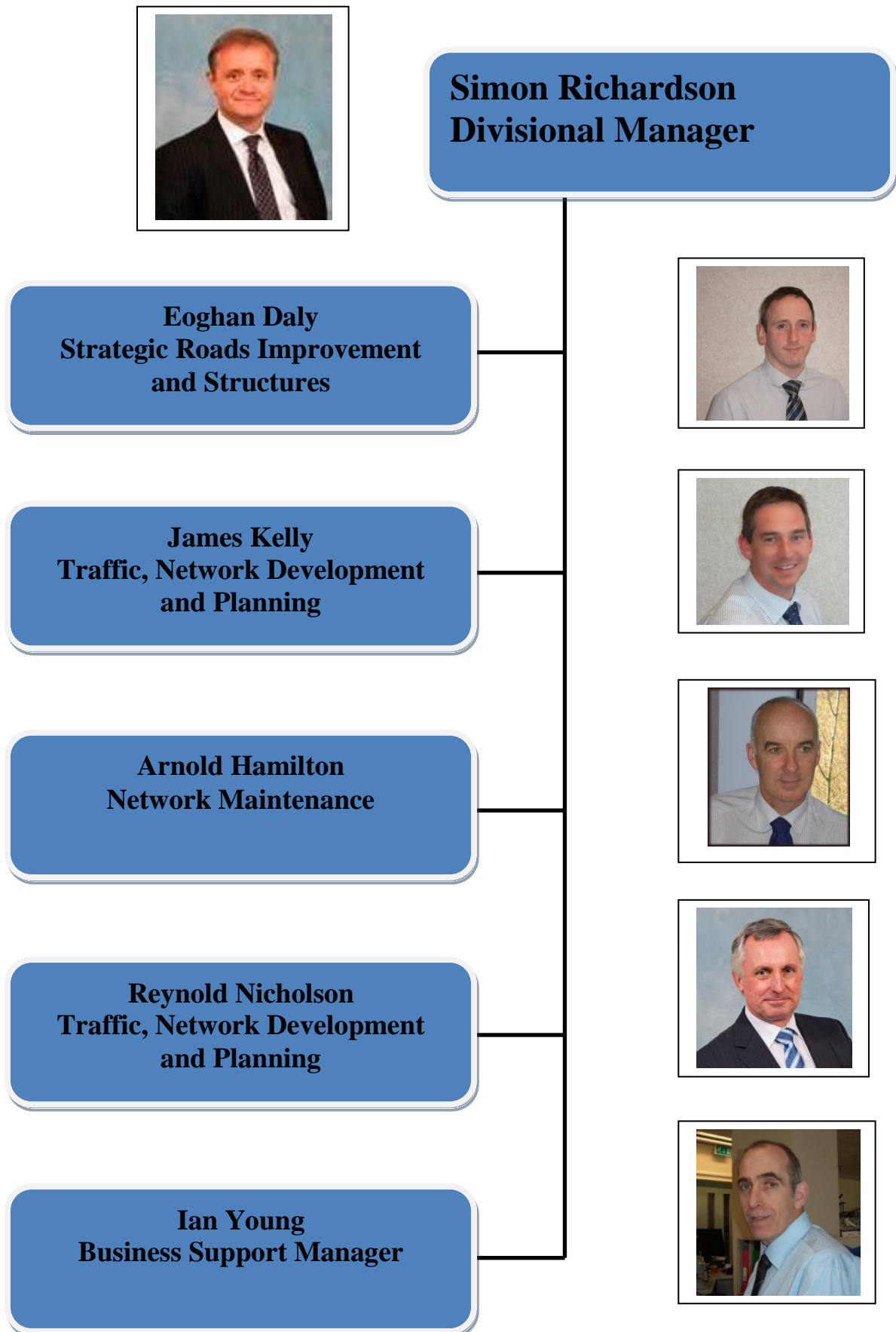
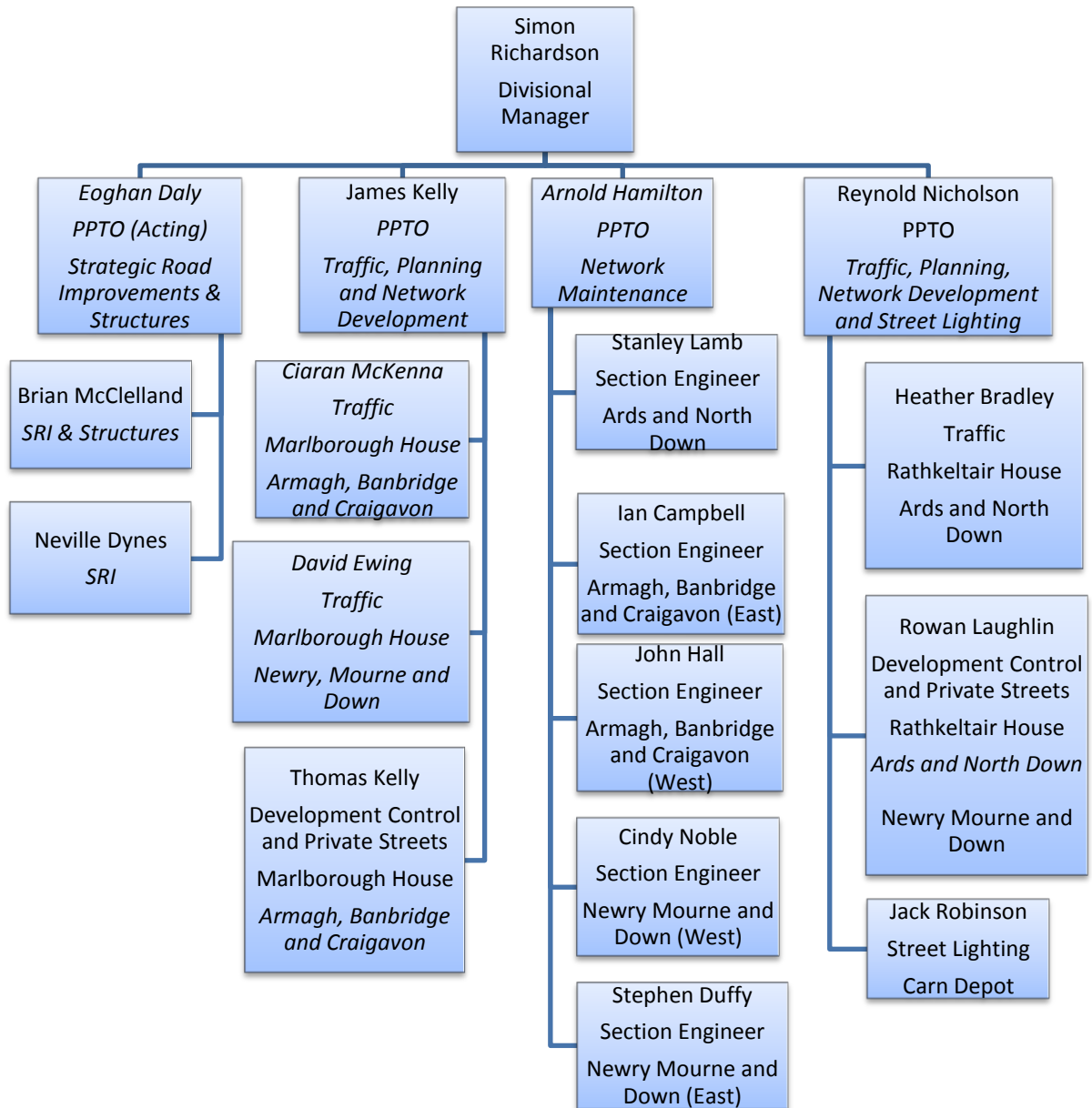


Figure 1 – Transport NI Management Team

Southern Division Management Team



Southern Division Organisational Structure



SOUTHERN DIVISION consists of the 3 Council Areas of Armagh City, Banbridge and Craigavon, Ards and North Down, Newry, Mourne and Down.

Our Headquarters is based at Marlborough House, Craigavon, but we also have local Maintenance Offices in each of the Council Areas.

Our Traffic Management, Development Control and Forward Planning staff are located in Marlborough House, Craigavon and Rathkeltair House, Downpatrick, and are detailed in the Southern Division organisational structure on page 6. Our Street Lighting Headquarters for the 3 Council Areas is based at the Carn Section, in Portadown.

Our internal Contractor, Transport NI Operation and Maintenance, is centred in Ballymena with staff based at various locations within Southern Division. They carry out a wide range of activities for us, from patching roads to gully cleaning and drainage as well as responding to emergency calls and treating the road network for ice and snow when required.

Our internal Consultancy, Design and Consultancy Services is based in Downpatrick and it manages our engineering activity such as design and contract supervision.

WHAT WE DO?

Our key roles centre around Maintaining, Managing and Improving the Road Network.

Maintaining the Road Network

Maintaining the network in a safe and serviceable condition remains one of our highest priorities. Maintenance includes a wide range of activities from major reconstruction and resurfacing of road surfaces to the everyday upkeep of the network, such as grass cutting, cleaning gullies, repairing or cleaning road signs and timely salting of roads in preparation for winter conditions. These activities aim to ensure user safety and minimise the potential for more expensive maintenance at a later stage. Maintaining the vast network of electrical equipment is also extremely important to us (especially street lights) as well as a considerable number of retaining walls, bridges and other structures.



Asphalt resurfacing being carried out within the Division

Managing the Road Network

We manage the road network to promote its safety and efficient operation.

We have continued to make use of the latest technology and traffic management techniques to improve road safety, provide facilities for all road users, and effectively manage the network.

In an effort to improve road safety, we have an annual programme to implement traffic calming measures to lower traffic speed and improve driver behaviour and discipline.

We provide school safety zones to improve road safety in the vicinity of schools.

We also promote sustainable travel modes and install new and improve footways, cycle ways and facilities.

Effective management of the road network relies upon the efficient operation of Intelligent Transport Systems (ITS) which can include facilities ranging from traffic signals, variable message signs and travel information to very sophisticated traffic control systems for the urban and motorway networks.

Our facilities to monitor traffic flow and provide on trip information to drivers have increased through the addition of more CCTV cameras and roadside variable message signs. Our main sources of pre-trip information are the trafficwatch website, www.trafficwatchni.com, radio broadcasts and our traffic information telephone line 08457123321.

Improving the Road Network

To support the Government's objective to ensure that our roads are of a standard capable of producing reduced and more reliable journey times we will promote a programme of increased investment to improve the strategic road network, giving priority to the key transport corridors.

Within Southern Division work on schemes is programmed in line with the 10 year Investment Strategy for Northern Ireland (ISNI) which was endorsed by the Assembly in January 2008.

Road safety is paramount in all we do and we will continue to implement a programme of safety engineering measures, consisting of collision remedial schemes and traffic calming. We will also implement a programme of Safer Routes to Schools combining engineering measures with education and awareness.

We will continue to improve the local road network by implementing a number of minor works schemes, by improving the extent of our street lighting and by strengthening our bridges to modern day standards.

TRANSPORT NI FUNCTIONS

Winter Service

The aim of winter service is to help, as far as possible, main road traffic to move safely and freely in wintry conditions by spreading salt at the most effective times. It is vital that we cover as much traffic as possible for the available budget and criteria have been devised to identify the roads that would provide the best cost benefits.

Within Southern Division, a fleet of 33 gritters and over 70 personnel were available to salt approximately 1760 km of main roads. We aim to complete this in just over 3 hours which is an immense logistical exercise. There were approximately 98 call-outs this year, using around 18,000 tonnes of salt, at a cost of just under £20,000 per call-out to treat all roads on the salting schedule.



A Snow Blower in operation within Southern Division.

Because of the high costs involved, it is essential that our engineers take informed decisions and they are assisted in this task by the very latest technology. There are currently 21 Transport NI maintained weather stations across Northern Ireland with an additional 4 stations maintained by the DBFO companies, and with further data provided from 10 sites in Southern Ireland.

Information on our salting activities continues to be relayed electronically to the broadcast media to ensure that the latest news on road conditions is available to motorists across Northern Ireland. Additional information, including our winter

service leaflet, can be found on our website along with advice on driving in poor weather conditions.

Development Control and Private Streets

We contribute to the Planning (NI) Order 1991 town and country planning process with the provision of transportation and roads related advice to DOE Planning and the Armagh, Banbridge and Craigavon Council Planning Office.

New housing developments that have been ‘determined’ and which will eventually be adopted and maintained must be built to a standard acceptable to the Department. We supervise the construction of these streets at various stages to ensure they meet the required standard.

We also work closely with the Council Planning Office on its Development Plans which are the basis against which future development applications are considered.

Car Parking

On the 1 April this year Transport NI transferred 48 car parks to Armagh, Banbridge and Craigavon Council. Transport NI and the Council are working together to provide a suitable enforcement service over the next 18 months when Council will then decide on future enforcement arrangements.

In all of our towns and cities, parking restrictions are in place to manage traffic, to reduce congestion and to improve road safety. We work in partnership with our service provider, NSL, to enforce parking restrictions and ensure compliance with on and off-street parking regulations.

Emergency Response Service

We have procedures in place to assist with roads related emergency incidents ensuring a (24/7) response, 24 hours a day, 7 days a week. We are also committed to co-operating with and assisting the blue light services and other statutory agencies, as far as practical, to ensure that quick and appropriate responses are made to incidents.

Our emergency response procedures are supported by a well established reporting system to gather operational information from across Northern Ireland during an emergency. These arrangements feature a Roads Incident Desk that

assesses new and follow-up incident reports received across Northern Ireland and forwards them to the Press Office, Private Office and Senior Managers. A lead communicator is available out of hours all year around to ensure that the latest news on road conditions is available to the travelling public.

Street Works

The Northern Ireland road network is a major public asset and is valued at over £32 billion, below which runs a complicated network of pipes and cables. This underground apparatus delivers key services to the public including water supply, waste water disposal, electricity, gas and telecommunications. For that reason Parliament has given utility companies the right to open the public road to place or maintain their equipment.

Transport NI works closely with utility companies through the Northern Ireland Road Authority and Utilities Committee to minimise disruption caused by street works and ensure better quality reinstatements through co-operation and co-ordination and through implementation of agreed codes of practice.

Bridge Strengthening

Each year, we have a significant program to strengthen our bridges. This includes repairs to rectify damage to bridges caused by severe weather conditions.

Street Lighting

We provide and maintain street lighting on all adopted thoroughfares within urban and rural roads.

To reduce light pollution and improve energy conservation, we have specified modern efficient lanterns for all our new and upgrading schemes. We have also focused on the selection of appropriate lighting design levels for new schemes and have conducted a number of energy conservation trials including replacing existing luminaries with luminaries of lower wattage output and improved optical performance.

Local Transport and Safety Measures

Each year we implement a range of measures to improve the safety and efficiency of the road network. Schemes included:-

- Collision Remedial measures at specific sites;
- Traffic Calming measures;
- Provision of new footways and other improvements for pedestrians;
- Provision of new cycle lanes;
- School Safety Zones;
- Controlled Pedestrian Crossings;
- Traffic Management measures; and
- The use of Intelligent Transport Systems to provide traffic control and travel information to road users

We also undertake a number of Minor Road Improvements which include junction improvements and general carriageway realignment.

Our Customers

We provide a quality customer service by:-

- Supplying up-to-date information through our publications, our website www.drdni.gov.uk and at various shows and exhibitions;
- Listening to customer needs; and
- Remaining open, transparent and visible at all times

We publish a wide range of information leaflets on specific road schemes and, generally, on the services we provide. Our free newspaper, “On the Move”, is published twice a year and distributed through our local offices, selected petrol stations and public libraries. We provide up-to-date travel news through our travel information website www.trafficwatchni.com and our travel hotline on 08457 123321. The information is updated at 10 minute intervals and broadcast on BBC Radio Ulster during peak times.

During the development phase of major roads projects, we consult with a wider range of stakeholders, including elected representatives and the public and particularly those likely to be directly affected by the works. We hold exhibitions at local venues and inform the public through press articles, leaflet drops and individual visits as necessary.

2.0 STRATEGIC ROUTE IMPROVEMENTS & STRUCTURES

Principal Engineer- **Eoghan Daly (0300 200 7892)**
TransportNI.Southern@drdni.gov.uk



Eoghan is supported by the following staff:

Brian McClelland TransportNI.Southern@drdni.gov.uk

**Marlborough House, Central Way
(0300 200 7892)**

Responsibilities include:

- A28 Armagh East Link;
- A3 Armagh North & West Link;
- A1 Junctions Phase 2 and,
- Structures in Southern Division.



Neville Dynes TransportNI.Southern@drdni.gov.uk

**Marlborough House, Central Way
(0300 200 7892)**

Responsibilities include:

- A24 Ballynahinch Bypass,
- A99 Extension to Millennium Way and;
- Newry Southern Relief Road.



2.1 NEW WORKS

Schemes planned for 2016/17 and onwards

<i>SCHEME DESCRIPTION</i>
<p>A3 Armagh North and West Link Road</p> <p>Consideration of options for a preferred line and junction strategy based on the ‘out of town’ corridor is continuing.</p> <p>It would not be appropriate to make a decision on the preferred route at this time, pending development of the Masterplan for the Mullinure Area being progressed by Armagh City and District Council prior to the reorganisation of the local councils.</p>
<p>A28 Armagh East Link</p> <p>Following a Public Information event held in June 2014 for the A28 Armagh East Link, it was considered appropriate to carry out a review of the Preferred Corridor for the proposal.</p> <p>To inform this review, traffic and environmental surveys have been undertaken through the study area.</p> <p>The review, which is expected to be completed in the coming months, includes consideration of the preferred corridor emerging further out the Markethill Road at the Edenaveys Industrial Estate area.</p>
<p>Delivery of each of these schemes remains subject to clearing the statutory procedures, having satisfactory economic appraisals and the availability of funding in future budget settlements.</p>
<p>A99 Extension to Millennium Way, Lurgan</p> <p>Scheme development work is continuing on the Millennium Way Extension which will provide a link from Malcolm Road to Gilford Road. The Notice of Making of the Vesting Order for the proposal was published week commencing 23 March 2015 and the Vesting Order became operative on 28 April 2015.</p> <p>The scheme involves the construction of 430 metres of new road between Malcolm Road and Gilford Road and upgrading of the existing junctions of Millennium Way with Malcolm Road and Gilford Road/Banbridge Road.</p> <p>The new road, which also accommodates cyclists and pedestrians, will reduce congestion within the area and traffic flows through the local residential areas.</p>

SCHEME DESCRIPTION

A99 Extension to Millennium Way, Lurgan (Cont'd)

Significant works in advance of the main construction contract are required including; securing vacant possession of the buildings that will require to be demolished and diversion of utilities at the Banbridge Road/Gilford Road roundabout. Work is also ongoing to prepare the proposal for procurement.

It is important to point out that construction of the proposal remains subject to funding being made available in future budget settlements.

A1 Junctions – Phase 2

A Public Information Event was held in November 2013 at which options for each flyover type junction were displayed for each of the following locations:

- Gowdystown Road (south of Dromore),
- Skeltons Road (between Dromore and Banbridge),
- Waringsford Road (north of Banbridge) area, and
- Listullycurran Road/Backnamullagh Road (between Dromore and Hillsborough) just north of the Banbridge district council boundary

A single option for the Northbound on-slip at Castlewellan Road and a link between the existing underpass junction at Hillsborough Road, Dromore and Milebush Road (Milebush Link) were also displayed. The event also highlighted a number of minor road junctions with the A1 that were being considered for closure.

The proposed junction improvements would facilitate the provision of a continuous central safety barrier, closing up all of the gaps in the central reservation between Hillsborough and Loughbrickland.

Extensive feedback received at the public information event held in November 2013 and over the following months was considered along with engineering and other assessments the proposals have been reviewed. As a result, significantly fewer closures of minor road junctions with the A1 are being proposed than previously indicated. They will now remain open for left-in and left-out access.

Delivery of this scheme remains subject to it clearing the statutory procedures, having a satisfactory economic appraisal and is dependent on future funding levels, including the funding level.

2.2 MAINTENANCE OF STRUCTURES

Structures Strengthening Schemes Completed 2014 / 2015

Structures Strengthening

Highway Structures include bridges, sign gantries and retaining walls. All bridges must be capable of carrying 40 tonne vehicles and this requirement has led to the ongoing assessment of bridges in the area.

B134 Mowhan Bridge, Markethill

Bridge No:40510

Complete Deck Replacement.



Works at the site to replace the bridge decking.



Concrete deck after pour



The rear of the East pier



View from the West pier – Bridge complete

Structures Strengthening

C194 Hanslough Road, Middletown

Bridge No 41887

Rebuild Northern parapet



The parapet under re-construction



A view of the cut water during re-construction



The parapet at the completion of works



The cut water after re-facing works

Other Strengthening schemes completed within 2014-15 –

Bridge No.	Name	Area
40660	Ballymacully Bridge	Armagh
40674	Keady Road Bridge	Armagh
40851	Kilmahugh Road, Markethill	Armagh
41569	Dukes Bridge, Vicarage Road, Portadown	Armagh
40504	Cusher Road, Markethill	Armagh
42058	Ballynacappoe Road, Banbridge	Banbridge
41436	Corbally Road (Shanrod), Banbridge	Banbridge
41337	Connollys Bridge, Kilntown Road, Dromore	Banbridge
40904	Seagoe / Kernan Flyover, Portadown – Site Investigations	Craigavon

Structures Maintenance Schemes Completed 2014 / 2015

Structures Maintenance

A3, Portadown Road, Armagh - culvert replacement	Armagh
Castlewellan Road, repairs to retaining wall	Banbridge
Ann Street, Gilford – repairs to Retaining wall	Banbridge

Schemes under construction and planned for completion in 2015/2016

Structures Strengthening

U8213: Ballynagalliagh Bridge, Tassagh

Bridge No:40742

Complete Bridge Replacement – scheme completed May 2015.



Lifting in of an edge beam



View of completed Bridge

Other Strengthening schemes to be undertaken within 2015-16

Bridge No.	Name	Area
40904	Seagoe/Kernan Flyovers Parapet replacements	Craigavon
41286	Annvale Road (Corkley) Bridge	Armagh
41061	Foley Road Bridge, Seagahan	Armagh
41078	Tassagh Lower Bridge	Armagh
41465	Derrylough Hill Bridge (Corbet) Rathfriland	Banbridge
41001	Rathfriland Road Bridge (Finnis)	Banbridge
40421	Metal Bridge, Mowhan	Armagh

All other bridges are inspected routinely. This generates an ongoing programme of repairs to bridges and other structures.

Vehicle Restraint Systems

A50 Banbridge Road near Castlewellan

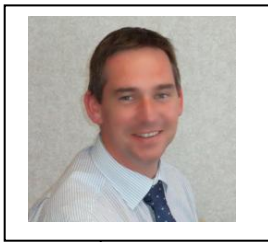
New Vehicle Restraint System installed.



Other VRS Schemes	Area
Gosford Road, Armagh	Armagh
Brownlow safety fence, Craigavon	Craigavon
Lake Road, Craigavon	Craigavon
Tarsans Lane, Craigavon	Craigavon
Derrymacash, Craigavon	Craigavon
A3, Brownstown flyover & Slip Roads, Northway, Portadown	Craigavon
A3, VRS at Sign Gantry, Northway, Portadown	Craigavon
Eastway Road, Craigavon (ongoing at May 2015)	Craigavon
Ballymagin Road, Craigavon	Craigavon

3.0 TRAFFIC and NETWORK DEVELOPMENT

Principal Engineer- James Kelly (0300 200 7892) traffic.southern@drdni.gov.uk



James is supported by the following staff:

Ciaran McKenna (0300 200 7892) traffic.southern@drdni.gov.uk

**Section Engineer for
Traffic Management (Marlborough House)**

This team is responsible for
Traffic matters.



Gary McCracken (0300 200 7892) traffic.southern@drdni.gov.uk

Assistant Engineer
with responsibility for
Traffic Signals
Safer Routes to School.



Seamus McCann (0300 200 7892) traffic.southern@drdni.gov.uk

Assistant Engineer
with responsibility for
Traffic Management
Transportation Projects
Car Parks and
Collision Remedial Schemes.



George Shilliday (0300 200 7892) traffic.southern@drdni.gov.uk

Assistant Engineer
with responsibility for
Traffic Management,
Transportation Projects
and Car Parks.



3.0 LOCAL TRANSPORT and SAFETY MEASURES

As part of our improvement programme, Southern Division plans to invest around £1.5 million this year in Local Transport and Safety Measures (LTSM) to improve road safety and encourage local transport use.

The LTSM programme includes:
Minor Works and Micro Schemes
Collision Remedial
Traffic Calming
Traffic Management
Pedestrian Measures
Cycle Measures
Safer Routes to School

3.1 MINOR WORKS

Schemes completed 2014/15

SCHEME DESCRIPTION

B111 Annareagh Road, Richhill

This scheme to provide localised widening of the carriageway together with the upgrading the existing footway on the B111 near the entrance to Brentwood Park was completed in September 2014.



The view prior to works at the junction



The junction at the completion of the works

A28 Gosford Road junction with Dinnahorra Road, Markethill

A scheme to provide a length of restraint barrier and ladder markings at the above junction was completed in the summer of 2014.



A section of the Ladder Markings

SCHEME DESCRIPTION

A3 Monaghan Road / Knockbane Road Junction, Middletown

A junction visibility improvement scheme has been completed at this location.



At the start of works



During the works to improve the visibility



Post scheme

A26 Tullyraine Road / Old Bann Road, Waringstown

A junction realignment and visibility improvement has recently been completed at this location



View of the restricted sightline



The new junction showing the improved sightline.

SCHEME DESCRIPTION

U4472 Gospel Lane, Banbridge

Work was completed on the provision of a new one way link road at Gospel Lane, Banbridge in November 2014. This link facilitates access from the town centre and provides new footways in keeping with the current public realm works and will aide traffic management and accessibility in the town centre.



View from Bridge Street



View from Rathfriland Street



A view of the final one way link road at Gospel Lane

Drumcree Road, Portadown

A new length of 35m of footway has been provided at this location in conjunction with a sightline improvement at Ballyoran Park.

SCHEME DESCRIPTION

B10 Grallagh Road, Rathfriland

A scheme to enhance junction visibility by reducing the crest height on the B10 and thus improving forward site distance at this location on the B10 Rathfriland Road has recently been completed.



Northway Widening

Work on this £1.3 million widening scheme was completed ahead of schedule in autumn 2014. The carriageway was widening over 1.9km to provide an additional lane from the Seagoe Road junction to the traffic signals at Kernan loop. Environmental and planting works have recently been completed. The scheme has been extremely beneficial to traffic progression on this key link road.



The road leading to the Seagoe loop.



A view of the road near the Kernan loop

SCHEME DESCRIPTION

A3 Friary Road at Dobbin Street Junction

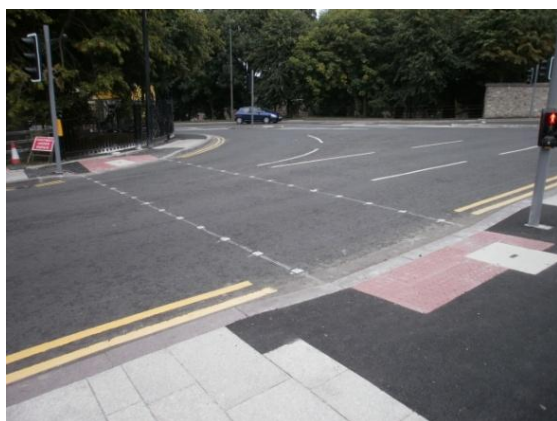
This £350,000 traffic management and resurfacing project was completed in summer 2014. The scheme upgraded the existing junction to an enhanced form of traffic control (MOVA) in an effort to maximise benefit to traffic. Pedestrian facilities were also added here to the side roads and dedicated right turns into Dobbin Street and the Palace Demesne, required to improve safety, were implemented. The scheme altered the existing layout to provide two lanes out of town and reduced the inbound traffic to one lane. This decision was taken following a review of the operation of all the junctions from Mall West through to here which showed this layout provided maximum benefit to traffic in the City.



The two lanes exiting the City



The Right turn into Palace Demesne



Improved Pedestrian Crossing facilities



A dedicated Right turn into Dobbin Street

SCHEME DESCRIPTION

A3 Friary Road at Newry Road/Scotch Street junctions

A £650,000 upgrade of this critical junction in Armagh City is substantially complete. The works incorporated significant carriageway widening that allow for two lanes of traffic at the junction to enter and exit the city as well as construction of a new link road through the car park that allows for improved traffic signal efficiency as the stagger between the Newry Road Junction and Scotch Street is removed. Pedestrian facilities have also been enhanced and dedicated right turns provided to improve road safety. This scheme compliments the existing Friary Road / Dobbin Street Lane scheme as detailed above providing two lanes exiting the city to reduce congestion around the busy Gaol Square and Barrack Street junctions. TransportNI would like to thank the council and DSD for their contribution towards this scheme. It should also be noted that this scheme coordinated resurfacing work and Northern Ireland Water sewer replacement works to maximise value for money and minimise public disruption.

B10 Rathfriland Road at Fernhill Road Junction (May's Corner)

A scheme to improve junction alignment and visibility at the Fernhill Road junction has been carried out here. The opportunity has also been taken to improve forward visibility and widen the carriageway at the junction to provide central ladder markings and a right turn pocket on the B10 in an effort to further improve safety here. TransportNI would like to acknowledge the cooperation of the many landowners affected by these works.





View to the left at the junction




The junction at the end of works

Schemes under construction and planned for 2015/2016

SCHEME DESCRIPTION	
<p>C185 Artasooley Road, Blackwatertown</p> <p>It is planned to provide 150m of Vehicle Restraint System at the above location in the current financial year.</p>	 <p style="text-align: center;">View of the Artasooley Road.</p>
<p>B7 Rathfriland Road / Dechomet Road Junction, Moneyslane</p> <p>A scheme to improve forward visibility is being finalised for here. Meetings with landowners have been scheduled and subject to the availability of lands and approval of the design standards, it is hoped to deliver this scheme in the current financial year.</p>	 <p style="text-align: center;">View exiting Dechomet Road</p>
<p>C185 Maydown Road, Tullysaran</p> <p>The provision of a new footway link is programmed to commence in October 2015. The corner improvement scheme which was planned at the junction near Mary Ann's pub will now be carried out as part of an approved housing development at this location.</p>	
<p>B77 Loughall Road at Kilmoriarty Hall</p> <p>A scheme to widen the carriageway at this location is currently being developed and will be delivered this year subject to the availability of the necessary resources. Initial discussions with the land owner have taken place and subject to the successful acquisition of the lands required this scheme could commence later in the autumn.</p>	
<p>B78 Mullurg Road at A51 junction</p> <p>A scheme to improve visibility on the approach to this junction is expected to commence later in the autumn with the necessary lands to facilitate the scheme having recently been acquired.</p>	

Schemes planned for 2016 / 2017 and onwards

<i>SCHEME DESCRIPTION</i>	
<p>A25 Newry Road, Rathfriland</p> <p>TransportNI are continuing to develop this scheme and delivery will be progressed as resources permit.</p>	 <p style="text-align: center;">View of bend towards Rathfriland</p>
<p>B9 Drumlin Road</p> <p>TransportNI are continuing to investigate the potential and merit of an improvement scheme at this location. The topography of the area is difficult and achieving a design to appropriate standards at reasonable cost and ensuring value for money is difficult.</p>	

3.2 COLLISION REMEDIAL Schemes Completed 2014 /2015

<i>SCHEME DESCRIPTION</i>	
<p>The aim of collision remedial schemes is to contribute to the Northern Ireland Road Safety Strategy by reducing by 50% the number of target collisions at a particular location. Schemes are identified from PSNI data which may take several months to verify before being released to the Department for consideration. Schemes have been completed at the following locations:</p>	
<p>A3 Armagh Monaghan Road near Knockbane The provision of high friction surfacing has recently been completed</p>	

SCHEME DESCRIPTION

B10 Rathfriland Road, Lisnacroppin

Improvements have been carried out to the super elevation as part of resurfacing with new high friction surfacing provided



A3 Northway at Mill Avenue junction

The provision of high friction surfacing was carried out earlier in the year

A3 Lurgan Road, Craigavon at Roundabout 4

Alterations to lane markings, visibility restriction and the provision of high friction surfacing have all been completed. Work continues on the provision of new road signing.

Schemes under construction and planned for 2015 / 16

SCHEME DESCRIPTION

A29 Keady Road, Ballyards

Work has been completed on this road realignment scheme to address the collision history here. The horizontal and vertical alignments have been improved along with forward visibility and carriageway width. This was completed in the summer. Additional accommodation works are still ongoing off road with completion expected in mid October 2015.

Scarva Street, Banbridge (Jinglers Bridge)

Following a review of collision data supplied by the PSNI, Jinglers Bridge is being investigated as a potential Collision Remedial site. It has been agreed that options to improve this location will be considered in conjunction with council as part of the development of the Banbridge Masterplan

3.3 TRAFFIC CALMING

Schemes Completed 2014 / 2015

SCHEME DESCRIPTION

Traffic calming schemes are assessed using the Departments policy and points are awarded based on traffic volume, speed, injury collision history and the nature of the environment. There are over 300 active requests for such measures in the council area. TransportNI will consider all new requests but due to resource limitations, we can only update existing ones as new collision data becomes available or where there has been a significant change to traffic patterns. The most effective traffic calming schemes at best reduce mean speeds to around 24mph. Sites with speeds recorded lower than 20mph will not be considered.

Schemes were completed this year at:

- **Langs Crescent, Armagh**
- **Coolmillish Road, Markethill**
- **Hamiltonsbawn**
- **Donaghcloney**

Langs Road, Armagh

A traffic calming scheme consisting of 5 No. ramps has been completed at this location.



Sign and hump at the start of the scheme



One of the other humps within the scheme

Schemes under construction and planned for 2015 / 2016

SCHEME DESCRIPTION

Cambrai Heights, Waringstown

The consultation process for traffic calming proposals in the Cambrai Heights area in Waringstown resulted in a lack of support from the residents of the area who the measures were intended to benefit. Of those residents who responded, three in four were against the scheme. Consequently the scheme has been withdrawn from our works programme.

SCHEME DESCRIPTION

Drumbreda Estate, Armagh

Consultation on traffic calming proposals for Drumbreda Estate in Armagh is complete and no objections were received. Given that the Cambrai Heights scheme is being removed from the programme, the resources are available to deliver this scheme. Construction work has now been ordered and should commence in the coming weeks.

Banbridge Road, Kinallen

A traffic calming scheme consisting of road humps and speed cushions has been completed on Banbridge Road, Kinallen.

3.4 TRAFFIC MANAGEMENT Schemes Completed 2014 / 2015

SCHEME DESCRIPTION

Kiln Road/Silverwood Road junction

New traffic signals have been provided at this junction. The scheme will improve traffic management on this key junction in Lurgan which also is an important node on the motorway diversion route as well as providing improved safety and controlled pedestrian facilities.



SCHEME DESCRIPTION

Traffic Signs, Road Markings and Carriageway Studs

Traffic signs, road markings and carriageway studs have been provided across the council area. Each request is considered and assessed using the guidance contained in the Traffic Signs Regulations.

Traffic Signals Maintenance

Traffic signals have continued to be maintained routinely and also as a result of vehicle collision damage and deliberate vandalism.

Speed Limits

Speed limits have been implemented or extended at the following locations:

- B2 Dromore Road at Gamblestown
- A3 Middletown
- A4 Dungannon Road, Portadown
- A3 Lurgan Road, Magheralin.
- Steps Road, Magheralin

Following the implementation of the necessary legislation signs will be erected on the following sites later in the autumn.

- Old Lurgan Road, Portadown
- Scotch Street/Moy Road, Portadown
- Moneyslane Village

Parking and Waiting Restrictions

Restrictions have been implemented at the following locations:

- College Hill, Armagh
- Gospel Lane, Banbridge
- Charlemont Gardens, Armagh
- E-CAR bay at Market Street, Tandragee
- Market Street and High Street, Lurgan
- Downshire Road, Banbridge
- Commercial Road, Banbridge

The legislation for the amendments to the parking and waiting restrictions in Lurgan streets following the Council Public Realm scheme is now complete. There has been difficulty providing the necessary signs to enable these restrictions to be enforced given the number of services located in the footways. It is hoped to have these issues resolved in the coming weeks.

SCHEME DESCRIPTION

Armagh City Centre

As part of the scheme recently completed at Friary Road/Newry Road junction some amendments to the legislation is required. Council will be notified of these changes in due course.

3.5 PEDESTRIAN MEASURES **Schemes Completed 2014 / 2015**

SCHEME DESCRIPTION

Main Street, Middletown

A new controlled crossing has been provided in Main Street, Middletown. The crossing utilises energy efficient Extra Low Voltage (ELV) technology and Puffin facilities.



Two views of the new Puffin crossing point in Main Street, Middletown

Footway at Upper Lisdrumchor Road

A section of footway has been provided on the Upper Lisdrumchor Road, Glenanne at its junction with the Mowhan Road. This was completed in September 2014.



SCHEME DESCRIPTION

Pedestrian Measures

New controlled PUFFIN crossings to improve safety for vulnerable road users such as pedestrians and cyclists have been provided at:

Avenue Road, Lurgan

A new controlled crossing has been provided on Avenue Road, Lurgan. The crossing utilises energy efficient Extra Low Voltage (ELV) technology and Puffin facilities.



Two views of the new Puffin crossing point in Avenue Road, Lurgan

Mall West (at Sainsbury's), Mall East (at White Walk) and College Hill (at Armstrong Primary School), Armagh

New controlled crossings have been provided at the three locations above in Armagh. The crossings utilise energy efficient Extra Low Voltage (ELV) technology and Puffin facilities.

New footways and cycle tracks have been provided at the following locations:

- 185m at Eastway combined footway and cycle track
- 25m at Upper Lisdrumchor Road, Glananne
- B2 Seagoe Road, Portadown 740m of combined footway cycle track

SCHEME DESCRIPTION

Footway At Mowhan Road, Markethill

Following a request from a local councillor a new footway link of 350m was proposed for Mowhan Road Markethill between the Primary School and the High School. This work commenced in May 2014 and was completed in July 2014.



A stretch of the new footway link



The start of one of the new stretches of footway

Schemes under construction and planned for 2015 / 2016

SCHEME DESCRIPTION

Dropped Kerb provision

A programme of dropped kerbs sites is currently ongoing throughout the council area. Accessible crossing points have been provided and are planned for following locations:

- Hillside Crescent, Ballyoran Park, Water Street, Castle Street and Obins Street Portadown.
- Main Street, Donagh Park and, Baird Avenue, Donaghcloney
- Primrose Gardens and Iveagh Drive, Banbridge
- Market Square, Princes Street and Lurgan Road, Dromore
- Main Street, Loughbrickland
- Tassagh Road, Keady
- Rathfriland
- Altmore, Clonmeen, Enniskeen and Parkmore Craigavon
- Kilwilkie Road, Lurgan
- Kilvergan Road, Aghacommon

SCHEME DESCRIPTION

Controlled Crossings

Barrack Hill, Armagh

Work to provide a new controlled crossing facility at this location adjacent to a busy playground has been suspended due to concerns over heat damage to the equipment by the nearby bonfire site. TransportNI are working with council to resolve this issue.

Church Street, Dromore and Scarva Street, Banbridge

The existing zebra crossings on Church Street Dromore and Scarva Street, Banbridge have been upgraded to provide internally illuminated poles as well the normal flashing beacon. This new equipment will make the crossings more conspicuous, particularly in low light conditions, and consequently be an aid to road safety.

3.6 SAFER ROUTES TO SCHOOL Schemes Completed 2014/ 2015

SCHEME DESCRIPTION

Safe Routes to Schools

Flashing school warning signs and enhanced road marking have been provided at the following locations as part of this initiative:

- Waringstown Primary School
- Seagoe Primary School
- Orchard Primary School
- Fairhill Primary School, Kinallen

Schemes under construction and planned for 2015 / 2016

<i>SCHEME DESCRIPTION</i>
Moyallen Primary School It is proposed to introduce a temporary 20mph speed limit on the approaches to Moyallen Primary School. Design proposals are currently being prepared for approval ahead of legislation making and installation during the current financial year.
St Peter's Primary School, Collegelands, Charlemont Design proposals and the necessary legislation will also be sought for a temporary 20mph speed limit at St Peter's Primary School, Collegelands, Charlemont. This will allow provision to commence next financial year or sooner should sufficient in-year funding become available.

3.7 Cycling Measures

Schemes under construction and planned for 2015 / 2016

<i>SCHEME DESCRIPTION</i>
Newry Road, Banbridge The provision of a cycle track is being considered at this location subject to suitable finance and design standards being met.
Kernan Road, Portadown A scheme to provide a shared use cycle track and footway along Kernan Road to the Integrated school is being developed and it is hoped that funding will become available to allow this project to be delivered this financial year. The project will also include a Toucan crossing on Kernan Road.

3.8 Legislation

Schemes Completed 2014 / 2015

SCHEME DESCRIPTION

Edenderry, Portadown

An experimental traffic order which bans right turn movements from Carrickblacker Road and Lurgan Road at this junction was implemented in February this year with the aim of improving traffic management in the area. The scheme to date has been operating extremely well. Consequently, it is the intention of the Department to make this order permanent. Work will commence on the necessary legislative changes in the coming months.

4.0 NETWORK MAINTENANCE

Principal Engineer- Arnold Hamilton (0300 200 7892)

Southern.Maintenance@drdni.gov.uk



Arnold is supported by the following staff:

Armagh
17 Ballynahonemore Road,
Armagh,
BT60 1JD

SECTION ENGINEER
John Hall (0300 200 7892)



Banbridge and Craigavon
Carn Industrial estate
Portadown,
BT63 5RH

SECTION ENGINEER
Ian Campbell (0300 200 7892)



TNI.ArmaghBanbridge&CraigavonWest@drdni.gov.uk

TNI.ArmaghBanbridge&CraigavonEast@drdni.gov.uk

This team is responsible for contacts with the public and elected representatives regarding road maintenance matters, highway inspections, resurfacing, responsive repairs, routine maintenance, winter gritting, road opening consents and licences, public liability claims and liaison with the service utility companies.

Asst Section Engineer
Desmond Blacker
17 Ballynahonemore Road,
Armagh,
BT60 1JD



Asst Section Engineers
Raymond Clarke
Carn Industrial estate
Portadown,
BT63 5RH

Ivor Johnston



Network Maintenance Support
Robert Twinem (0300 200 7892)
Transport.NISouthern.Maintenance@drdni.gov.uk

Divisional Statistics and Controls Assurance, Costings,
Financial bids and Allocations, Contracts and EI co-ordination,
Verge planting approvals and Streetworks Infringements.



4.0 NETWORK MAINTENANCE
4.1 CARRIAGEWAY RESURFACING
Schemes completed, 2014/15

ASPHALT RESURFACING.

Asphalt Resurfacing

Asphalt resurfacing is more appropriate to heavily trafficked roads and junctions. It can have a life expectancy of up to 20 years. During the past year we have carried out a range of complementary improvements to kerbing, drainage, and the like on asphalt schemes to enhance the value and quality of the work.

Across the Council area a total of 199,200 Sq metres of asphalt was laid during the 2014-15 financial year, including the following schemes:-

A3 Irish Street, Armagh from St Malachy's Church to Monaghan Road
Area 8,000 sq m



Irish Street at the Friary Road underpass



Looking towards the Keady Road



The Right Turn Lane at Keady Road



The beginning of the scheme

ASPHALT RESURFACING.

A3 Friary Road, Armagh from the bridge to Armagh City Hotel Area 5,000sq m



The start of the resurfaced section



The section looking towards Newry Road

A3 College Hill from the Court House to East of Mullinure Lane Area 11,600sq m



The road close to Tower Hill



The road at the Royal School playing fields

U4501 Moyallen Park, Gilford 1,000 sq m

The carriageway and footways have been resurfaced within the development.



ASPHALT RESURFACING.

A3 Monaghan Road from Coolkill Road to south of Middletown

Area 15,000 sq m



Main Street after resurfacing works



Another view of Main Street after resurfacing



A section of the Monaghan Road after resurfacing



The start of the works on the Monaghan Road

A28 Gosford Road, Markethill south of Loughgilly

Length 800m.



A stretch of the road south of Loughgilly



The start of the resurfaced stretch of road

ASPHALT RESURFACING.

A51 Hamiltonsbawn Road

Area 16,000 sq m



The start of asphalt laying



The road following resurfacing

B77 Ballygassey Road, Loughgall

Area 3,300sq m



Laying new kerbs along the road edge



Adjusting the height of the newly laid kerb



Two views of the road after resurfacing with asphalt was completed

ASPHALT RESURFACING.

B2 Lurgan Road, Dromore at Ballynaris

2,200 sq m



U4465 Ashgrove Avenue, Banbridge

6,600 sq m



U4463 Bridgeways, Dromore Road, Banbridge

2,500 sq m

The carriageway has been resurfaced and footways have been reconstructed within the development.



At the top end of the estate after resurfacing



At the entrance to the estate

ASPHALT RESURFACING.

U4467 Tullyear Road, Banbridge From its junction with A26 Newry Road to the previously widened section.	900 sq m
A3 Lake Road, Craigavon From Roundabout No. 1 to Roundabout No. 2	4,300 sq m
A4 Dungannon Road From 150m south of Cloncore Road to House No.154	10,800 sq m
A4 Dungannon Road From Cloncore Road to M1 Roundabout	6,000 sq m
A50 Gilford Road, Portadown From Carrickblacker Road to Filling Station	3,700 sq m
B2 Seagoe Road From Wilson's Auctions to Carn Roundabout	11,100 sq m
B12 North Street, Lurgan From Church Place to Wellington Street	2,000 sq m
B12 Cornakinnegar Road From North Circular Road towards Aghagallon	3,200 sq m
C154 Union Street / Tandragee Road, Lurgan From Millennium Way to Roundabout B	14,600 sq m
C358 Hall Road, Donaghcloney	9,200 sq m
U1250 Bleary Road From Drumnacanvy Road past Blacker's Mill	2,300 sq m
U1356 Connaught Park, Portadown	1,600 sq m
U1357 Queen Street, Portadown	1,300 sq m
U1362 Upper Ramone Park	700 sq m
U1352 Obin Street From Park Road to House No.128	4,200 sq m
U1361 Highfield Heights	3,500 sq m

ASPHALT RESURFACING.

U1401 Inglewood, Lurgan	1,300 sq m
B10 Banbridge Road, Rathfriland From Lissize Road to near Lisnacroppin Road	12,200 sq m
B10 Glenloughan Road, Scarva From Drumiller Lane to Fir Tree Lane	3,100 sq m
B10 Scarva Road, Banbridge From Rosevale Road to Blue Road	6,100 sq m
U4503 Brookfield Close, Gilford From Stramore Road to Brookfield Manor	900 sq m
U4465 Maryville Park & Close, Banbridge From Rathfriland Road to house no. 64 Maryville Park	3,700 sq m
A50 Bann Road, Castlewellan Near Leitrim Road junction	2,800 sq m
A50 High Street, Gilford Near Hill Street junction	800 sq m
B31 Newtownhamilton Road	8,975 sq m
B132 Madden Road/St Patrick Street, Keady	1,000 sq m
B133 Main Street, Mountnorris	6,000 sq m

BITUMEN MACADAM RESURFACING.

Bitumen Macadam Resurfacing

This is a more flexible material than asphalt and is used on less busy rural roads. It is more suitable for the deformation and movement, which can be expected due to weaker underlying ground conditions. As with asphalt resurfacing, we carried out a range of other improvements to add value to the work.

Across the Council area a total of 254,000 Sq metres of bitumen macadam was laid during the 2014-15 financial year, including the following schemes:-

Drumgorran Road, Middletown

Area 4,000 sq m



Mullinary Road

Area 6,000 sq m



Off Upper Darkley Road, Keady

Area 4,000 sq m



BITUMEN MACADAM RESURFACING.

Dernalea Road
Area 3,000 sq m



Stockingsman Hill, Armagh
Area 4,000 sq m



Edenaveys Road, Armagh
Area 5,000 sq m



U4134 Drumboy Road, Dromara
1,600 sq m
From Glen Loanin footpath to House No 20



BITUMEN MACADAM RESURFACING.

U4328 Dolly's Brae, Leitrim

5,000 sq m

Sections near the Magheramayo Road junction and Leitrim Road junction.



The road at the Magheramayo junction



The length of road near to Leitrim Road

U4270 Meenan Road, Poyntzpass 1,800 sq m

Sections including the low lying area and close to the Greenan Road junction.



U4326 Gargarry Road, Leitrim 2,000 sq m

A section of the road from the Chapel to the A50 Ballyward Road.



BITUMEN MACADAM RESURFACING.

U4324 Magheramayo Road 11,500 sq m

The start of the section at the Dolly's Brae junction.



C308 Finnis Road, Finnis 1,300 sq m
Sections from Carrighan Road junction to the top of the hill.

U4167 Park Lane, Gilford 5,600 sq m
From the A51 Tandragee Road to house No.19.

U4185 Diamonds Lane, Katesbridge 1,900 sq m
Full length

C352 Loughbrickland Road, Scarva 16,300 sq m
Full length apart from a short section previously resurfaced near Mullabrack Road junction.

U7317 Tonnagh Road, Killylea 5,600 sq m

U1039 Derrycrow Road, Lurgan 8,100 sq m

U1113 Tullydagan Road, Lurgan 3,700sq m

U1160 Foy Road, Portadown 4,300sq m

U1332 Off Whiteside's Hill 2,150sq m

U8622 and U8623 Drumherney Road 2,800sq m

B3 Coolmillish Road 8,700sq m

B131 Teaguy Road 18,677sq m

B77 Red Lion Road 15,135sq m

B115 Battleford Road 6,900sq m

U8022 Pinley Green 1,200sq m

B114 Shanecracken/Tannokey Road 20,800 sq m

SURFACE DRESSING SCHEMES

Surface Dressing of Carriageways

Surface Dressing is a surface treatment used to seal roads to prevent the ingress of water and restore the surface texture of the carriageway.

No surface dressing was carried out in Banbridge area during the 2014 season, however funding allocated for this work was used to prepare the following roads for future Surface Dressing programmes:-

B7 Ballyrone Road 250 sq m	C322 Drumgoland Road 800 sq m
C352 Blue Road 450 sq m	C374 Flough Road 5,200 sq m
U4003 Lough Road 6,100 sq m	U4004 Gregorlough Road 7,650 sq m
U4068 Valley Road 4,250 sq m	U4305 2,000 sq m
U4333 Murrays Hollows 900 sq m	U4334 Seafin Road 600 sq m
U4335 Whitegate Road 1,300 sq m	U4336 Rockmount Road 1,700 sq m

Across the Council area a total of 365,000 Sq metres of surface dressing was laid during the 2014-15 financial year.

Roads treated within Armagh and Craigavon areas were:-

Location	Location	Location	Location
Derrycaw Road	Canary Line	Collegelands Road	Drumrusk Road
Tullysaran Road	Knappagh Road	Friary Road	Granemore Road
Cortamlet Road	Ballyloughan Road	Cashel Road	Clarkes Road
Tamnamore Road	Laurelvale Road	Markethill Road	Vestry Road
off Ballygroobany Road	Sleepy Valley, Richhill	Parrs lane	Granemore Road
Bessbrook Road Mountnorris	Hamiltonsbawn Road	Cladymilltown Road	Mavemacullen Road.
Irwin's Lane, Kilmore	Aghory/Mullaleish Road	Coolmillish Road (From C204 Clady Road)	Springvale Road (From B134 up Hill)
Aughnagurgan Road (A29 Darkley Road to C203 Clarks Road)	Coolmillish Road (C207 Mountain Rd Jct to U8027 Jct)	Aughnagurgan Road (Clarks Road Jct to C200 Upp Darkley Road)	Mowhan Road (From U8054 to Boundary)
Vestry Road	Cortamlet Road	Clarke's Road	Cashel Road
Aghory Road (Cornascriebe)	Friary Road	Pat's Turn (Off Ballynabragget Rd	
Drumnacanny Road	Dean's Road	Cloncarrish Road	Tartaraghan Road
Old Kilmore Road	Moygannon Lane	Knocknagore Road	Breagh Road
Off Farlough Road	Lenny's Road	Derryloiste Road	Scots Lane
Damhill Road	Glass Moss Road	Breagh Lane	Druminally Road
Drumgask Lane	Valley Lane	Acre Lane	The Slopes
Dukestown Lane	Off Derrycarne Road	Off Derrylettiff Road (2 No sites)	Liscorran Road

OTHER SURFACE TREATMENTS

MICRO SURFACING	
The following areas were treated with micro surfacing	
Armagh 2014/15 18,900 sq m	
Road Name	Road Name
Niall's Crescent	Umgola Heights
Orangefield	Brentwood Park
Corcreevy Drive	

MICRO SURFACING planned for 2015 / 2016

A programme for micro surfacing has been developed for Banbridge with work due to start in late September. Schemes are proposed in Granville Gardens (2,300sq m), Ballygowan Park (2,000sq m), Edendell (800sq m) and the Pinley/Harberton estate (10,200sq m). Work in the Armagh area is then expected to commence in October 2015 in the following areas:-

Fairgreen Park, Keady (3,350 Sq m), Cardinal Dalton Park (1,100 Sq m), Esker Park, Killylea (1,500 Sq m), Bunker Hill, Markethill (760 Sq m), Neills Villas, Loughgilly (500 Sq m), St John's Terrace, Mullabrack (700 Sq m), Annahugh Park (2,000 Sq m), Rose Park, Laurelvale (1,175 Sq m), Laurel Park, Laurelvale (531 Sq m), Maynooth Heights, Richhill (972 Sq m), Jubilee Park, Armagh (2,000 Sq m), Ardmore Drive, Armagh (1,000 Sq m), Convent Close, Armagh (530 Sq m), Church View, Charlemont (2,230 Sq m).

4.2 CARRIAGEWAY RESURFACING

Schemes under construction and planned for 2015 / 2016

ASPHALT RESURFACING

It is proposed to strengthen the road foundation where necessary and improve the surface with asphalt on selected lengths of the roads listed below:-

A28 Gosford Road, Markethill either side of the Bessbrook Road junction
20,500sq m

Length 1,500m proposed for completion in December 2015.

ASPHALT RESURFACING

A29 Keady Road, Armagh This resurfacing work was carried out in July in conjunction with the road improvement scheme at Ballyards.	4,500 sq m
U4405 Wrights Park & Spelga Gardens, Rathfriland Work is underway to resurface the carriageway & footways throughout the estate.	2,600 sq m
A27 Mahon Road, Portadown Completed May 2015	6,900 sq m
A27 Hospital Roundabout	800 sq m
A26 Banbridge Road, Lurgan From Ballynabragget Road to Ballylough Road Completed August 2015	3,900 sq m
U1408 Brownlow Terrace, Lurgan From William Street to Ulster Street Completed August 2015	800 sq m
B12 North Street, Lurgan Along failed edge of carriageway between football club and Oakleigh Heights	600 sq m
B78 Brownstown Road, Portadown From Drumard Avenue to Northway Off slip Completed August 2015	4,000 sq m
U1352 Obin Street, Portadown Extension of last year's scheme	1,400 sq m

BITUMEN MACADAM RESURFACING

It is proposed to strengthen the road as necessary and resurface with bitumen macadam selected lengths of the roads listed below:-

B32 Castleblaney Road	1573m / 9800sq m
B32 Madden Road, Keady	2403m / 10940sq m
Armagh Road Newtownhamilton	1400m / 8000sq m
U8404 Granemore Road, Keady	900m / 500sq m Completed in May 2015
B3 Loughbrickland Road, Rathfriland	1900m / 12300 sq m
U4204 Old Newry Road, Banbridge	630m / 4400 sq m Completed in August 2015

SURFACE DRESSING SCHEMES

Roads which were regulated and resurfaced over the past few years required sealing.

These roads took priority, were considered and substantially completed this year.

Surface Dressing of the following roads was completed during the summer months:-

A29 Darkley Road	A29 Darkley Road U8321 to U8422
A29 Darkley Road U8422 to U8437	A29 Darkley Road U8437 to U8443
A29 Keady Road	B3 Ballinaskeagh Road
B3 Coolmillish Road (2 sections)	B3 Derrynoose Road
B3 Fergort Road	B3 Gilford Road
B3 Markethill Road, Tandragee	B3 Tandragee Road, Markethill
B3 Tassagh Road (2 sections)	B3 Scarva Road
B7 Ballyroney Road	B7 Dromara Road
B25 Greenhill Road	B28 Summerisland/Ardress Road
B132 Madden Road	B196 Clonmakate Road
B196 Maghery Road	C160 Columbkille Road
C162 Derryall Road	C162 Drumcree Road
C162 Drumgoose Road	C168 Derryhale Road
C196 Derrynoose Road	C197 Crosskeys Road (2 sections)
C200 Upper Darkley Road (2 sections)	C201 Dundrum Road (3 sections)
C208 Derryraine Road	C210 Derryhale Road-North end
C307 Katesbridge Road	C307 Kilkinamurray Road
C307 Kinallen Road (2 sections)	C322 Drumgooland Road
C322 Glen Road	C345 Ardbrin Road
C345 Glebe Road	C349 Donaghcloney Road
C349 Mullafernaghan Road	C352 Blue Road
C352 Drumnascamph Road	C352 Lowtown Road
C354 Blackskull Road	C364 Clare Road
U1002 Boghead Bridge Road	U1035 Rock Lane
U1036 Ballykeel Road	U1047 Island View Lane
U1048 Oxford Island Road	U1064 Hall Rampart
U1065 Bay Rampart	U1088 Derryvinney Road
U1113 Tullydagan Road	U1123 Ballymacbredan Road
U1174 Tannaghmore West Road	U1245 Off Bluestone Road
U1307 Horseshoe Lane	U1309 Off Unshinagh Lane
U1310 Unshinagh Lane	U1314 off Tandragee Road
U1322 Off Mahon Road	U1326 Off Mullahead Road
U1335 The Street	U1409 Liscorran Road
U1412 New Line, Lurgan	U4086 Whinney Hill
U4096 Broken Bridge Road	U4115 Tullinisky Road

SURFACE DRESSING SCHEMES

U4199 Drumgooland Road	U4252 Drumnagally Road
U4255 Manse Road	U7165 Ballynahonemore Road
U7311 Navan Fort Road	U7317 Tonnagh Road
U7318	U7344 Yank's Lane
U7353 Donnelly Hill Road	U7373 Aughantarragh Road
U7376 Corr Hill Lane	U7399 Long Loanan
U7400 Mullanary Road	U8121 Blackquarter Road
U8132 Off Friary Road	U8133 Off Friary Road
U8271 Killafaddy Road	U8273 Tullynaggin Road
U8274 Tullynaggin Road	U8301 Slaterock Road
U8312 Viewpoint Road	U8524 Off Drumhillery Road
U8525 Rawes	U8531 Glassdrummond Road
U8541 Cargalissgorran Road	U8549 Off Fergort Road
U8551 Off Fergort Road	

4.3 FOOTWAY RECONSTRUCTION Schemes Completed 2014 / 2015

FOOTWAY SCHEMES	
<p>Footway Maintenance Work Footway improvement works have been carried out, sometimes in conjunction with other works at:-</p>	
<p>Mowhan Road, Markethill</p> <p>Mowhan Road Markethill between the Primary School and the High School</p>	
<div style="display: flex; justify-content: space-around;">  </div> <p style="text-align: center;">Two lengths of the newly constructed footway from the Primary School to the High School</p>	
<p>A3 College Hill, Armagh</p> 	<p>Friary Road, Armagh</p> 
<p>A3 Irish Street, Armagh</p>	<p>Newry Street, Markethill</p>
<p>Cladymore</p>	<p>Monaghan Street, Milford</p>
<p>The Mount, Tandragee</p>	<p>Cregagh Gardens</p>

FOOTWAY SCHEMES

Bridgeways, Banbridge



Moyallen Park, Gilford



Tullyear Road, Banbridge



Downshire Place, Banbridge



**B2 Brownlow Road, Craigavon
at Westacres**

**U1222 Cambria Heights,
Waringstown**

U1356 Connaught Park, Portadown

B2 Seagoe Road, Portadown

**U1408 Woodville Avenue / Heights,
Lurgan**

**C154 Union Street / Tandragee Road,
Lurgan**

U1357 Queen Street, Portadown

U1352 Obin Street, Portadown

U1409 Inglewood, Lurgan

**C352 Drumnascamph Road,
Lawrencetown**

B2 Lurgan Road, Dromore

U4142 Hillside Crescent, Lenaderg

B7 Dromara Road, Moneyslane

U4353 Millstone Close, Moneyslane

B10 Scarva Road, Banbridge

U4470 Iveagh View, Banbridge

B10 Glenloughan Road, Scarva

4.4 DRAINAGE MAINTENANCE

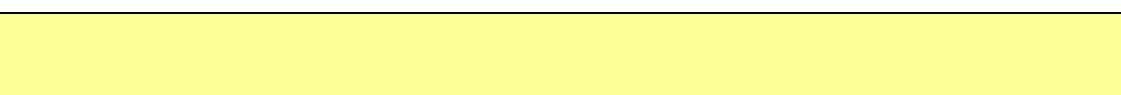
Schemes Completed 2014 / 2015

DRAINAGE SCHEMES	
DRAINAGE MAINTENANCE	
Drainage maintenance works have been carried out on various roads throughout the year. The drainage system has been improved by roadside piping, gully installation and culvert replacement and has continued throughout the year as deemed necessary and as funding permitted.	
Maypole Hill, Dromore	Old Newry Road, Banbridge
Rockmount Road, Rathfriland	Magherabeg Road, Dromore
Damhill Road	Orange Lane
Derrymacash Road	Cannagola Road
Cranny Road	Bleary Road
Woodside Green	Drumnacanvy Road
The Glebe	Bluestone Road
Clonavon Avenue	Annaghdale Place
Jervis Street	Ballyoran Park
Churchill Park	Moyraverty Road
Gilford Road, Portadown	Edenderry Gardens
Burnside	Enniskeen
Ardowen	Dean's Grange
Derryvar Road	Cannagola Beg Road
Ashgrove Road	Banbridge Road, Waringstown
Monree Road	Kinnego Embankment
Rock Lane	Gravel Lane
Dunkirk Road	Waring Terrace
Clare Road	Seagoe Road
Dungannon Road	Clanrolla Park
College Walk	Richmount Gardens
Acres Road	Old Kilmore Road
Hall Road	Moy Road
Cusher Road	Cooley Hill
Tandragee Road	Drumnamether Road
Tievenamara Road	Mullyard Road
Derryraine Road	Newtownhamilton Road

DRAINAGE SCHEMES

Markethill Road	Masons Lane
Tullysaran Road	Listrakelt Road
Fergot Road	Hanslough Road
Monaghen Road	Madden Road
Kilcreevy Road	Tonnagh Road
Carrickaness Road	Tannaghmore Road
Armagh Road	Drumhirk Road
Darkley Road	Drumcullen Road
Blackwatertown Road	Newry Road
Ballymacnab Road	Lough Road
Tallbridge Road	Laurelvale Road
Foley Road	Glenanne Road
Red Rock Road	Drumnasoo Road
Collegelands Road	Mowhan Road
Corlust Road	Granemore Road
Clady Road	Drumsavage Road
Cathedral Road	Drumnahavil Road
Bracknagh Road	Abbey Street
Magheryarvil Road	Mullannasilla Road
Navan Fort Road	Old Scarva Road
Fellowshall Road	Rock Road
Lisnally Lane	Ahorey Road
Cormeen Road	Farnaloy Road
Maypole Hill, Dromore	Magherabeg Road, Dromore
Rockmount Road, Rathfriland	Loughbrickland Road, Scarva
Lenaderg Road, Banbridge	Ouley Road, Glasker
Old Newry Road, Banbridge	Millvale Road, Rathfriland
Edenderry Road, Banbridge	Legananny Road, Scarva
Ballynanny Road, Loughbrickland	

4.5 ROUTINE MAINTENANCE



GENERAL
 Normal maintenance activities such as patching, grass cutting, weed spraying, gully emptying and winter maintenance have been carried out as appropriate during the year.

REFURBISHMENT
 This is the laying of bituminous materials on roads as one layer to provide an improved surface. The roads listed below were treated in this way towards the end of the year.

Across the Council area approx 465,000 Sq metres of this work was completed during the 2014/15 financial year.

C160 Bannfoot Road	C164 Drumamphy Road
C209 Tirnascoibe Road	U1071 Pier Rampart/Byrne's Rampart link
U1078 Esky Lane	U1083 Off Charlestown Road
U1090 Derrycaw Lane	U1123 Ballymacbredan Road
U1124 Cottage Road	U1146 Tarthlogue Road
U1154 Off Dungannon Road	U1155 Off Dungannon Road
U1172 Kilvergan Lane	U1203 Orange Lane
U1204 Lismaine Road	U1205 Drumnabreeze Road
U7301 Navan Fort Road	U7301 Old Killylea Road
U7311 Tonnagh Road	U7316 Bracknagh Road
U7348 Edenderry Lane	U7353 Donnelleys Hill Road
U7525 Cusanagh Road	U7539 Mongomerys Lane
U7615 Mullnasilla Road	U8352 Goland Road
Mullyloughran Lane	Off Redmonds Corner

4.6 UTILITY WORKS

SCHEME DESCRIPTION		
<p>The Maintenance Section Offices in the Council area have dealt with in excess of 28,000 notifications relating to Street Works.</p> <p>These notifications relate to works carried out by BT, NIE, NIW, BGE, and Firmus Energy, as well as notifications relating to our own resurfacing works. We regularly carry out inspections of utility companies' reinstatements which remain their responsibility until the expiry of the maintenance period, to help ensure they comply with the relevant standards.</p>		
<p>The following major utility works have been completed or are planned this year in the Council Area.</p>		
Location	Utility Involved	Nature of Work
Milltown Road - completed	NIW	New main
Lonsdale Road - ongoing	NIW	New sewer
Loughgall Road - completed	NIW	New sewer
Railway Street - not started	NIW	New sewer
Courthouse Roundabout - not started	NIW	New sewer
The Mall West - not started	NIW	New sewer
The Mall East - not started	NIW	New sewer
Barrack Street - ongoing	NIW	New sewer
Newry Road- not started	NIW	New sewer
Alexander Road - ongoing	NIW	New sewer
Glebe Hill Road/Tandragee - completed	Firmus Energy	New gas main
Barrack Street - completed	Firmus Energy	New gas main
Scotch Street - completed	Firmus Energy	New gas main
Friary Road - ongoing	Transport NI	Junction alignment
The Rock Road	NIW	New sewer
Ardmore Road	NIW	New sewer
Mullyloughran Lane	NIW	New sewer
Craigavon Section 2014 / 2015		
Killaghy Road Cornakinnegar Road Aghalee Road Colane Road Ballykeel Road Brankinstown Road	NIW	New Water Main from Castor Bay to Aghalee
Mossvale Road, Dromore	NIE	Replacement cables
Alexander Park, Katesbridge	NIW	Replacement pipes
Rowantree Road, Dromore	NIW	Replacement pipes

Schemes under construction and planned for 2015 / 2016

<i>SCHEME DESCRIPTION</i>		
<p>The following notifications of major Street Works which are planned for the year 2015/16. The notification process by utilities is ongoing throughout the year and reflects network expansions and customer demand.</p>		
Location	Utility Involved	Nature of Work
Fairgreen Road	NIW	New sewer
Alexander Drive	NIW	Replacement main
Alexander Park	NIW	Replacement main
Alexander Road	NIW	Replacement main
Alexander Avenue	NIW	Replacement main
Sandymount Road	Firmus Energy	New gas main
Cloveneden Road	Firmus Energy	New gas main
Creenagh Road	Firmus Energy	New gas main
Drumilly Road	Firmus Energy	New gas main
Sugarisland Road	Firmus Energy	New gas main
Ballygassey Road	Firmus Energy	New gas main
Cow Hill Road	Firmus Energy	New gas main
Sleepy Valley	Firmus Energy	New gas main
Richhill village, all developments to be connected in an ongoing programme throughout 2015/16.	Firmus Energy	New gas mains

5.0 STREET LIGHTING

Principal Engineer-Reynold Nicholson (0300 200 7892)

reynold.nicholson@drdni.gov.uk



Reynold is supported by the following staff:

SECTION ENGINEER

Jack Robinson

jack.robinson@drdni.gov.uk

Street Lighting Depot
Carn Industrial Estate
Portadown



5.1 Street Lighting Maintenance

Due to budget constraints we have had to curtail maintenance and our external maintenance contractors have been stood down. TransportNI's own Operations & Maintenance Street Lighting staff will deal with street lighting faults in priority order i.e. firstly - faults that are posing an electrical or structural hazard, secondly - group outages, and thirdly – group day burners. Unfortunately, at present single outages and single day burners are a lower priority and may take some time to be repaired as they are being dealt with in the most efficient order which will usually be by inspection route. This will mean considerable delays for the repair of individual street lights.

5.2 Street Lights on Private Developments

230 street lights on private developments have been adopted by TransportNI in the ABC Council area in the 2014/2015 financial year

5.3 Lighting Schemes Completed or Under Construction in the 2014/2015 Financial Year

Work is in progress or has been completed (as indicated) on the following schemes:

Town	Location	No of Lights	Scheme Type	Progress
Armagh	Annahugh Park	24	Relighting	Complete
Armagh	Fairgreen Park	62	Relighting	Complete
Armagh	Thornhill Avenue/Crescent	10	Relighting	Complete

Town	Location	No of Lights	Scheme Type	Progress
Keady	Caramoyle Estate	17	Relighting	Complete
Keady	Lir Gardens	1	Infill	Complete
Kilmore	Kilmore Park	29	Relighting	Complete
Markethill	A28 Portadown Road Junction	14	New	Complete
Markethill	Green Park Avenue/Drive	28	Relighting	Complete
Banbridge	Castlewellan Road	37	Relighting	Complete
Banbridge	Lurgan Road	74	Relighting	Complete
Banbridge	Milford Green	13	Relighting	Complete
Dromore	Laganvale Park	16	Relighting	Complete
Dromore	Maypole Hill	21	Relighting	Complete
Dromore	Mount Street	13	Relighting	In Progress
Gilford	Brookfield Estate	7	Relighting	Complete
Craigavon	Highfield Road/Balteagh Road	79	Relighting	In Progress
Lurgan	Silverwood Road (Ph2)	49	Relighting	In Progress
Portadown	Deer Park	8	Relighting	Complete
Portadown	Hampton's Corner	24	Relighting	In Progress
Portadown	Kernan Gardens	38	Relighting	Complete
Portadown	Northway (west side)	80	Relighting	Complete
Portadown	Princess Way	60	Relighting	Complete

5.4 Schemes Planned For 2015/2016

<i>Town</i>	<i>Location</i>	<i>Scheme Type</i>
Killyleagh	Esker Park	Relighting
Armagh	Umgola Heights	Relighting
Tandragee	Armagh Road	Infill

<i>Town</i>	<i>Location</i>	<i>Scheme Type</i>
Banbridge	Hillhead Park	Relighting
Banbridge	Dromore Road	Relighting
Annaclone	Monteith Road	NIE Pole Replacement
Craigavon	Northway (Kernan loop to Marlborough House Roundabout)	Relighting
Portadown	Ballyoran Park (Phase 1)	Relighting

5.5 LED Project

TransportNI Street Lighting Section intend to carry out a large scale pilot project in the Craigavon and Banbridge areas to change the majority of the street lights in these areas to LED type light fittings.

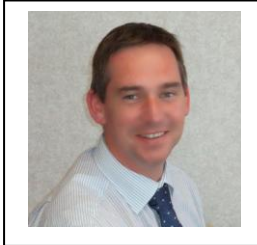
The outcomes will be monitored and assessed but the expectation is that there will be a reduction in electricity consumption and reliability of the lighting units will increase, significantly reducing the need for maintenance visits.

It is anticipated that the project, which will involve changing in excess of 20,000 lighting units, will take 12 to 18 months to complete.

6.0 NETWORK PLANNING

Principal Engineer- James Kelly (0300 200 7892) traffic.southern@drdni.gov.uk

James is supported by the following staff:



Development Control and Private Streets
Senior Planning Engineer - Thomas Kelly (0300 200 7892)
traffic.southern@drdni.gov.uk

Thomas' team based in Marlborough House (Craigavon) deals with Development Control issues, Private streets Determinations, Bonds and Adoption certificates in Armagh City, Banbridge and Craigavon Borough Council Area.



Development Control

Planning Engineer:
David Sheard (0300 200 7892)
traffic.southern@drdni.gov.uk



Development Control

Planning Engineer:
Val Russell (0300 200 7892)
traffic.southern@drdni.gov.uk



Private Streets – Adoptions and Enforcement

Planning Engineer:
Kieran Conlon (0300 200 7892)
traffic.southern@drdni.gov.uk

6.1 DEVELOPMENT CONTROL: PLANNING APPLICATIONS

In carrying out their planning functions Councils have a duty to consult a range of statutory bodies. Transport NI on behalf of the Department for Regional Development has entered into an agreement with each District Council to provide expert advice on roads and transportation related issues.

Transport NI in its consideration of planning applications, takes into account aspects of development which could prejudice traffic progression and safety in terms of junction capacity, access arrangements, parking standards and provision, road width, radii, gradients, drainage and sight lines. A detailed Transport Assessment may be required for larger developments where potential traffic impact may extend to road junctions some distance from the development site and where infrastructure improvements are deemed necessary as mitigation.

In the case of housing developments, the Private Streets (NI) Order 1980 is applied if a planning application includes streets which are to become public and maintainable by the Department. Development Control/Private Streets Section determines the area to be adopted, arranges for the calculation of the bond amount, supervises construction of the streets and, following satisfactory completion by the developer, completes the process for adoption into the public road network. Should the developer not complete the streets, Transport NI can take appropriate enforcement action under the Private Streets Order to ensure satisfactory completion of street works funded by the bond.

Other associated Development Control work includes provision of input to Pre-Planning Enquires, presentation of evidence at Planning Appeals and the approval of accesses onto the public road under Article 80 of the Roads (NI) Order 1993.

During the reporting period from 1 April 2014 to 31 March 2015 Development Control Section dealt with:-

Planning Applications	1112
Pre-Planning Enquiries	58
Planning Applications involving Private Streets Order	50
Planning Appeals	5

Major Planning Applications included:

Richhill EI scheme

New Lidl store Banbridge

New Cinema at Outlet Banbridge

Housing development at Eastway, Craigavon 151 houses

New Cinema at Highfield, Craigavon.

During the reporting period from 1 April 2015 to mid September 2015 Development Control Section dealt with:-

Planning Applications	469
Pre-Planning Enquiries	18
Planning Applications involving Private Streets Order	21
Planning Appeals	4

Major Planning Applications included:

Housing sites at:

Drumnagoon, Kernan Craigavon

Old Manse Green, Banbridge

Mount Hall, Birches

Loughgall Road, Portadown

Lake Road, Pinebank, Craigavon

6.2 DEVELOPMENT CONTROL: ROADS (NI) ORDER 1993, ARTICLE 80

Article 80 applies to new vehicular accesses on to unclassified roads or agricultural accesses on to classified and unclassified roads. It covers proposals such as new driveway entrances and dropped kerbs and is used where planning permission is not required.

During the reporting period 1 April 2014 to 31 March 2015 Transport NI dealt with 37No. Article 80 applications.

During the reporting period from 1 April 2015 to mid September 2015 Transport NI dealt with 15No. Article 80 applications.

6.3 PRIVATE STREETS: ADOPTIONS

During the reporting period 1 April 2014 to 21 March 2015 Private Streets Section has been successful in adopting a total of 53 private developments comprising 4378 mtrs of carriageway, 2029 mtrs of footway and 450 mtrs of parking, into the publicly maintained road network.

These private developments include:

Gough Avenue, Armagh

Loughgall Mews, Loughgall

Armagh Orthodontic Clinic, Armagh

Old Grange, Stage 2, Armagh

Ardmore Road, Stage 1, Armagh

Barrack Street, Armagh

Culdee Crescent, Armagh

Derryscollop Road, Dungannon

Annareagh Road, Richhill, Stage 1

Desart Lane, Armagh, Stage 1

Station Road, Scarva

Ballygowan Road
Bannview Mews- Stages 1 and 2
Moorlands Court
Kinallen Manor- Stages 1, 2 and 3
7 and 9 Huntly Road
Iveagh Manor
Church Road, Annaclone
Rathfriland Street
Clover Valley, Blackskull, Stage 1
Riverside, Annaclone, Stage 2
Dronehill Road, Banbridge, Stage 1
Old School Court, Kinallen, Stage 1
Jubilee Road Dromore, Stage 1

Ceare Special School, Lurgan, Stage 1
Raughlan Meadows, Derrymacash, Stage 7
Ennis Green, Lurgan, Stage 1
Derryloiste Meadows, Derrytrasna, Stage 1
Raughlan Lane, Derrymacash
Portadown Railway Station
Woodside Green, Portadown, Stage 1
Ballynamoney Heights, Lurgan, Stage 2 and 3
Glenwood Park, Lurgan, Stage 3
Market Street, Lurgan, Stage 1
Breagh Hill, Portadown, Stage 9
Mahon Road, Portadown, Stage 1
Monree Hill, Donaghcloney, Stage 1
Brownlow Road, Craigavon, Stage 2
Ballynacor Meadows, Portadown, Stage 2
Ballymacbredan Road, Magheralin

The following private developments were brought to adoption standard through enforcement action:

Windy Ridge, Banbridge, Stages 1 and 2
Toberhewny Lodge, Waringstown, Stage 1, 2 and 3
Millennium Way, Lurgan, Stage 1
Loughgall Road Roundabout, Portadown, Stage 1
Willowfield Common, Lurgan, Stage 2
Birchdale Manor, Lurgan, Stage 1

A Right Turning Lane on Cathedral Road, Armagh (for a Nursing Home) was also delivered through enforcement.

During the reporting period from 1 April 2015 to mid September 2015 Private Streets Section has been successful in adopting a total of 39 private developments comprising 3595 mtrs of carriageway, 2984 mtrs of footway and 548 mtrs of parking, into the publicly maintained road network.

These private developments include:

Rockfield Downs, Armagh, Stage 1
Granemore Road, Keady, Stage 3
Portadown Road, Richhill, Stages 1 and 2
Derrynoose GAC, Stage 1
Cornmarket Court, Tandragee, Stage 1
Linvara, Tandragee, Stages 2 and 3
Castle Rise, Tandragee, Stages 8-11
Annahugh Hill, Loughgall, Stages 1 and 2

Adjacent to St Theresa's Church, Banbridge, Stage 1
Castlewellan Road, Banbridge, Stage 1
Drumadonnell Primary School, Stage 1
Scarvagh Heights, Scarva, Stages 1, 2 and 3
Oak Grove, Banbridge, Stages 1 and 2
Upper Quilly Road, Dromore, Stage 1
Drumlin Grange, Moneyslane, Stages 1 and 2

Portadown Public Art, Stage 1
Lisnisky Lodge, Portadown, Stages 2-4
Churchill Gardens, Portadown, Stage 1
Foxes Hill, Lurgan Stages 6 and 7
Woodville Gate, Lurgan, Stages 1 and 2
Almac Portadown, Stages 1 and 2
Bowens Lane, Lurgan, Stages 1 and 2
Parkmore, Craigavon, Stage 1

During the reporting period from 1 April 2015 to mid September 2015, the following private developments were brought to adoption standard through enforcement action:

Castle Rise, Tandragee Stages 8-11
Annahugh Hill, Loughgall Stages 1 and 2
Oak Grove, Banbridge Stages 1 and 2
Drumlin Grange, Moneyslane Stages 1 and 2

6.4 PRIVATE STREETS: ENFORCEMENT

Private Streets Section continues to invoke enforcement proceedings against developers who fail in their responsibility to provide road bonds before commencement of work on site. This takes the form of a series of warning letters followed if necessary by enforcement action.

Private Streets Section continues to work with developers on backlog housing sites with the objective of having work completed to an adoptable standard.

Where it becomes evident that a developer is either no longer trading or is incapable or unwilling to complete the work, TransportNI will consider initiating enforcement action. This may result in the need for TransportNI to complete the works and recover the costs from the road bond under Articles 13 and 15 of the Private Streets Order 1980.

TransportNI is currently carrying out works on the following development sites through enforcement action:

Edenderry Drive, Artasooley Armagh- substantially complete
Limestone Square, Rock Road, Armagh - substantially complete
Oak Grove, Scarva Road Banbridge - substantially complete
Annaghugh Hill, Loughgall - substantially complete.
St Catherine's Court, Armagh
Velton Lawns, Laurelvale
Mossview, Waringstown - substantially complete
Ballyoran Manor, Portadown
Lyndale Manor, Kernan Road, Portadown - substantially complete
Belvedere, Kilmore Road, Lurgan
Roeshill, Lawrencetown, Banbridge
Oakridge, Castlewellan Road, Banbridge

Since 1 April 2015 TransportNI commenced works on the following development sites through enforcement action:

Pollock Mews, Lurgan
Belvedere, Kilmore Road, Lurgan
Kilcluney Road, Armagh
Mounthall Grange, The Birches, Portadown
Ashbridge, Kinallen.
Drumorgan Manor, Hamiltonsbawn.
Bannvale Mews, Armagh

It is currently anticipated that enforcement will be initiated during the 2015/16 reporting period in respect of:

Maynooth Manor, Maynooth Road, Richhill
Kilcluney Road, Armagh.
Castle Rise, Tandragee.
Drumorgan Manor, Hamiltonsbawn.
Lawrencevale, Lawrencetown, Banbridge.
Ashbridge, Kinallen.
Scarva Road factory entrance Banbridge.
Abbey Manor off Rectory Park, Lurgan.
Mounthall Grange, The Birches, Portadown.
Keelmount Grange, Scotch Street, Portadown.
Bachelors Avenue, Killicomaine Road, Portadown.

It is not anticipated that enforcement will be initiated in respect of any additional developments sites in the present financial year.

6.5 PRIVATE STREETS: PROPERTY CERTIFICATES

Private Streets Section coordinates the TransportNI response to Property Certificate Enquiries.

6.6 ABANDONMENTS

Abandonments of public rights-of-way such as sections of adopted roads and footways are procedures separate from the planning process. These involve a public consultation exercise which informs Transport NI's decision to approve or reject any application. During the reporting period (1 April 2014 to 31 March 2015), the following abandonments were actioned:

<u>Location</u>	<u>Operative Date</u>	<u>Length/Area</u>
Portadown Road, Richhill	3 December 2014	210 sq m (Road)
Armagh Road, Moy	11 February 2015	2345 sq m (Superseded Road)
Rowantree Road, Dromore	18 June 2014	1009.43 sq m (Road)
North Circular Road and Tarry Lane, Lurgan	4 June 2014	1693 sq m (Superseded Road)
Annesborough Road, Lurgan	7 May 2014	258 sq m (Road)