

1. Bellarena – Bishop’s Gate Greenway - Introduction

Welcome to the Engagement Event

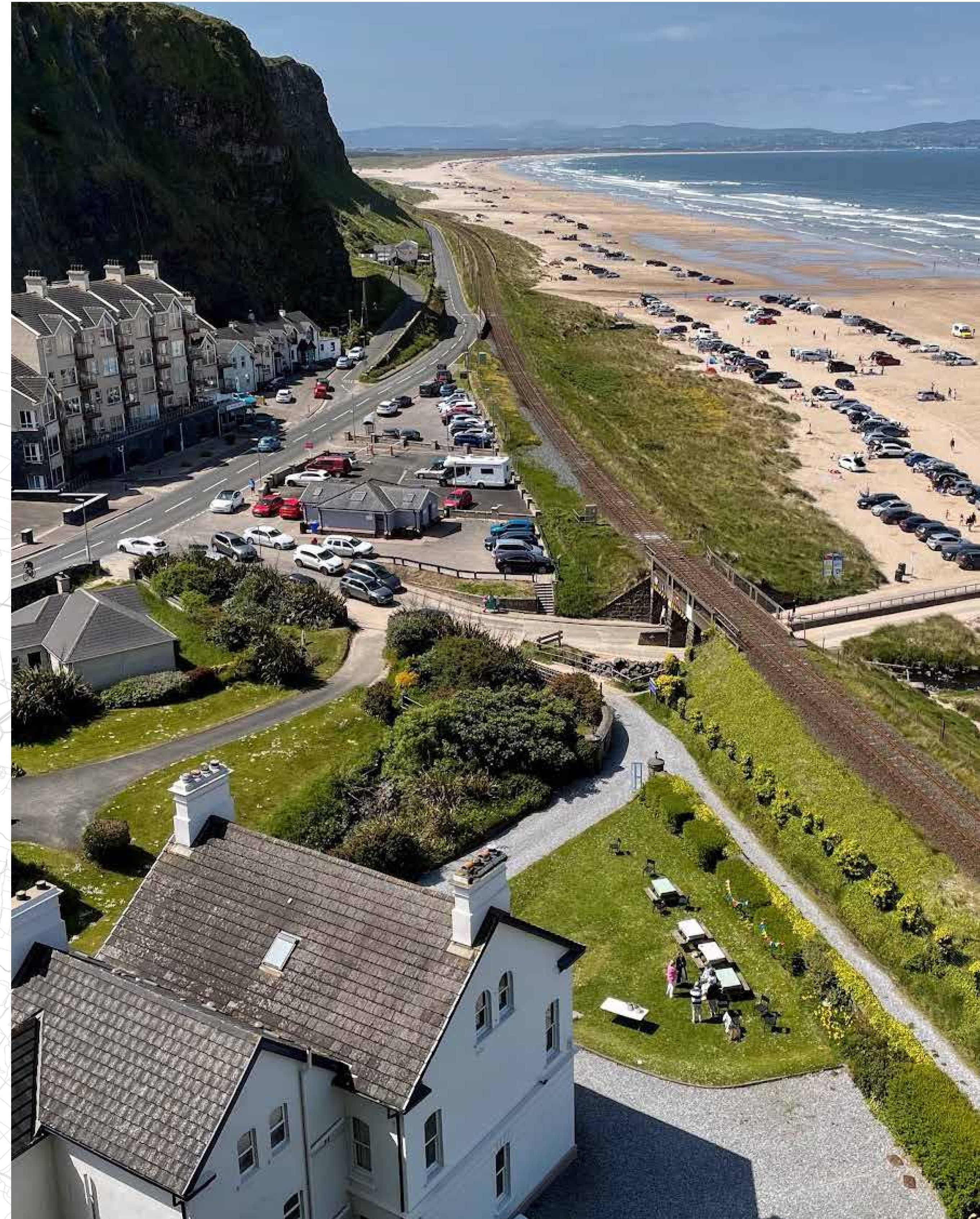
Tetra Tech (TT) on behalf of the Department for Infrastructure (DfI) are seeking your views on the proposed Bellarena-Bishop’s Gate Greenway which aims to provide new active travel connectivity between Swann’s Bridge and Bishop’s Gate.

The greenway aims to facilitate walking, wheeling and cycling opportunities for a range of purposes such as recreation and leisure in this stunning landscape setting, whilst enhancing the tourism offering of the area by connecting existing attractions, local amenities and supporting local businesses.

The purpose of this engagement event is to inform the local community of the project and invite comments to help inform the design and planning process.

The comments received from this event and the online consultation will then be used to assist the project team in developing potential options for connecting Bellarena with Bishop’s Gate with a greenway.

A second engagement event will then be held this summer to assist the project team in selecting a preferred option to bring forward for planning.



© Crown copyright and database right Land & Property Services (2025) NIMA

Have your say

The Department for Infrastructure values your comments. Please take time to view the information on display and complete the questionnaire provided. Representatives of the Project Team are available to explain the scheme and to answer your questions. Thank you.

Scan QR code



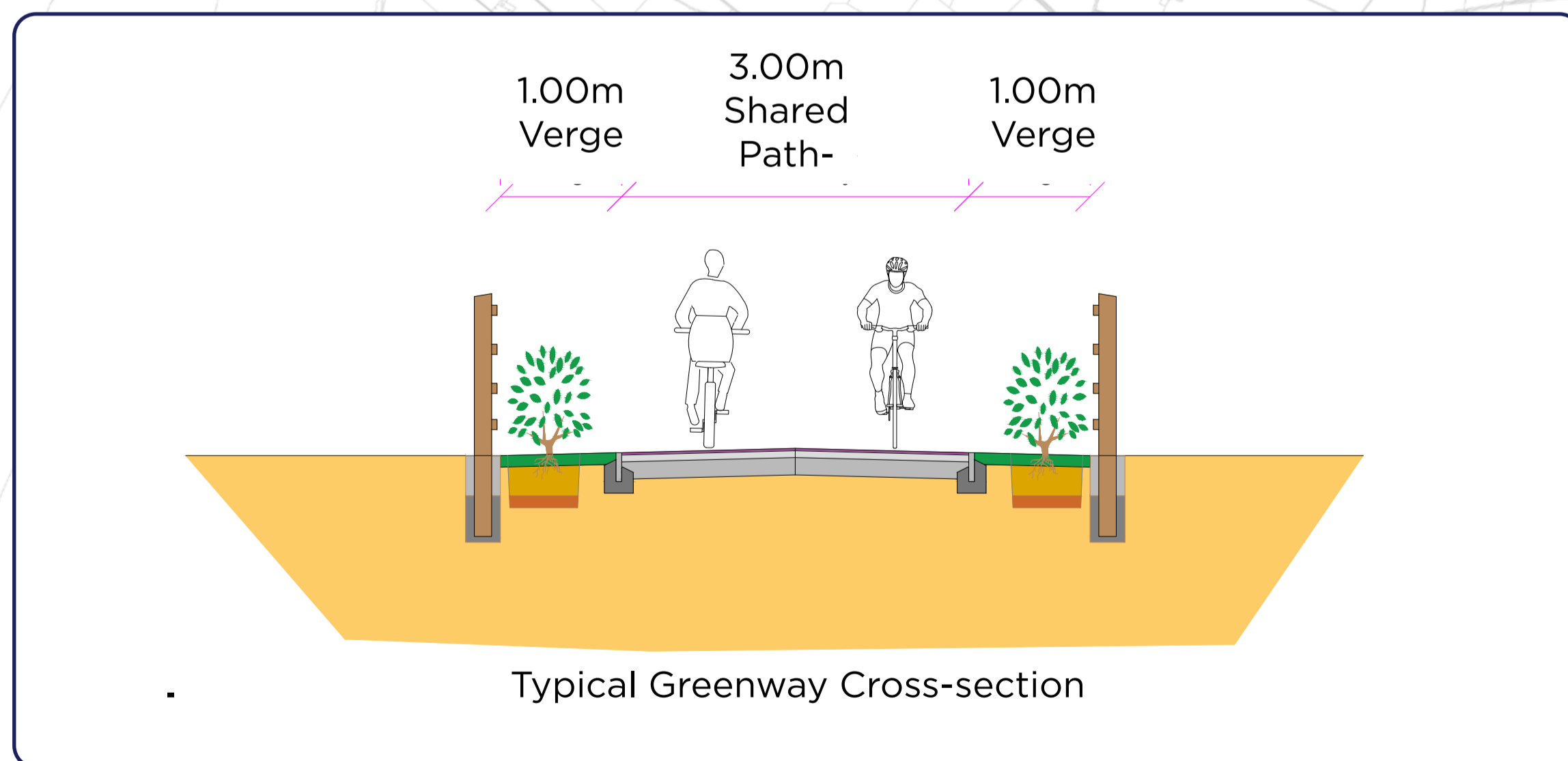
2. Bellarena – Bishop’s Gate Greenway



What is a Greenway?

A greenway is typically, a traffic-free, mostly off-road route designed for walking, wheeling and cycling. They act as green corridors connecting people and places, fostering active travel, leisure, health benefits, and environmental protection by often following rivers or old railway lines.

A greenway facilitating active travel can enhance our health, environment, economy and society, which can create healthier communities, a reduction in our environmental impact and the creation of more vibrant connected communities.



© Crown copyright and database right Land & Property Services (2025) NIMA

Have your say

The Department for Infrastructure values your comments. Please take time to view the information on display and complete the questionnaire provided. Representatives of the Project Team are available to explain the scheme and to answer your questions. Thank you.

Scan QR code



3. Bellarena – Bishop’s Gate Greenway - Objectives

Project Objectives

Five primary objectives have been developed for the Bellarena - Bishop’s Gate Greenway, taking into consideration both regional and local policies, such as the Climate Change Act (Northern Ireland) 2022, Exercise: Explore: Enjoy – A Strategic Plan for Greenways DfI (2016) and the Regional Development Strategy 2035.

The five objectives are:

- **The creation of an integrated sustainable transport network, providing links to Bellarena railway station, existing bus stops, Magilligan, Downhill and the existing active travel infrastructure network.**
- **To deliver a greenway that facilitates more environmentally friendly, sustainable travel options for commuting and recreation.**
- **To provide a high quality, attractive greenway that will improve journey quality and the environment for walkers, wheelers and cyclists.**
- **To support local economic growth in the Magilligan area by providing the new greenway and developing sustainable tourism in the area.**
- **To provide opportunities through the delivery of new infrastructure and behavioural change initiatives to improve the health and wellbeing of residents.**



© Crown copyright and database right Land & Property Services (2025) NIMA

Have your say

The Department for Infrastructure values your comments. Please take time to view the information on display and complete the questionnaire provided. Representatives of the Project Team are available to explain the scheme and to answer your questions. Thank you.



Scan QR code

4. Bellarena – Bishop’s Gate Greenway - Study Area

Following the drafting of project objectives, the project team have identified a Study Area which is shown on this board.

The study area spans across the Magilligan Peninsula, from Bishop’s Gate at its most eastern extent to the existing car park at Swann’s Bridge to the southwest. The area is bounded by Lough Foyle on its western boundary, the Atlantic Ocean on its northern boundary and the Antrim Plateau escarpment to the south.

The establishment of a study area has enabled the project team to identify constraints and opportunities which will help develop potential options to establish the greenway. Once each option has been appraised a preferred option will then be selected, whereupon a final alignment for the greenway will be designed, following further consultation and appraisal.

4. St Aidan’s Primary



5. Martello Tower



6. Devil’s Thumb



7. Swann’s Bridge



Legend

- You are here
- Landmark
- Start/ End of the scheme
- Study Area Boundary
- A2 Seacoast Road
- Existing Secondary Road
- Existing Railway Line

© Crown copyright and database right Land & Property Services (2025) NIMA

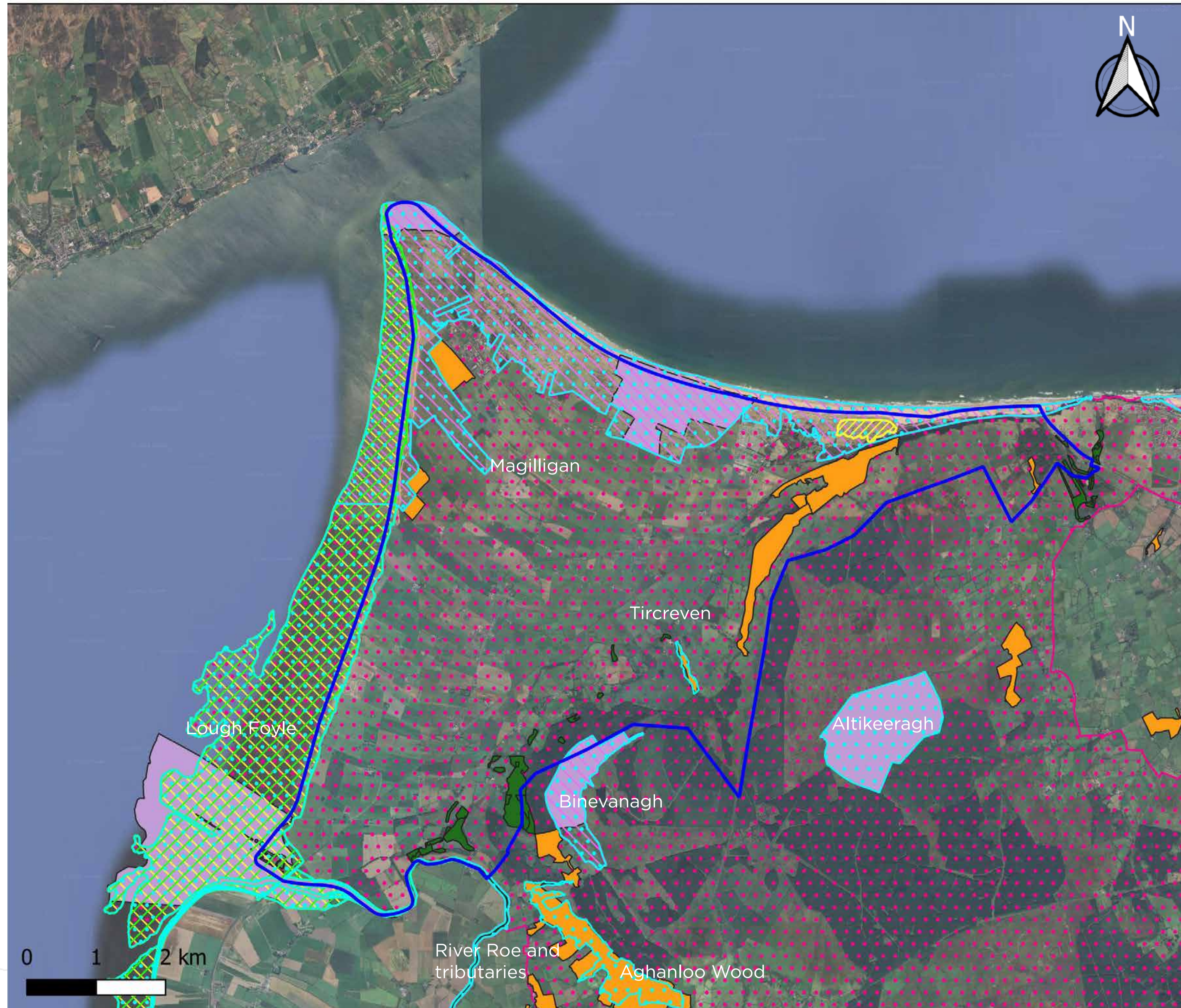
Have your say

The Department for Infrastructure values your comments. Please take time to view the information on display and complete the questionnaire provided. Representatives of the Project Team are available to explain the scheme and to answer your questions. Thank you.

Scan QR code



5. Bellarena – Bishop’s Gate Greenway - Environmental Constraints



Legend

- Study Area
- River
- Special Area of Conservation
- Special Protection Area
- Area of Special Scientific Interest
- Ramsar
- Ancient Woodland Inventory
- National Nature Reserve
- Sites of Local Nature Conservation Importance
- Umbra Nature Reserve
- Binevenagh AONB

Following identification of the project study area, the project team are now in the process of identifying a range of constraints and opportunities within the area, including environmental constraints, which will influence option appraisal, as outlined below.

Ecology – Extensive ecological surveys will be undertaken to identify locally important habitats and wildlife.



Landscape & Visual – The location within Binevenagh AONB will require sensitively located and designed proposals that aim to integrate into the surrounding landscape.



Cultural Heritage – There are a number of archaeological sites within the study area that will be carefully considered.



Water Environment – The Roe River and Lough Foyle are important water features. Sustainable drainage features will be considered to regulate any discharges.



Coastal Processes – Sand dunes are mobile features and potential effects, and beneficial management measures will be considered.



Land Use – The development of the scheme will seek to minimise property loss, land take and severance as far as possible.



© Crown copyright and database right Land & Property Services (2025) NIMA

Have your say

The Department for Infrastructure values your comments. Please take time to view the information on display and complete the questionnaire provided. Representatives of the Project Team are available to explain the scheme and to answer your questions. Thank you.

Scan QR code



6. Bellarena – Bishop’s Gate Greenway - What Happens Next

Your feedback will be considered by the project team to help and appraise potential greenway options within the study area. A report will then be prepared which will provide a detailed analysis of the constraints and opportunities for each greenway option. When this report has been prepared, further consultation will be undertaken to seek your views to help identify a preferred option.



© Crown copyright and database right Land & Property Services (2025) NIMA

Have your say

The Department for Infrastructure values your comments. Please take time to view the information on display and complete the questionnaire provided. Representatives of the Project Team are available to explain the scheme and to answer your questions. Thank you.

Scan QR code



7. Bellarena – Bishop’s Gate Greenway - Contact Information



DfI are undertaking this Community Engagement to seek the views of members of the public, local communities, stakeholders and other interested parties in relation to the Bellarena - Bishop’s Gate Greenway Project.

This community consultation will last for approximately 5 weeks from 11th March 2026 through to 11 April 2026.

DfI hope to understand any other issues or concerns anyone may have to help inform proposed option development and the environmental impact assessment process.

If I have a query or question, how can I have this addressed?

At the In-Person Public Engagement Event - Please speak to one of our representatives as they are here to assist you in understanding the project proposals.

Feedback Forms - We would welcome your views and comments on the project and invite you to submit your comments to our project team on the feedback forms provided at the in-person event or on the project website.

Feedback can be forwarded to the Project Team at any stage during the Public Engagement period from 11th March 2026 to 11th April 2026. Contact us via Email, Website, Telephone, or Letter. Contact details are set out below:



Email : activetravel@infrastructure-ni.gov.uk



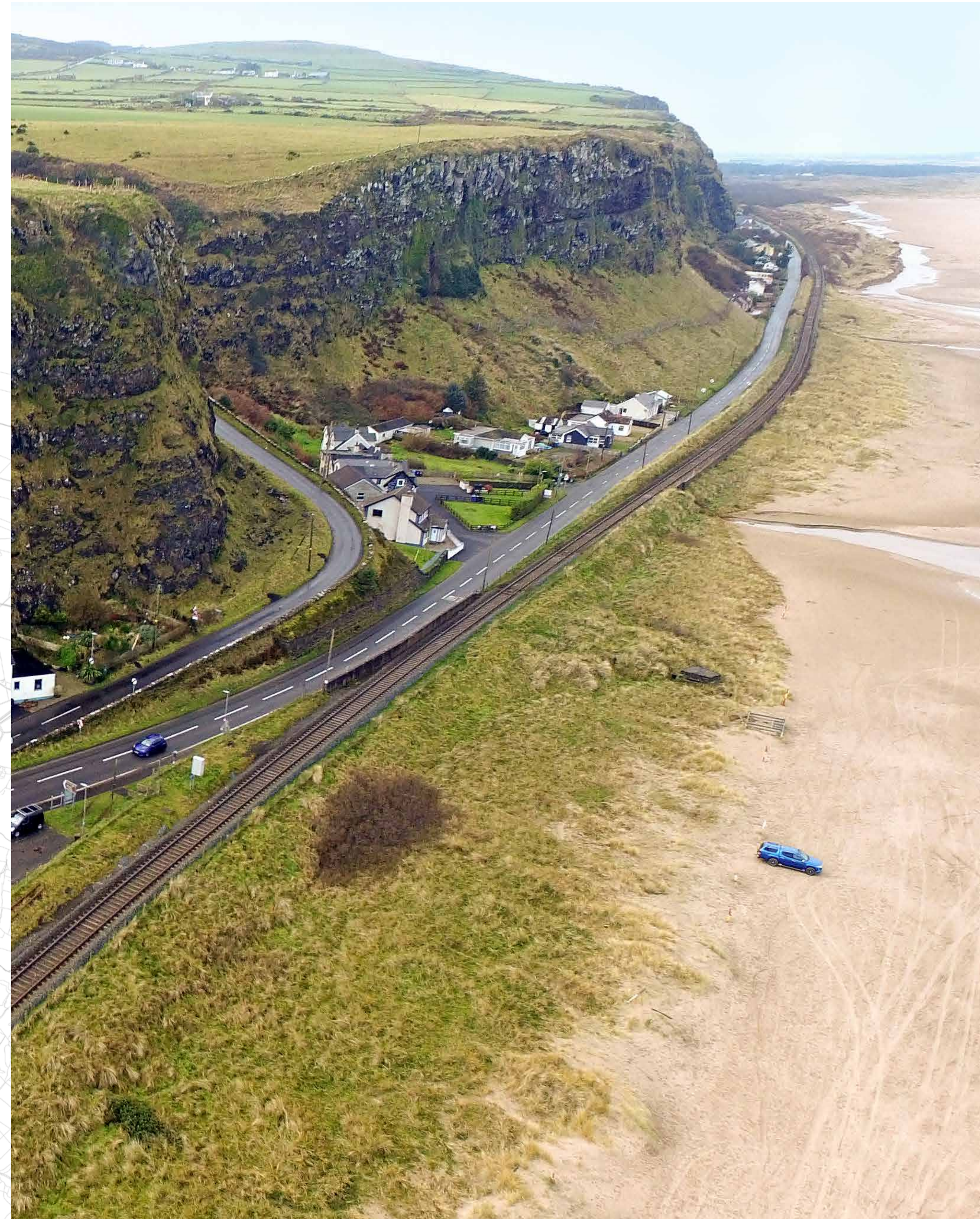
Tel : 028 9066 7914



Address : DfI Active Travel
County Hall,
Castlerock Road, Coleraine
BT51 3HS



Project Website: www.infrastructure-ni.gov.uk/consultations/bellarena-bishops-gate-greenway-early-engagement



© Crown copyright and database right Land & Property Services (2025) NIMA

Have your say

The Department for Infrastructure values your comments. Please take time to view the information on display and complete the questionnaire provided. Representatives of the Project Team are available to explain the scheme and to answer your questions. Thank you.



Scan QR code