

Traffic Signs Authorisation

The Department for Infrastructure(a), gives the following authorisation in exercise of the powers conferred by Article 28(2) of the Road Traffic Regulation (Northern Ireland) Order 1997(b) and now vested in it(c).

Interpretation

1. In this authorisation—

“the 1997 Regulations” means the Traffic Signs Regulations (Northern Ireland) 1997(d);

“sign” means the traffic sign shown in the diagram in the Schedule; and

“variable message sign” means a device which may display a legend shown in the diagram in the Schedule and varied in accordance with Article 7(1)(b)

Control of traffic by signs

2.—(1) The sign shown in the diagram in the Schedule is authorised for erection on a temporary trial basis for the purpose of indicating to vehicular traffic that lanes are closed to traffic ahead by vehicles carrying out mobile roadworks on the M22 and M2 motorways in both directions from M22 Junction 1 Dunsilly to M2 Junction 6 Rathbeg and their associated sliproads.

(2) The information indicated and conveyed by the sign shown in the diagram in the Schedule shall be that specified in or under the diagram.

Sign to be of the size, colour and type shown in the diagram in the Schedule

3.—(1) Subject to the provisions of this authorisation, the sign shall be of the size, colour and type shown in the diagram in the Schedule.

(2) Dimensions indicated in the diagram in the Schedule are expressed in millimetres.

Signs only to be used on mobile traffic management vehicles

4. The sign shown in the diagram in the Schedule shall only be used on mobile traffic management vehicles which are being used for mobile works, mobile lane closures, mobile carriageway closures or for emergency traffic management purposes.

Variation of dimensions

5. Any dimension specified in the sign shown in the diagram in the Schedule may be varied by up to 5% of that dimension.

(a) Formerly the Department for Regional Development; see section 1(6) and (11) of, and Schedule 1 to, the Departments Act (Northern Ireland) 2016 (2016 c. 5 (N.I.))

(b) S.I. 1997/276 (N.I. 2)

(c) S.R. 1999 No. 481 Article 6(d) and Schedule 4 Part IV

(d) S.R. 1997 No. 386

Proportions and form of letters and numerals

6. —(1) All letters and numerals incorporated in the sign shown in the diagram in the Schedule shall have the proportions and form as prescribed in Part II of Schedule 13 to the 1997 Regulations.

(2) When the sign shown in the diagram in the Schedule is varied in accordance with Article 7(1)(c) and the variable message sign displays a combination of lower-case letters, upper-case letters and numerals they shall have the proportions and form as prescribed in Part I of Schedule 13 to the 1997 Regulations.

(3) When the sign shown in the diagram in the Schedule is varied in accordance with Article 7(1)(c) and the variable message sign displays upper-case letters only and numerals they shall have the proportions and form as prescribed in Part V of Schedule 13 to the 1997 Regulations.

Permitted variants

7.—(1) Where the circumstances in which a sign is to be placed so requires or where appropriate in those circumstances, the form of the sign may be varied in the following manner—

- (a) the number of arrows and symbols indicating the number of lanes and those which are open or closed to traffic may be varied.
- (b) the legend “Ahead” may be varied to “On slip road” on two lines or a distance in yards to the nearest 50 yards.
- (c) the legend “Ahead” may be displayed on a variable message sign and varied in accordance with paragraph (b).

(2) Where the form of a sign is varied in accordance with this authorisation, the information conveyed to vehicular traffic by the sign is varied to accord with the form of the sign as varied.

Display of lamps

8. The four light roundels on the sign shall flash in horizontal pairs and each roundel shall show an intermittent light at a rate of flashing of not less than 60 nor more than 90 flashes per minute, and in such a manner that the lights of one horizontal pair are always shown when the lights of the other horizontal pair are not shown.

Illumination requirements

9.—(1) With the exception of the black panel incorporating the variable message sign when varied in accordance with Article 7(1)(c), the sign may be illuminated by means of internal or external lighting throughout the hours of darkness but if not so illuminated it shall be illuminated by the use of reflecting material in accordance with paragraphs (3) and (4).

(2) Where the sign is illuminated by means of external lighting, then that means of lighting shall be fitted to—

- (a) the sign; or
- (b) the structure on which the sign is mounted or which is otherwise specially provided.

(3) Where reflecting material is used on any part of the sign, all other parts of the sign shall also be illuminated by means of reflecting material.

(4) Reflecting materials shall be as specified in the UK Annex to BS EN 12899-1

Sign to be authorised on a temporary trial basis

10. The sign shown in the diagram in the Schedule shall be authorised for use for a period of 12 months from the date of this authorisation

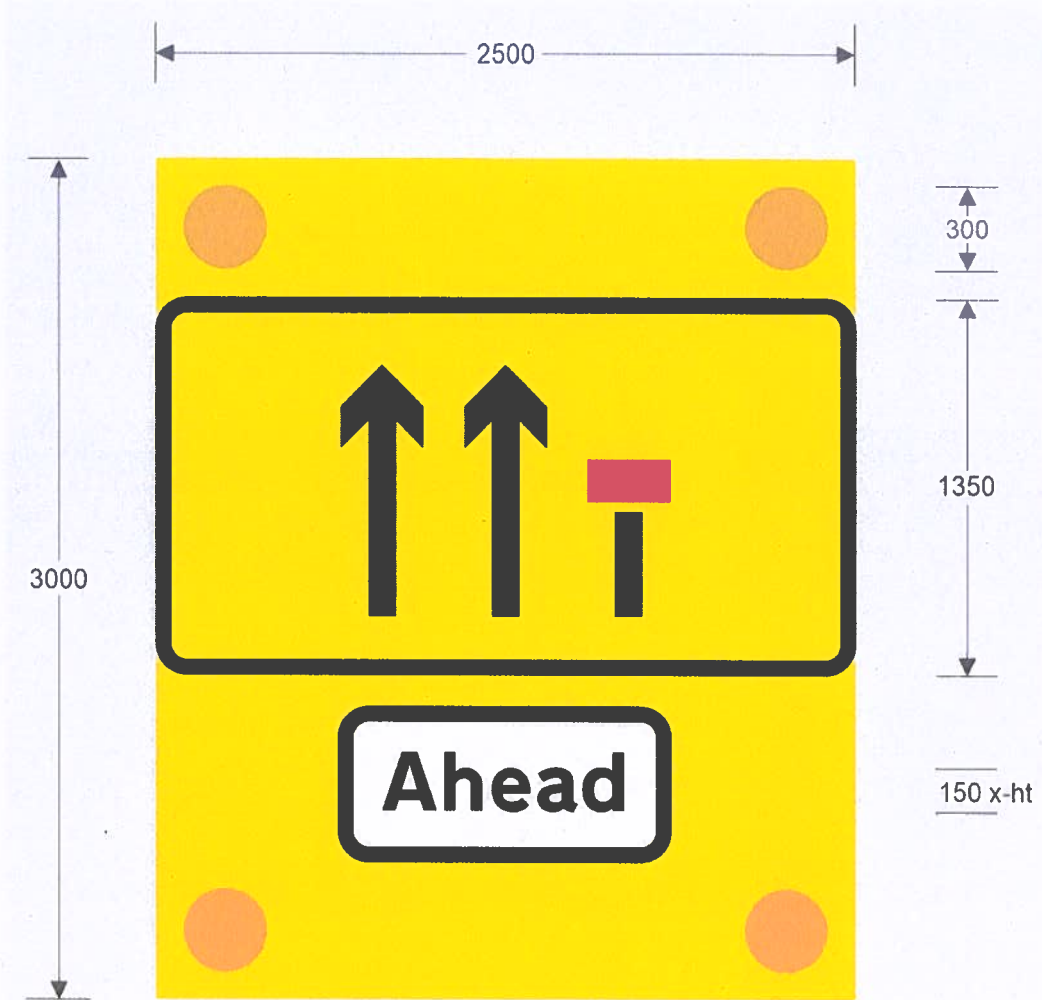
Authorised Officer:

Steph Hyl

Date:

24 / 07 / 2025

SCHEDULE



Lanes closed to traffic ahead by vehicles carrying out mobile roadworks