

# **Curraghinalt Project County Tyrone**

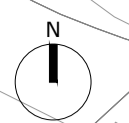
Prepared for Dalradian Gold Limited

**Environmental Statement - Volume 3**

**C17 Landscape and Landscape  
Restoration Plans**

November 2017

**DALRADIAN**  
**GOLD**



- KEY**
- SITE BOUNDARY
  - POND OUTLINE
  - DRY STACK FACILITY
  - 5 M CONTOURS
  - EARTHWORKS SLOPE
  - SERVICE DITCH
  - DRAINAGE DITCH
  - - - POND CONNECTION CULVERT
  - - - POND OVERSPILL CULVERT
  - RETAINING WALL
  - CONCRETE CULVERT
  - SECURITY FENCE
  - PEAT STORAGE

- VEGETATION RETAINED AND PROTECTED**
- EXISTING LINEAR CONIFER SHELTERBELT RETAINED
  - HEATHLAND AND FARMED AREAS TO BE RETAINED AND PROTECTED
  - EXISTING BROADLEAF HEDGEROW AND RIPARIAN VEGETATION TO BE RETAINED
  - TREE PROTECTION FENCING: Heras fencing panels with block tray stabilisers. To comply with BS 5837:2012

- PROPOSED PLANTING**
- WOODLAND AND SHRUB/UNDERSTOREY
  - DOUBLE HEDGEROW
  - ASH WOODLAND AND UNDERSTOREY
  - SEED MIX 1
  - SEED MIX 2

**Notes:**

- This drawing should be read in conjunction with Hoy Dorman drawing 2016021-P-CIV-004 General Site Layout and all other engineering drawings.
- Planting to comprise plant species of local provenance stock from Northern Ireland informed by site conditions, and the Design Guide for Rural Northern Ireland (1994). All tree and shrub planting to comply with BS3336 'Specification for trees and shrubs'.
- Proposed planting as shown in plan, when planting maintain a minimum distance of 3m from existing woodland, hedgerow vegetation and proposed landscape works (i.e. surface areas, roads, ponds, drainage, DSF etc.)
- All bare-rooted plants to be planted during the period November to April. Bare-rooted plants should be delivered with roots covered and kept moist, preferably in dark plastic bags. If planting is not possible straight away, bare-rooted plants to be stored on site within a sheltered, cool area, protected from sunlight and frost. If plants need to be stored on site for more than a few days, they should be 'heeled' into spare land with roots covered by soil.
- Bare-rooted plants to be notch planted to existing soil in a random pattern with no straight lines. Plants should be planted in single species groups of 5 - 10 plants. Immediately after planting trees, cut back any damaged, dead or diseased branches and remove weak, thin or malformed growth. Plant species, sizes, and planting density are in the Schedule: Proposed Planting.
- Proposed seed mixes to be hydroseeded and drawn from Germinall Seed mixes Acid Sub Mountain Restoration RE7 and Heath Scrubland RE11 as shown in the Schedule: Proposed Planting. Hydroseeding to be undertaken prior to species mix prime growing season.
- Progressive restoration of the Dry Stack Facility (DSF) will take place at appropriate times during operation in relation to engineers guidance. Hydroseeding to be undertaken with engineers guidance to ensure structural integrity of Dry Stack Facility Cap is maintained and not jeopardised.
- No vegetation greater than 0.25m within the sightlines and any planting of vegetation behind the sightlines should ensure it will not extend into the sightlines. Sightline clearance to be checked during maintenance schedule.

Peat storage in accordance with BS 4428:1989 'Code of Practice for General Landscape Operations' and NIEA (2012) Advice Note Active Peatland and PPS18.

Peat storage in accordance with BS 4428:1989 'Code of Practice for General Landscape Operations' and NIEA (2012) Advice Note Active Peatland and PPS18.

Progressive restoration of the Dry Stack Facility (DSF) will take place at appropriate times during operation in relation to engineers guidance. Proposed use of Seed Mix 2 as shown in Schedule: Proposed Planting. Hydroseeding to be undertaken with engineers guidance to ensure structural integrity of the Dry Stack Facility Cap is maintained and not jeopardised.

Proposed screen planting west of the Water Treatment Plant. Plant species as shown in Schedule: Proposed Planting, Woodland and Shrub/Understorey.

Proposed supplementary hedgerow planting along existing field boundaries to reinforce existing vegetation, as part of habitat enhancement for bats. Planting as shown in the Schedule: Proposed Planting, Double Hedgerow.

Proposed planting north of Crockanboy Road, plant species as shown in the Schedule: Proposed Planting, Double Hedgerow. No vegetation greater than 0.25m within the sightlines and any planting of vegetation behind the sightlines should ensure it will not extend into the sightlines. Sightline clearance to be checked during maintenance schedule. Reinforce existing vegetation where applicable on site.

Existing vegetation and habitat retained and protected.

Proposed Planting of Ash Woodland and Understorey species to reinforce existing vegetation adjacent to Pollanroe Burn as shown in Schedule: Proposed Planting, Ash Woodland and Understorey.

Proposed Planting of Ash Woodland and Understorey species to reinforce existing vegetation adjacent to Pollanroe Burn as shown in Schedule: Proposed Planting, Ash Woodland and Understorey.

**Schedule: Proposed Planting**

Species	No. Mix	Height	Root Condition	Density	
<b>Woodland</b>					
<i>Sorbus aucuparia</i>	Rowan	15	40-60cm	Bare root	1 per 2m <sup>2</sup>
<i>Sorbus aria</i>	Whitebeam	15	40-60cm	Bare root	1 per 2m <sup>2</sup>
<i>Ulmus glabra</i>	Wych Elm	10	40-60cm	Bare root	1 per 2m <sup>2</sup>
<i>Prunus avium</i>	Wild Cherry	10	40-60cm	Bare root	1 per 2m <sup>2</sup>
<i>Ilex aquifolium</i>	Common Holly	5	40-60cm	3L Pot	1 per 2m <sup>2</sup>
<b>Shrub/Understorey</b>					
<i>Calluna vulgaris</i>	Heather	5	40-60cm	Bare root	1 per 2m <sup>2</sup>
<i>Corylus avellana</i>	Hazel	10	40-60cm	Bare root	1 per 2m <sup>2</sup>
<i>Empetrum nigrum</i>	Crowberry	5	40-60cm	Bare root	1 per 2m <sup>2</sup>
<i>Lonicera periclymenum</i>	Honeysuckle	5	40-60cm	Bare root	1 per 2m <sup>2</sup>
<i>Myrica gale</i>	Bog Myrtle	5	10-20cm	3L Pot	1 per 2m <sup>2</sup>
<i>Vaccinium myrtillus</i>	Bilberry	5	10-20cm	3L Pot	1 per 2m <sup>2</sup>
<i>Viburnum opulus</i>	Guelder Rose	10	40-60cm	3L Pot	1 per 2m <sup>2</sup>
<b>Total</b>					100%

Species	No. Mix	Height	Root Condition	Density	
<b>Double Hedgerow</b>					
<i>Cotoneaster monagensis</i>	Hawthorn	50	40-60cm	Bare root	Plant in staggered double row 1 per 90cm apart.
<i>Prunus spinosa</i>	Blackthorn	10	40-60cm	Bare root	
<i>Corylus avellana</i>	Hazel	10	40-60cm	Bare root	
<i>Sorbus aucuparia</i>	Rowan	10	40-60cm	Bare root	
<i>Actinidia pubescens</i>	Downy Birch	10	40-60cm	Bare root	
<i>Malus sylvestris</i>	Crab Apple	5	40-60cm	Bare root	
<i>Lonicera periclymenum</i>	Honeysuckle	5	40-60cm	Bare root	
<b>Total</b>					100%

Species	No. Mix	Height	Root Condition	Density	
<b>Ash Woodland</b>					
<i>Fraxinus excelsior</i>	Ash	40	40-60cm	Bare root	1 per 2m <sup>2</sup>
<i>Sorbus aucuparia</i>	Rowan	25	40-60cm	Bare root	
<i>Betula pubescens</i>	Downy Birch	25	40-60cm	Bare root	
<i>Salix caprea</i>	Willow	10	40-60cm	Bare root	
<b>Total</b>					100%
<b>Ash Woodland Understorey</b>					
<i>Asterium nemorosum</i>	Wood Anemone	35	Bulb	Bulb	10 per 2m <sup>2</sup>
<i>Flycatcher non-aequalis</i>	Blue Bell	35	Bulb	Bulb	
<i>Allium ursinum</i>	Wild Garlic	30	Bulb	Bulb	
<b>Total</b>					100%

Species	No. Mix	Height	Root Condition	Density	
<b>Seed Mix 1 - RE11 Heath Scrub Land</b>					
<i>Festuca ovina</i>	Sheeps Fescue	50	n/a	seed	Sowing Rate 5g/m <sup>2</sup>
<i>Festuca rubra ssp. botanalis</i>	Slaender Creeping Red Fescue	25	n/a	seed	
<i>Dactylis glomerata</i>	Wavy Hair-Grass	15	n/a	seed	
<i>Agrostis capillaris</i>	Brown-top Bent	5	n/a	seed	
<i>Anthoxanthum odoratum</i>	Sweet Vernal	5	n/a	seed	
<b>Total</b>					100%

Species	No. Mix	Height	Root Condition	Density	
<b>Seed Mix 2 - RE 7 Acid Sub Mountain Restoration</b>					
<i>Festuca ovina</i>	Sheeps Fescue	30	n/a	seed	Sowing Rate 5g/m <sup>2</sup>
<i>Festuca rubra</i>	Slaender Creeping Red Fescue	25	n/a	seed	
<i>Cymodocea octocladis</i>	Coastal Dogstail	6.5	n/a	seed	
<i>Agrostis capillaris</i>	Brown-top Bent	7	n/a	seed	
<i>Holcus lanatus</i>	Yorkshire Fog	7	n/a	seed	
<i>Poa pratensis</i>	Smooth Stalked Meadow Grass	7	n/a	seed	
<i>Galium verum</i>	Lady's Bedstraw	3	n/a	seed	
<i>Anthoxanthum odoratum</i>	Sweet Vernal	2.5	n/a	seed	
<i>Plantago lanceolata</i>	Ribwort Plantain	2	n/a	seed	
<i>Ranunculus acris</i>	Meadow Buttercup	2	n/a	seed	
<i>Ranunculus repens</i>	Creeping Buttercup	2	n/a	seed	
<i>Geranium robertianum</i>	Common Stork	2	n/a	seed	
<i>Trifolium repens</i>	White Clover	2	n/a	seed	
<i>Actinobolus medium</i>	Yarrow	1	n/a	seed	
<i>Briza media</i>	Quaking Grass	1	n/a	seed	
<i>Calluna vulgaris</i>	Heather	1	n/a	seed	
<i>Prunella vulgaris</i>	Self-heal	1	n/a	seed	
<i>Compositum majus</i>	Pignut	0.5	n/a	seed	
<i>Lactuca consolida</i>	Birdfoot Trefoil	0.4	n/a	seed	
<i>Galium saxatile</i>	Heath Bedstraw	0.1	n/a	seed	
<b>Total</b>					100%

**Planting Maintenance Schedule**

Activity	Jan	Feb	Mar	Apr	May	Jun	Jul	Aug	Sep	Oct	Nov	Dec
<b>Broadleaf Woodland Planting</b>												
Watering as required												
Prune as required												
Spot control of weed growth by hand												
Replacement of failed plants as required												
Firm up trees and check stakes and ties												
After 2 years remove tree stakes												
Check security of tree protection												

**LUC** 37 Otago Street  
Glasgow, G12 8JY  
T: 0141 334 9595  
F: 0141 334 7789  
glasgow@landuse.co.uk  
www.landuse.co.uk

Project: Curraghinalt Project  
County Tyrone  
Northern Ireland

Client: Dalradian Gold Limited

Title: Landscape Plan

Scale: A1 1:3000 Status: Issue C

Job No. 6335 Drawing No. 6335\_002 Issue C

Do not scale from this drawing  
© Drawing & Design Copyright of LUC