

## **APPENDIX 7.6 PRELIMINARY ROOST ASSESSMENT & PRF INSPECTION SURVEY BATS**

---

*THIS PAGE IS INTENTIONALLY BLANK*

## **APPENDIX 7.6**

### **PRELIMINARY ROOST ASSESSMENT OF TREES & POTENTIAL ROOST FEATURE INSPECTION SURVEYS**

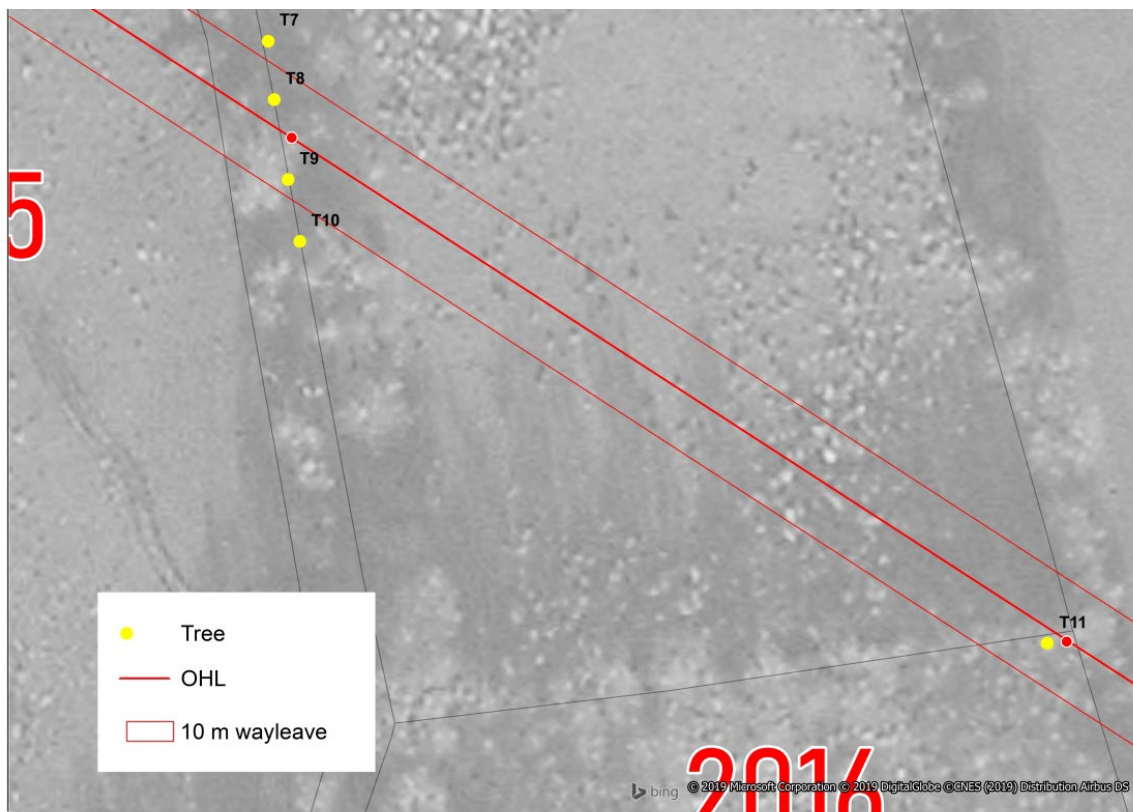
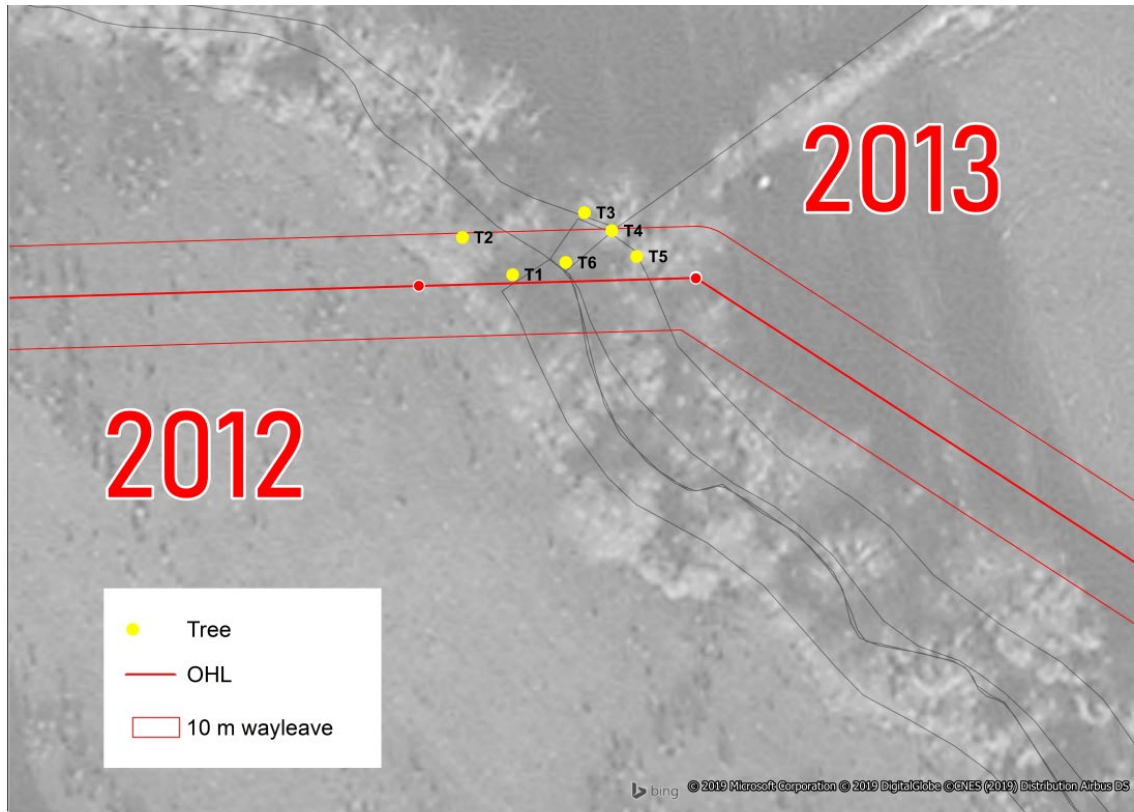
**Table 1: Results of Preliminary Roost Assessment for Trees and PRF Inspection Surveys**

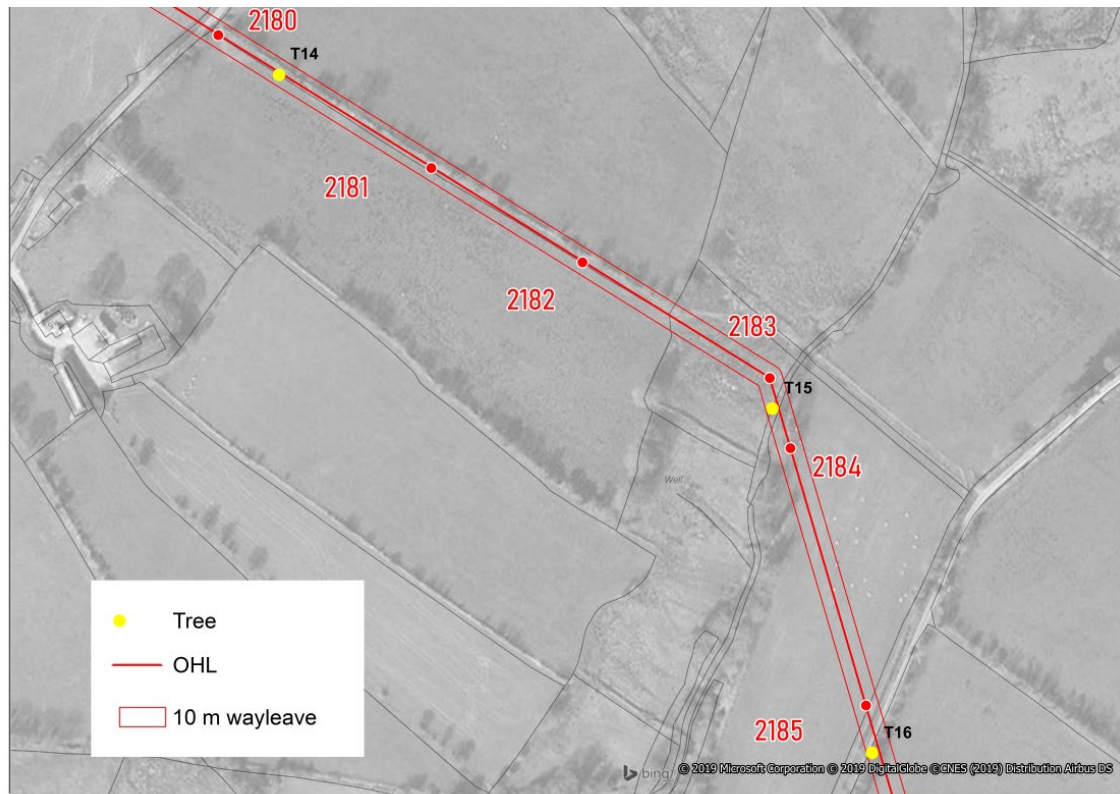
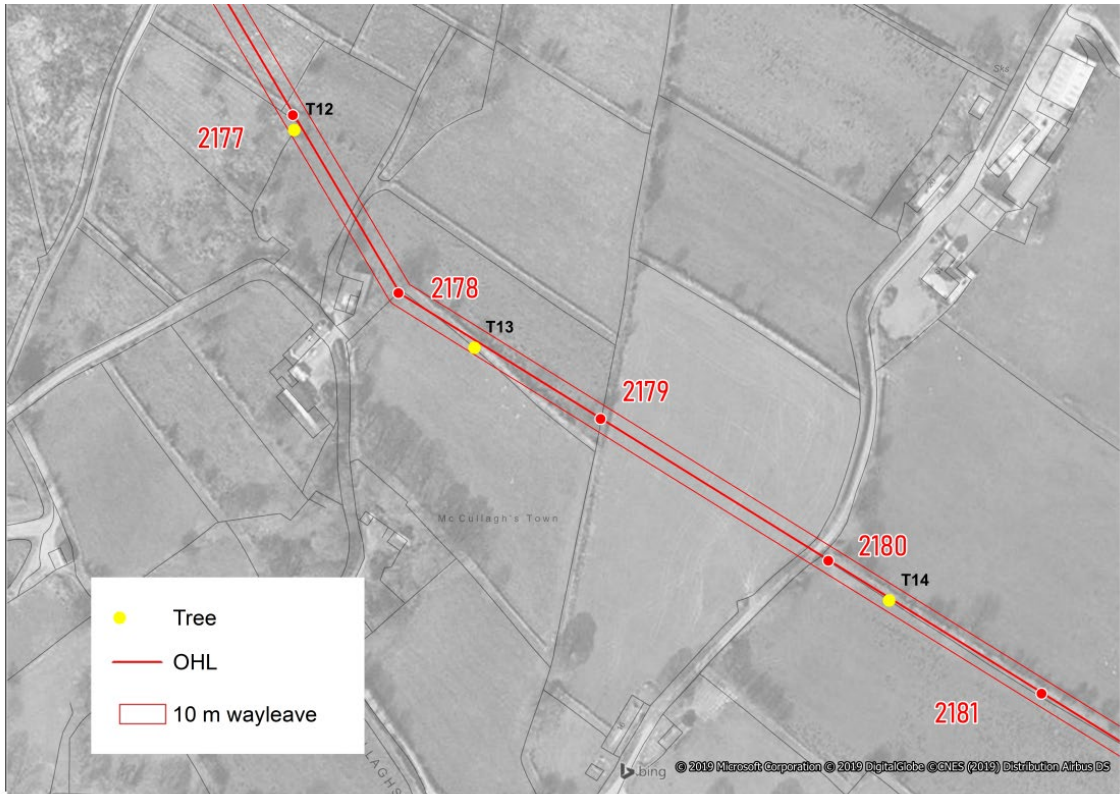
Pole No.	Tree No.	Tree Species	Description of PRFs	Ground Level Roost Suitability	PRF Inspection Roost Suitability	Evidence of Bats
2012 to 2013	T1	Common Alder	Ivy stems and branches	Low	Low	No
2012 to 2013	T2	Wych Elm	Ivy stems and branches	Low	Low	No
2012 to 2013	T3	Ash	Ivy stems and branches	Low	Low	No
2012 to 2013	T4	Ash	Ivy stems and branches	Low	Low	No
2012 to 2013	T5	Ash	Ivy stems and branches	Low	Low	No
2012 to 2013	T6	Common Alder	Ivy stems and branches	Low	Low	No
2015	T7	Common Birch	Sufficient size/age to contain PRFs - none seen from the ground	Low	Low	No
2015	T8	Common Birch	Sufficient size/age to contain PRFs - none seen from the ground	Low	Low	No
2015	T9	Common Birch	Ivy stems and branches	Low	Low	No
2015	T10	Common Birch	Ivy stems and branches	Low	Low	No
2016	T11	Common Birch	Sufficient size/age to contain PRFs - none seen from the ground	Low	Negligible	No
2177	T12	Rowan	Two knot holes the first 1m from base of tree. Heartwood decay.	Moderate	Moderate	No
2178 to 2179	T13	Rowan	Rotting limbs and peeling bark. Cavity.	Moderate	Negligible	No
2180 to 2181	T14	Rowan	Large cavity 1 m from base of tree.	Moderate	Moderate	No
2183 to 2184	T15	Ash	Appressed ivy. Part decaying. Potential PRFs - none seen from the ground. The most significant of three aligned ash dead or dying.	Low	Low	No
2185	T16	Ash	Ivy stems and branches.	Low	Low	No
2186	T17	Ash	Ivy stems and branches on the boundary of the 10m wayleave corridor	Low	Low	No
2186	T18	Ash	Mature ash with ivy. Upper branches leaning into wayleave. Potential PRFs - none seen from the ground.	Low	Low	No
2187	T19	Common Alder	Mature alder with ivy. Potential PRFs - none seen from the ground	Low	Low	No
2188	T20	Rowan	Ivy stems and branches. Potential PRFs - none seen from the ground	Low	Low	No
2188	T21	Unknown	Tree stump entirely covered with ivy	Low	Low	No

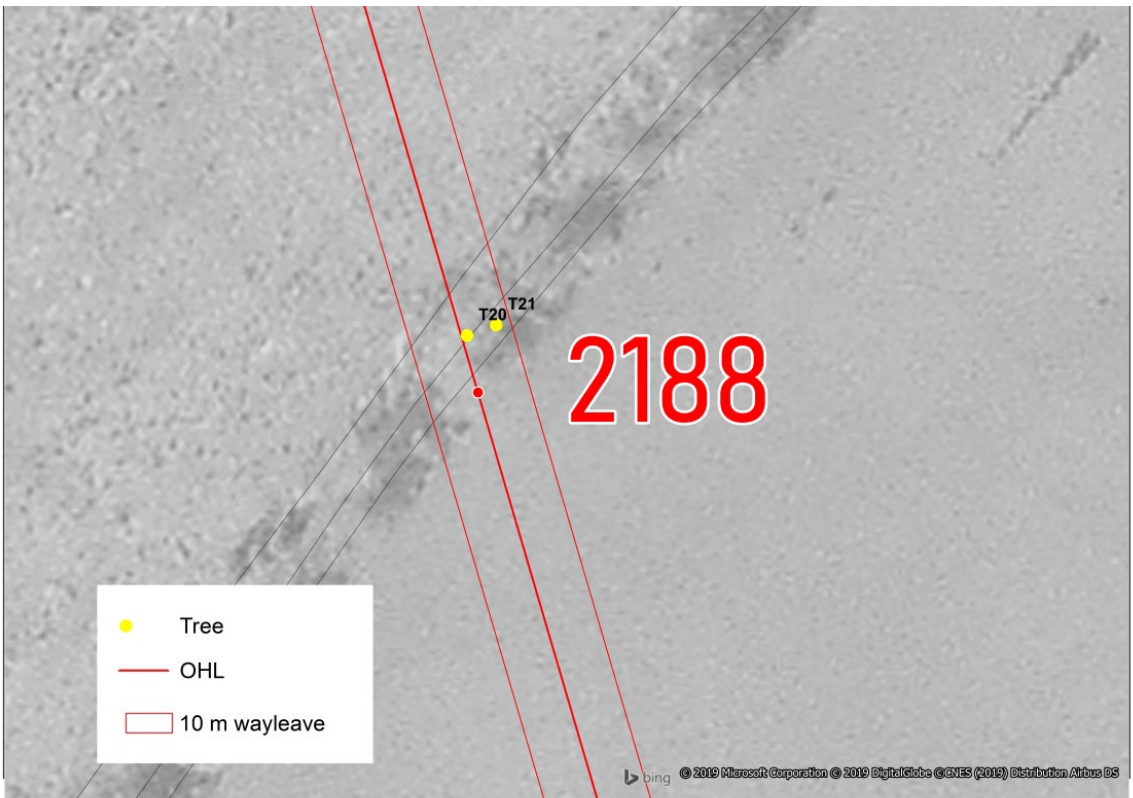
Pole No.	Tree No.	Tree Species	Description of PRFs	Ground Level Roost Suitability	PRF Inspection Roost Suitability	Evidence of Bats
2191 to 2193	T22	Ash	A mature ash with knot holes	Low	Moderate	No
2195 to 2196	T23	Ash	Mature ash with splitting bark, possible frost crack. Tree on boundary of the 10m wayleave corridor.	Moderate	Negligible	No
2238 to 2239	T24	Pine & spruce	Naturally peeling bark on multiple trees	Low	Low	No
2250 to 2251	T25	Common Alder	Bulbous canker at 4m.	Low	Negligible	No
2250 to 2251	T26	Common Birch	Longitudinal split / tear-out	Moderate	Negligible	No
2258	T27	Common Alder	Sufficient size/age to contain PRFs - none seen from the ground. Edge of wayleave corridor.	Low	Low	No
2259	T28	Rowan	But rot. 1.5m vertical opening with exposed interior cavity extending up the tree.	Moderate	Moderate	No
2267 to 2268	T29	Rowan	Rowan growing through Holly. Small knot hole circa 3m up main trunk	Moderate	Moderate	No
2268 to 2269	T30	Ash	Ivy cover and small decay feature on main bole.	Low	Negligible	No
2271	T31	Ash	Rotting limb with potential access and pruning-cut at 2m	Low	Moderate	No
2278	T32	Ash	Sufficient size/age to contain PRFs - none seen from the ground.	Low	Negligible	No
2278	T33	Ash	Sufficient size/age to contain PRFs - none seen from the ground.	Low	Negligible	No
2278	T34	Ash	Sufficient size/age to contain PRFs - none seen from the ground.	Low	Negligible	No
2280 to 2281	T35	Alder	Sufficient size/age to contain PRFs - none seen from the ground.	Low	Low	No
2280 to 2281	T36	Alder	Second alder (with holly) in same boundary on edge of the wayleave corridor. Sufficient size/age to contain PRFs - none seen from the ground.	Low	Low	No
2281	T37	Alder	At pole. Cavity at 1m. Some decaying limbs providing possible voids for bats	Low	Moderate	No
2281	T38	Willow	Tree on edge of the wayleave corridor. Cavity at 1.3m extending circa 45cm	Moderate	Moderate	No
2283	T39	Willow	Part fallen fractured willow	Low	Negligible	No
2283	T40	Willow	Second willow – relatively shallow cavity with some future potential	Low	Moderate	No

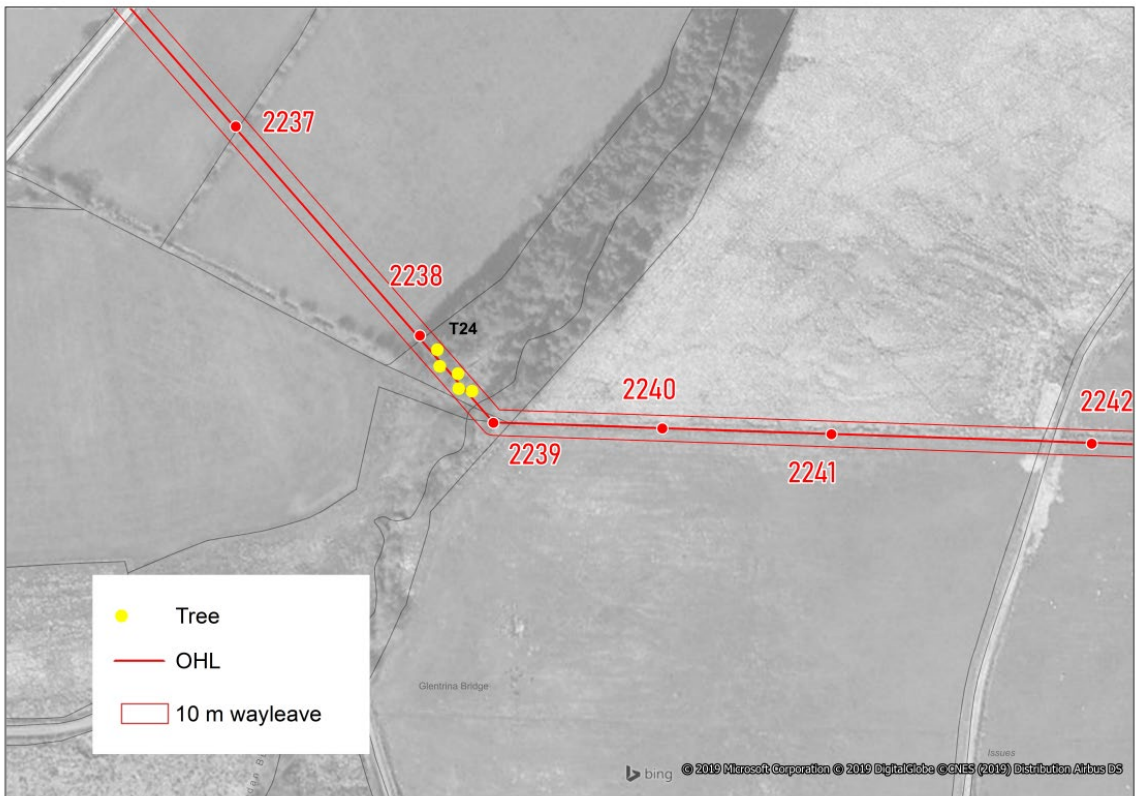
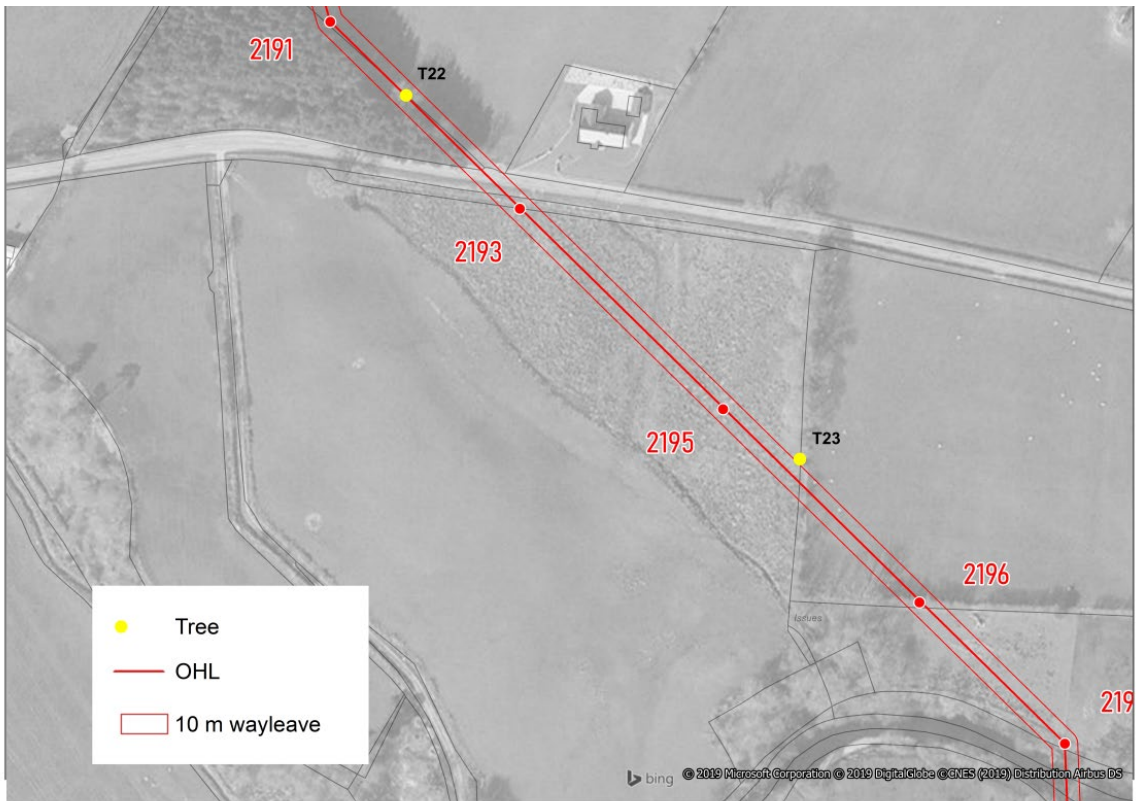
Pole No.	Tree No.	Tree Species	Description of PRFs	Ground Level Roost Suitability	PRF Inspection Roost Suitability	Evidence of Bats
2283	T41	Common Birch	Tear-out with upward facing cavity	Moderate	Negligible	No
2283	T42	Common Birch	Vertical wound with future use and knot hole with limited potential	Moderate	Moderate	No
2283	T43	Common Birch	Large suitable cavities.	Moderate	Moderate	No
2284	T44	Common Birch	Single tubular entry point into heartwood on leading branch	Low	Moderate	No

## Location of Pole Structures and Trees with Bat Roost Suitability









Note: Tree 24 represents multiple pine and spruce within and along the wayleave boundary

