

Curraghinalt Project County Tyrone

Prepared for Dalradian Gold Limited

Environmental Statement - Volume 3

C11 Socio-economic Baseline Report

November 2017

DALRADIAN
GOLD



**SOCIO-ECONOMIC BASELINE STUDY
FOR THE CURRAGHINALT GOLD
PROJECT, COUNTY TYRONE,
NORTHERN IRELAND**

October 2017

Our Ref: Q60106

Contents

1	INTRODUCTION	2
2	METHODOLOGY & CONTEXT.....	5
3	DEMOGRAPHIC AND COMMUNITY PROFILE.....	10
4	ECONOMIC PROFILE.....	29
5	TOURISM AND RECREATION	39
	APPENDIX 1:.....	44

Glossary of Acronyms

AONB - Area of Outstanding Natural Beauty

DGL – Dalradian Gold Limited

EIA – Equalities Impact Assessment

LGD – Local Government District

NI – Northern Ireland

NIMDM 2010 – Northern Ireland Multiple Deprivation Measure 2010

NSSeC – National Statistics Socio-Economic Classification

SOA – Super Output Area (aka LSOA – Lower Super Output Area)

1 INTRODUCTION

a) Project Context

- 1.1 Dalradian Gold Ltd (DGL) is at the Planning Application stage of their proposed mine development in Fermanagh and Omagh Local Government District (Fermanagh and Omagh District Council, FODC) in County Tyrone, Northern Ireland. The project is known as the Curraghinalt Project (hereafter, “the Project”). DGL has commissioned this Socio-Economic Baseline Study to inform the proposals and provide a baseline against which to assess any potential social or economic effects.
- 1.2 SRK has been commissioned to undertake an Environmental Impact Assessment (EIA) of the proposed mine. This Socio-Economic Baseline Study will establish the potential sensitive receptors which could be affected by socio-economic impacts generated by the Project. Socio-Economic receptors may also relate to other disciplines being assessed in the EIA. For example, the residential population identified as a receptor in this Study will also be the receptor for other environmental effects such as noise, visual impact etc.
- 1.3 A local study area of Owenkillew Ward (which is also equivalent to Owenkillew Super Output Area (SOA) and can be used interchangeably) has been chosen by Quod. This local area has been chosen on the basis that it covers the widest potential extent of the other likely significant environmental effects that could interact with socio-economic effects.
- 1.4 Owenkillew SOA completely covers the extent of the Project Area (the collective term for the Project Sites and the surrounding land). This includes all of the five proposed Project Sites, which are:
- The proposed infrastructure site (Area A)
 - The proposed mineral extraction area (Area B)
 - The existing surface infrastructure site (Area C)
 - The passing bays along the Camcosy Road (Area D)
 - The proposed mineral exploration area (Area E).

- 1.5 Figures for Northern Ireland, FODC, as well as aggregated data for SOAs directly adjoining the Owenkillew SOA (the surrounding SOAs) are also presented here as some socio-economic effects (employment for example) are likely to extend beyond the local area of Owenkillew SOA.
- 1.6 For the purpose of some elements of this Socio-Economic Baseline Study, the centre of the Proposed Infrastructure Site (Area A) has also been used as a point from which measurements of distance have been made (for example, residential homes that are within 2km of the centre of the Proposed Infrastructure Site (Area A)).
- 1.7 This Socio-Economic Baseline Study presents the existing characteristics of the area around the Project Sites with a focus on: demographics of local residents; issues arising from local land tenure (specifically Turbary Rights); local services and facilities; local businesses and the existing leisure, recreation and tourism economy.
- 1.8 In 2011, Dalradian commissioned SLR Consulting Ltd (SLR) to undertake an Environmental Baseline Study which focused on the socio-economic baseline conditions. This was one of a suite of studies undertaken by SLR to support the underground exploration programme. This report, commissioned in 2016 updates this work. Much of the data presented by SLR has not been superseded. For example, in many cases the 2011 Census is the most recently available data source for social and economic characteristics and this data was used in the SLR baseline study. Where this is the case, SLR's data has been presented in this report. Where more up-to-date or additional data is available Quod has provided it.

b) Structure of this Report

- 1.9 This Socio-economic baseline covers the following topics:
- *Section 2: Methodology and Context* sets out the spatial context considered within this baseline assessment, as well as the methods of data collection used.
 - *Section 3: Demographic and Community Profile* looks at the population profile of the Owenkillew SOA and surrounding areas including population growth; age profile; ethnicity and religious observance; and education and skills. It sets out homes and community facilities that are within the local area.



- *Section 4: Economic Profile* looks at the economic activity of local residents; their occupations, skills, qualifications and socio-economic classification; and existing local businesses.
- *Section 5: Leisure and Tourism* looks at the tourist attractions in the Owenkillew SOA, including leisure facilities that may be used by local residents and tourists alike. It sets out the baseline of local businesses that might be dependent on tourists, including tourist accommodation.

2 METHODOLOGY & CONTEXT

a) Project Area Context

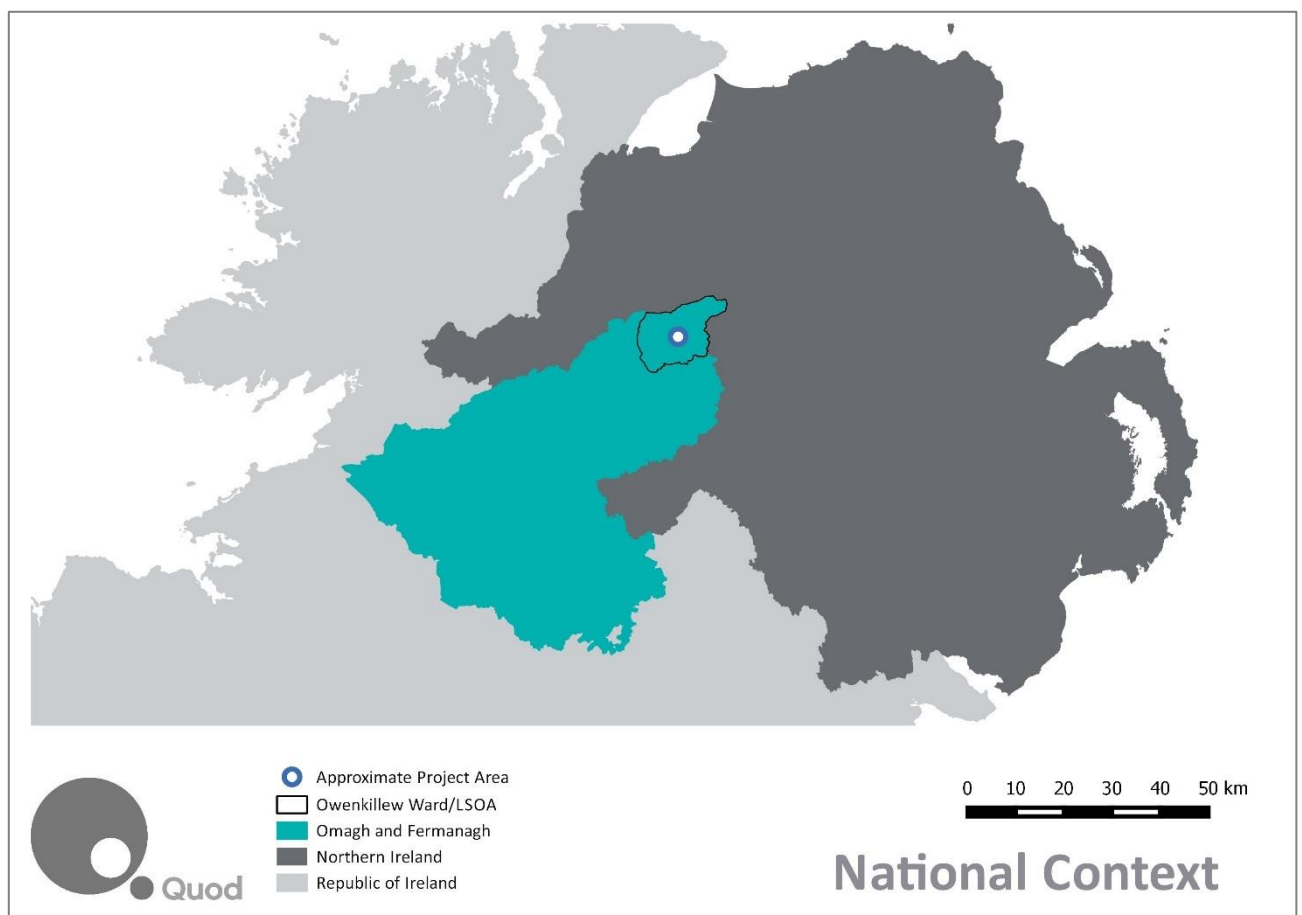
- 2.1 The location of the Curraghinalt Project is illustrated on Figure 2.1 and Figure 2.2 (hereafter referred to as “the Project”). The Project is located in FODC, County of Tyrone, Northern Ireland. The LGD was established in April 2015 when the separate district councils of Fermanagh and Omagh were merged.
- 2.2 The Project is on a ridge that forms the divide between the Owenkillew and Owenreagh Rivers. This area is defined topographically by its location in the Sperrins Mountains and is sparsely populated and rural in nature. The Project Area comprises a mixture of agricultural ground, moorland and small pockets of woodland. There is currently a former holiday let cottage located within the Project Area. This is now owned by DGL and is no longer in use. This Project Area also includes some disused farm structures. The Pollanroe Burn runs through the Project Area, the Owenkillew River to the north and the Owenreagh River to the south. The Project Area is located within the Sperrins Area of Outstanding Natural Beauty (AONB).
- 2.3 The Project Area is between the larger settlements of Omagh, Strabane and Cookstown to its western and southern boundaries which act as the principal service, retail and education centres for the wider Sperrins area. The nearest towns to the Project Area are Omagh (c. 18.8 km to the southwest), Strabane (c. 25.5 km to the northwest) and Cookstown (c. 25.5 km to the southeast). The nearest settlements are (in order of proximity to the Project Area):
- Greencastle
 - Rouskey
 - Gortin
 - Mountfield
 - Plumbridge
 - Loughmacrory

- Newtonstewart.

2.4 The closest settlements are marked on Figure 2.2.

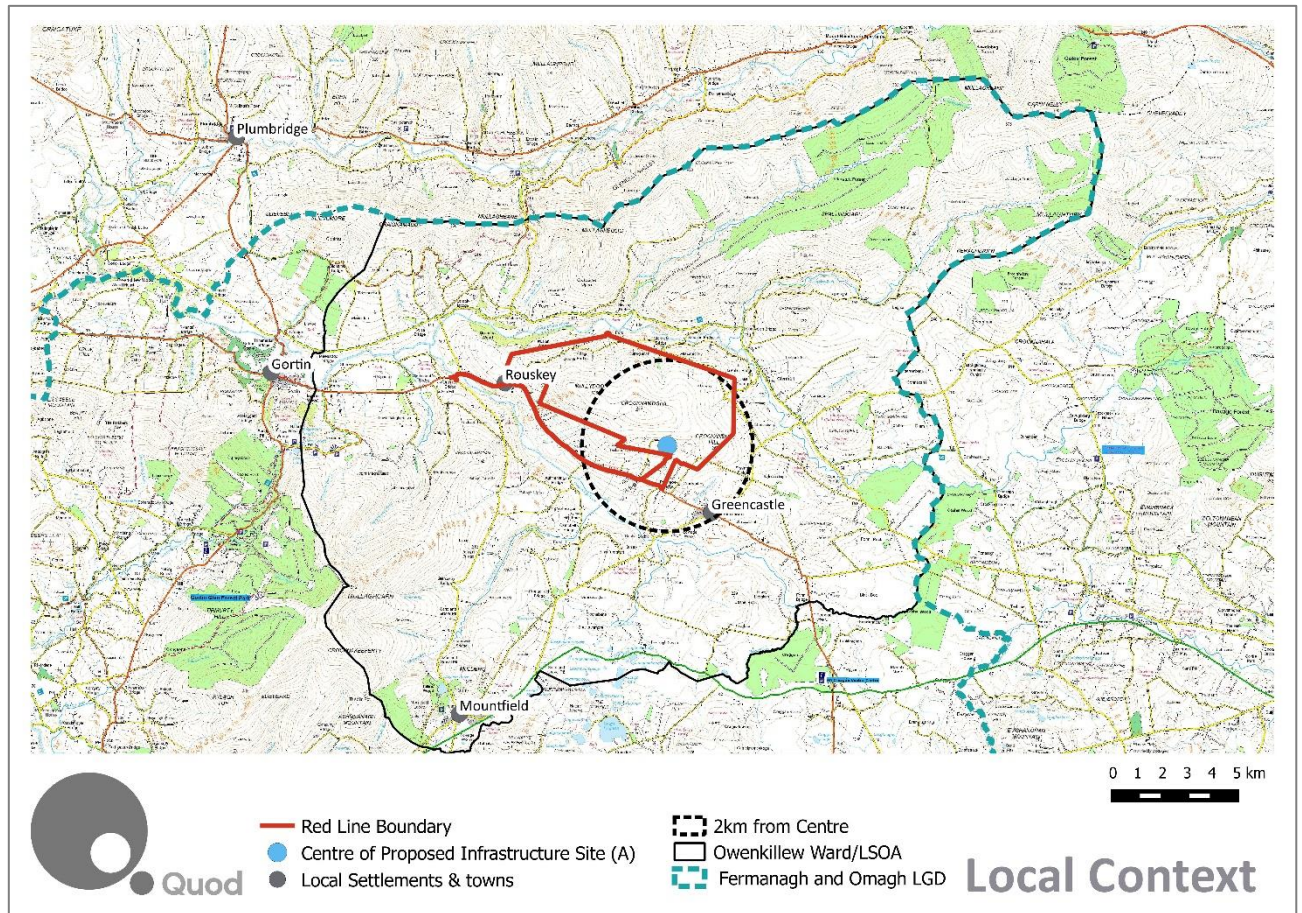
2.5 Figure 2.3 shows the statistical geography of the local area – the Project Area is located within Owenkillew Super Output Area (SOA) (which has the same boundary as Owenkillew Ward). SOAs represent neighbourhoods or local areas for the purposes of small area statistics¹.

Figure 2.1: Curraghinalt Project Area in Context – National



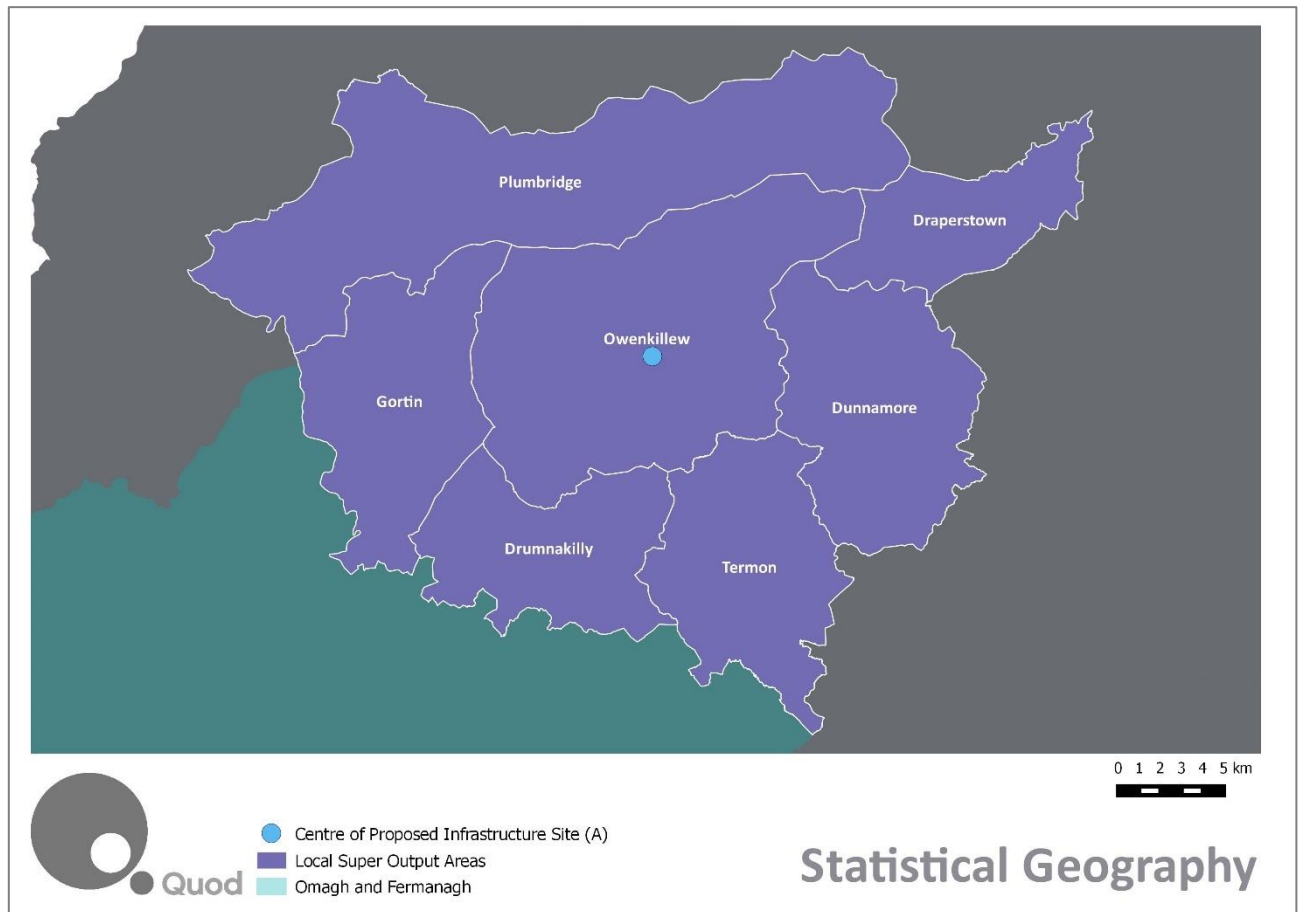
¹ Super Output Areas range in size (both area and population) and have between 225 and 1,350 households within them. There are 890 such areas in Northern Ireland. SOAs are also known as Lower Super Output Areas (LSOAs) in the context of the UK-wide Census

Figure 2.2: Curraghinalt Project Area in Context – Local



2.6 There are six SOAs surrounding Owenkillew SOA/Ward. Including Owenkillew SOA, these seven SOAs are considered in this baseline study as the “surrounding SOAs”. A map showing the seven SOAs surrounding the Project Area is showing in Figure 2.3.

Figure 2.3: Curraghinalt Project Area in Context – Statistical Geography



b) Methodology

- 2.7 Population and socio-economic data provided by various government bodies including the Northern Ireland Statistics and Research Agency (NISRA), Northern Ireland Tourism Board, and the Department of Agriculture and Rural Development were the principal sources of information that informed the baseline study.
- 2.8 Detailed information on the location of residential properties, commercial businesses and community facilities was sourced from the Ordnance Survey of Northern Ireland Code Point data set. At a local level (within 2km radius from the centre of the Proposed Infrastructure Site (Area A)), these Code Point locations were cross referenced against satellite images and manually checked where possible by the DGL field team.

2.9 2011 Census data for the Owenkillew SOA has been compared to Northern Ireland, FODC and the SOAs directly adjoining the Owenkillew SOA (“the surrounding SOAs”). Where change over this period is relevant in order to establish the socio-economic baseline and context, a comparison between 2011 and the 2001 Census data has been presented.

2.10 The baseline study considers the following topics and social and economic indicators:

- **Demographic and Community Profile:**
 - Population and demographics;
 - Nationality, ethnicity and religion;
 - Households and accommodation; and
 - Community Facilities.
- **Economic Profile**
 - Education and skills;
 - Economic activity;
 - Socio-economic classification and indices of deprivation; and
 - Other socio-economic indicators.
- **Tourism and Leisure**

2.11 The report concludes with a short summary of the information presented under each of the headings listed above including data tables and figures of relevance. Complete raw data tables are set out in Appendix 2.

3 DEMOGRAPHIC AND COMMUNITY PROFILE

a) Population and Demographics

3.1 The following sections present 2001 and 2011 Census data focusing on population and population density, population change and age structure.

i) Population and Density

3.2 According to the 2011 Census there were 2,350 people living within the Owenkillew SOA, with a population density of 0.13 persons per ha. This population density is well below the average for Northern Ireland (1.28) and below the average for the Fermanagh and Omagh LGD (0.45) and the surrounding SOAs (0.28).

3.3 The low population density for the Owenkillew SOA is indicative of the rural, sparsely populated nature of the area.

Table 3-1: Population, Density and Growth

Area	Land Area (Hectares) (Administrative Area 2011)	Total Population 2001	Population Density 2001 per ha	Total Population 2011	Population Density 2011 per ha	Population Growth 2001 - 2011
Owenkillew SOA	17,490	2,190	0.13	2,350	0.13	8%
Surrounding SOAs	60,730	14,820	0.24	17,080	0.28	15%
Fermanagh and Omagh LGD	284,670	105,480	0.35	113,160	0.40	7%
Northern Ireland	1,356,230	1,685,270	1.19	1,810,860	1.34	8%

Source: Northern Ireland Statistics and Research Agency – 2001 & 2011 Census

ii) Population Growth

3.4 The population of the Owenkillew SOA grew by 8% from 2,190 in 2001 to 2,350 in 2011. This is in line with the overall level of population growth in Northern Ireland (8%) and in the Fermanagh and Omagh LGD (7%).

3.5 The total population in the surrounding SOAs increased at more than twice the Northern Ireland level, growing 15% between 2001 and 2011. This is due to high growth in the population in Gortin to the west and Draperstown to the east of the Project Area.

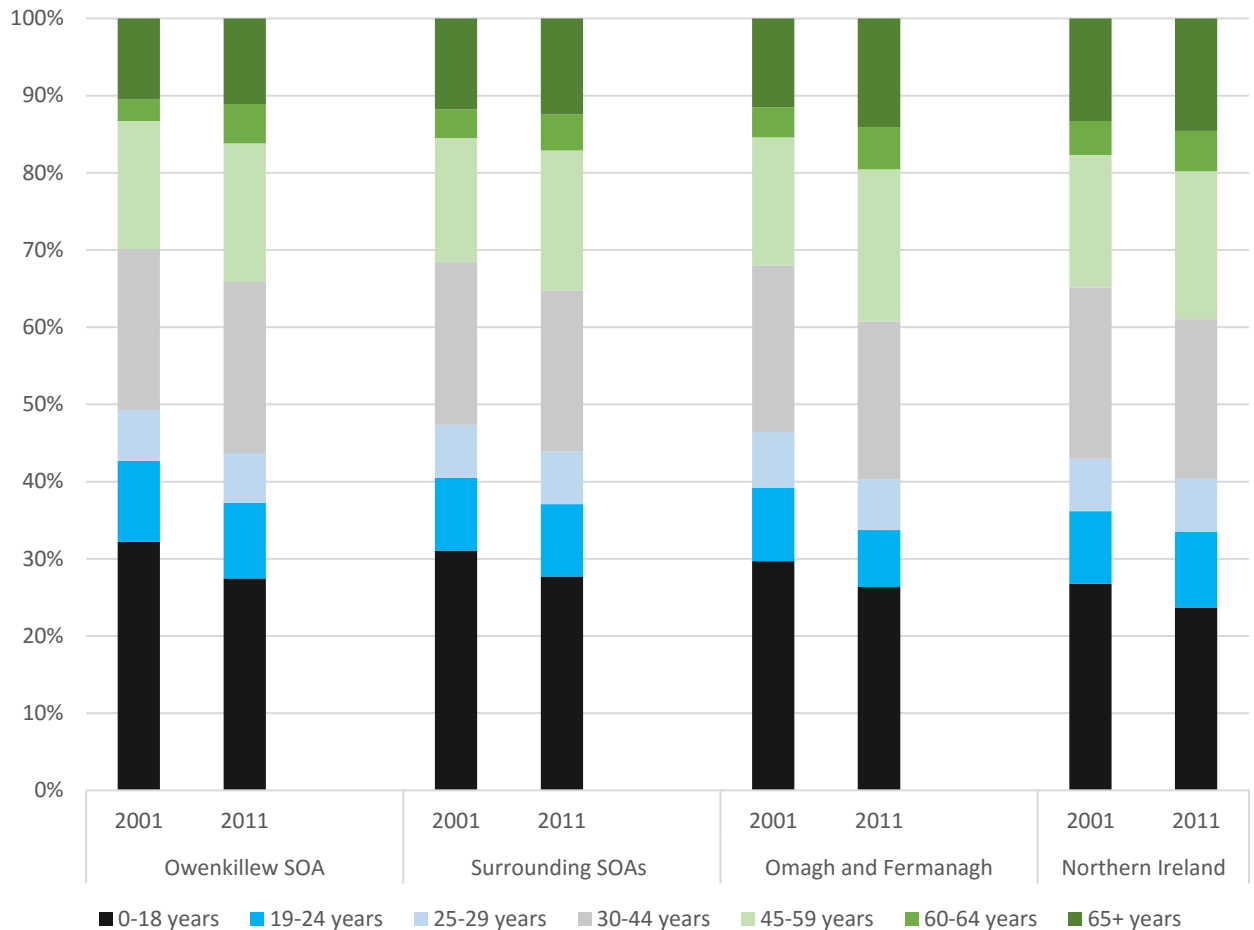
iii) Population by Age

3.6 The age profile of the population is significant in terms of the potential labour force, the demand for schools, amenities and other facilities and future housing demand. Figure 3.1 shows the age profiles for Northern Ireland, Fermanagh and Omagh, the surrounding SOAs and for the Owenkillew SOA in both 2001 and 2011.

3.7 This indicates that at all levels the percentage of the population under 18 years of age generally decreased between 2001 and 2011 while the percentage of the population aged 45 and over increased over the same period.

3.8 However, residents in the Owenkillew SOA and surrounding SOAs have a lower mean age (35.6 and 35 years of age respectively) and median age levels (33 and 34) than across Northern Ireland (mean age of 37.6 and median of 36) or the Fermanagh and Omagh LGD (37.5 and 37). While the mean and median ages for Northern Ireland and Fermanagh and Omagh rose in the period 2001 to 2011, these age levels have remained static in the Owenkillew SOA and have decreased in the surrounding SOAs.

Figure 3.1: Age Profile (2001 - 2011 Comparison)

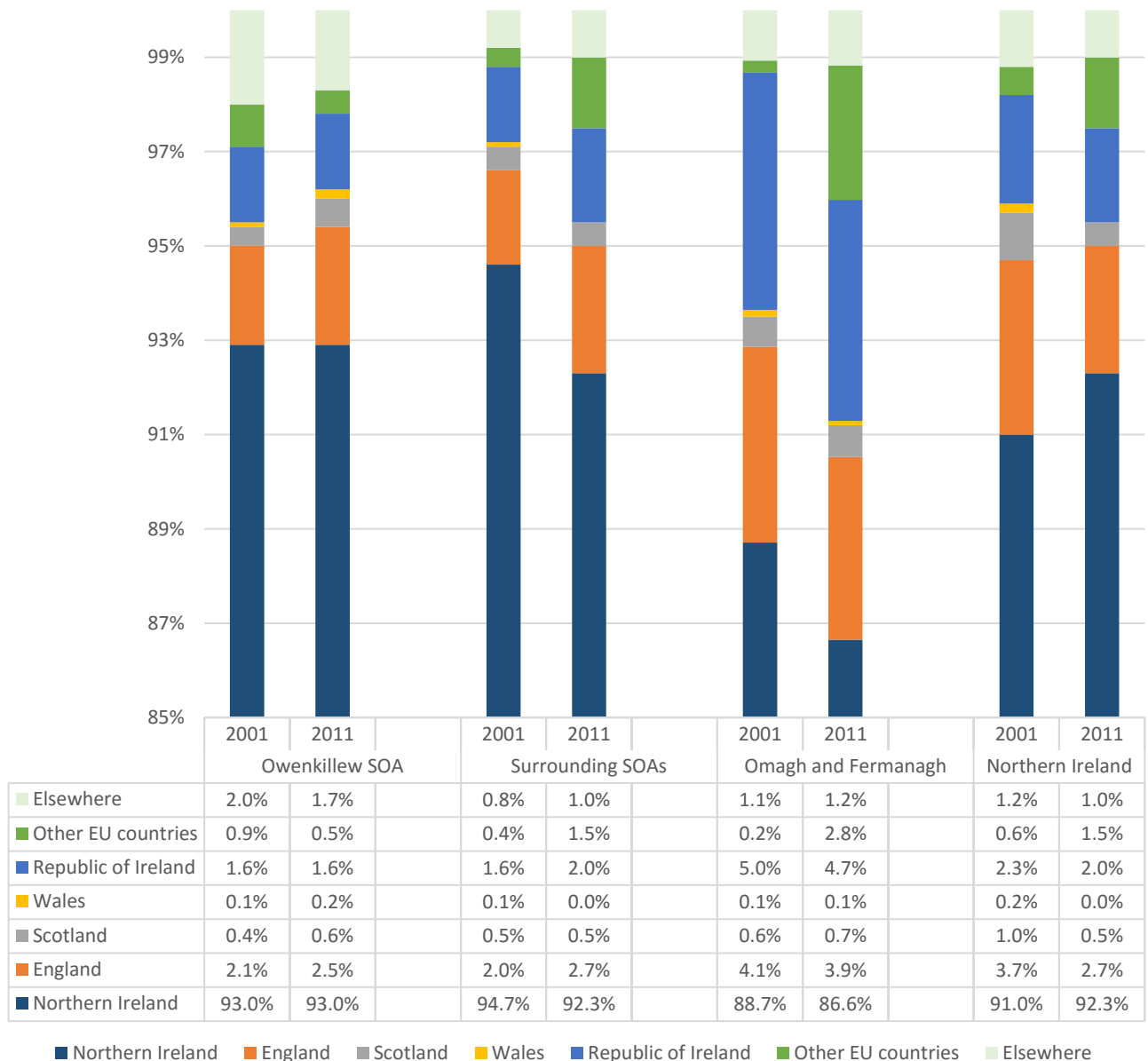


Source: Northern Ireland Statistics and Research Agency – 2001 & 2011 Census

iv) Nationality

- 3.9 Census data indicates a relatively homogenous population in terms of country of birth at each geographical level, with a large majority of people having been born in Northern Ireland.
- 3.10 The data also indicates that despite a growth in the number of people from other EU countries and elsewhere since 2001, the overall percentage of people born in Northern Ireland was higher in 2011 at all geographical study levels except for Fermanagh and Omagh LGD.
- 3.11 This data suggests that at both the Owenkillew SOA level and the District level the majority of the population was born in Northern Ireland with low levels of immigration.

Figure 3.2: Country of Birth (2001 - 2011 Comparison)



Source: Northern Ireland Statistics and Research Agency - 2011 Census

3.12 In 2014/15 Fermanagh and Omagh had net in-migration of approximately 50 people from international (non-UK) origins. The LGD had net out-migration of approximately 75 people to elsewhere in the UK and a net out-migration of 200 people to elsewhere within Northern Ireland. Overall, the migration resulted in net loss of around 220 people from the LGD over 2014/15. Natural change in population made up for this loss, however, and the overall population of the LGD grew by 0.3%.

3.13 At a national level, international (non-UK) in-migration substantially outweighs the out-migration of Northern Irish residents to the UK or elsewhere.

Table 3-2: Components of population change 2014-15

Area	2014 Resident Population	Natural Change ¹	Net International Migration	Net Within UK Migration	Net Internal Migration	Other Changes	2015 Resident Population	Population Change	% change
Fermanagh & Omagh	114,990	550	50	-75	-194	30	115,310	320	0.3%
Northern Ireland	1,840,500	8,790	2,800	-760	0	310	1,851,620	11,120	0.6%

Source: NISRA (August 2016). Numbers may not sum due to rounding

v) Ethnicity

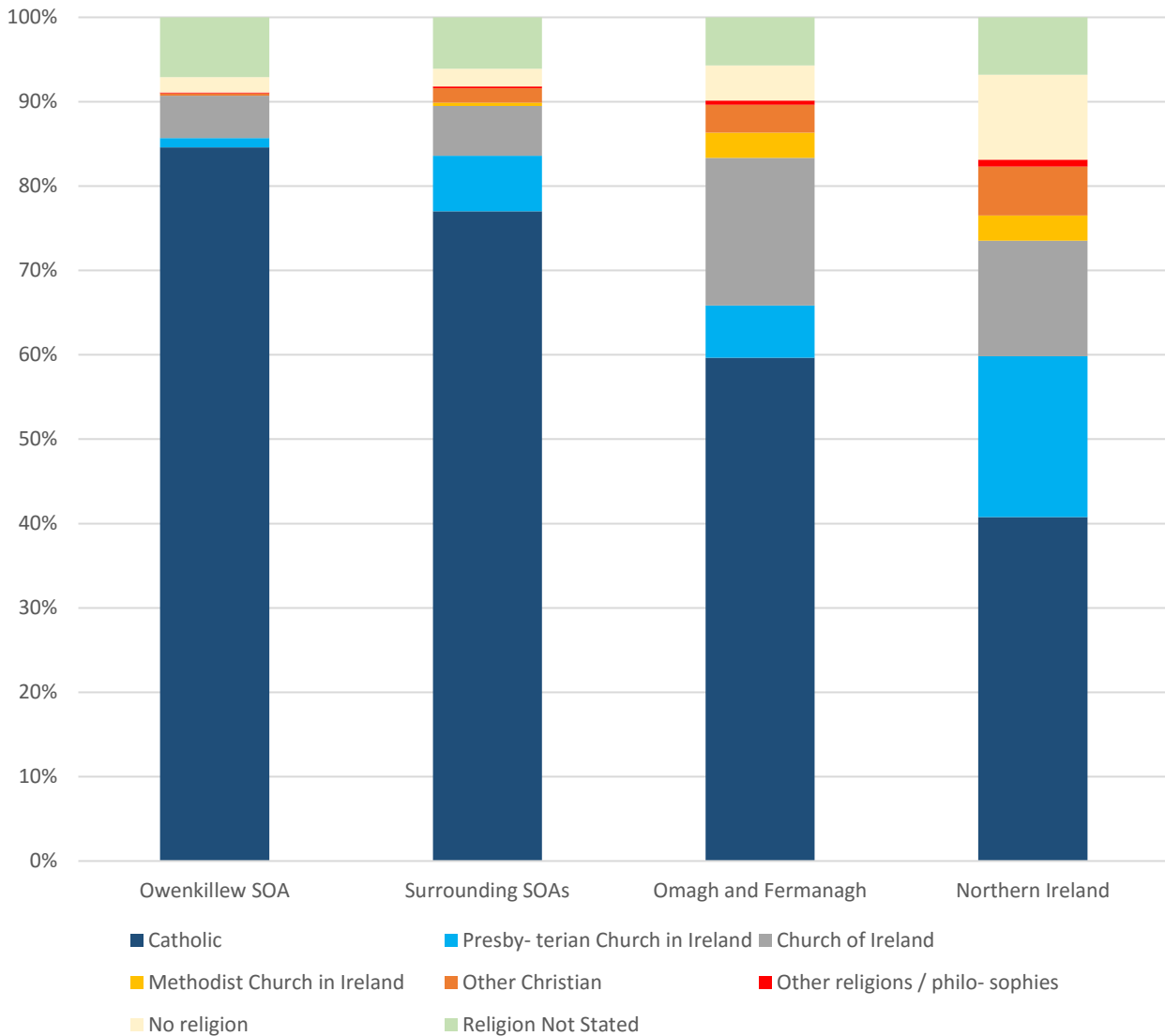
3.14 There is not a high level of ethnic diversity at all spatial scales considered here. Census data on population by ethnic group indicates a high level of homogeneity of the population at all geographical levels. The ethnic classification of the population of the Owenkillew SOA is overwhelmingly 'White' at all spatial scales ranging from 99.7% in the Owenkillew SOA to 98.2% across Northern Ireland as a whole.

vi) Religion

3.15 Census data (2011) on population by religious group indicates a relatively high proportion of people of Catholic faith living in the Owenkillew SOA (85%), compared with lower figures for the surrounding SOAs (77%), for the Fermanagh and Omagh LGD (60%) and in Northern Ireland as a whole (41%).

3.16 This suggests that while the Owenkillew SOA is predominantly Catholic, the surrounding SOAs have a higher percentage of Church of Ireland and other religious groups.

Figure 3.3: Religion



Source: Northern Ireland Statistics and Research Agency – 2011 Census

b) Housing Profile

3.17 As a particularly sensitive receptor, the specific location of residential dwellings within the Owenkillew SOA has been surveyed and mapped.

3.18 There are no inhabited dwellings on the Project Area. A study of postcode data, supplemented by site visits and aerial photography shows that there are 168 residential buildings within 2km of the centre of the proposed infrastructure layout. Within Owenkillew SOA, there are approximately 1,150

residential buildings. These homes are mapped in Figure 3.4 and Figure 3.5. A full list addresses within 2km of the centre of the proposed infrastructure layout is set out in Appendix A.

Figure 3.4: Residential buildings within 2km

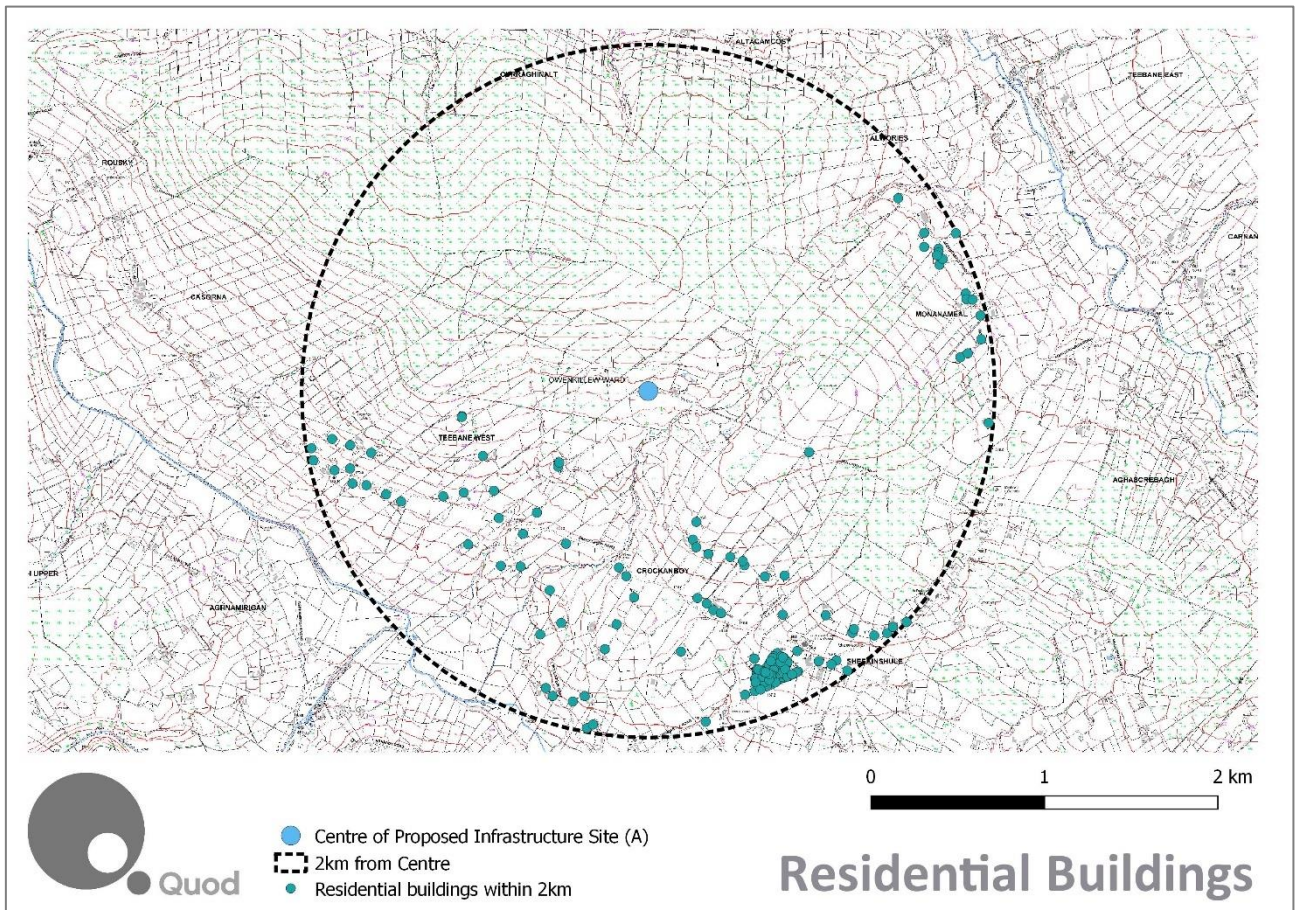
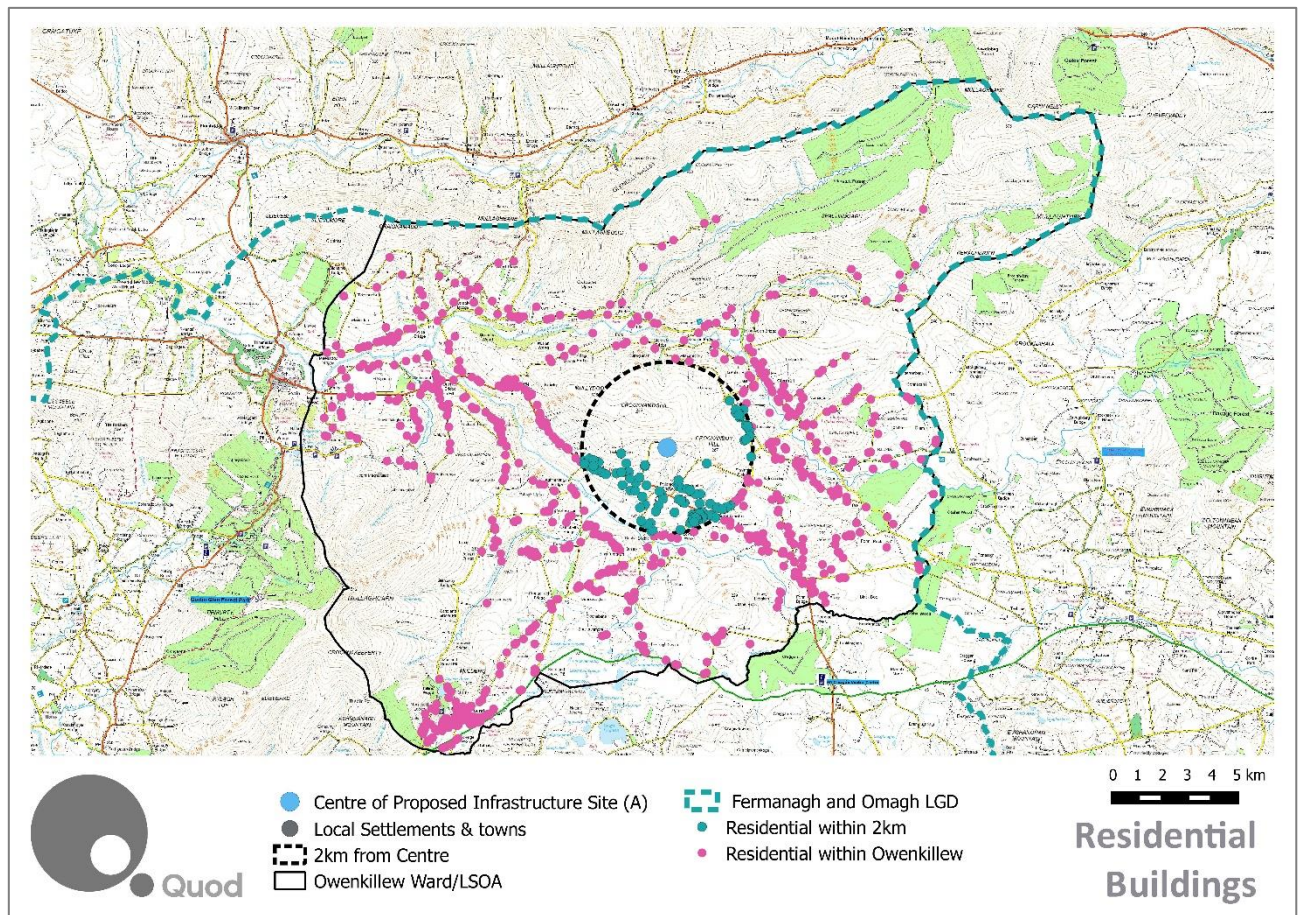


Figure 3.5: Residential Buildings within Owenkillev



i) Average Household Size

- 3.19 There was significant growth in the number of households at all spatial levels between 2001 and 2011. This trend was particularly pronounced in the Owenkillev SOA and surrounding SOAs with increases of 17% and 22% respectively.
- 3.20 During the same period, there was a corresponding decrease in average household sizes with the average household size in the Owenkillev SOA shrinking. Nonetheless, at an average of 3.15 persons per household in 2011, the average household size was considerably larger in the Owenkillev SOA than that in the Fermanagh and Omagh LGD and Northern Ireland levels at 2.70 and 2.54 respectively.

Table 3-3: Households, Growth & Average Size (2001 - 2011 Comparison)

Area	2001	2011	Change 2001 - 2011	% Growth	Average Household Size 2001	Average Household Size 2011
Owenkillew SOA	4,500	5,470	970	17%	3.44	3.15
Surrounding SOAs	36,580	41,510	4,940	22%	3.46	3.12
Fermanagh and Omagh	626,720	703,280	76,560	14%	2.84	2.70
Northern Ireland	4,500	5,470	970	12%	2.65	2.54

Source: Northern Ireland Statistics and Research Agency – 2001 & 2011 Census

ii) Household Composition

- 3.21 Owenkillew SOA is predominantly family housing. Households with married couples with dependent children represent the largest household type group – 30% of households in the Owenkillew SOA – which is significantly higher than the Northern Ireland average of 20%. The proportion of households with cohabiting couples or lone parents in the Owenkillew SOA is lower than Northern Ireland or Fermanagh and Omagh LGD levels.
- 3.22 Owenkillew SOA has relatively low levels of one-person households (19% compared to 27% in Northern Ireland), all pensioner households (13% compared to 18% in Northern Ireland) and cohabiting households (1% compared to 4% in Northern Ireland).
- 3.23 A comparison of 2001 and 2011 Census data indicates a local increase in the proportion smaller households (one person and all pensioner households) in the Owenkillew SOA which is similar to other spatial levels. There has also been an increase in households with no children.

Table 3-4: Household Composition

		Owenkillew SOA	Surrounding SOA	Fermanagh and Omagh	NI
All Households		750	5,780	41,510	703,280
One person household	Aged 65+	8%	10%	11%	11%
	Other	11%	12%	16%	17%
Married couple	No children	8%	9%	10%	10%
	With dependent children	30%	32%	24%	20%
	All children non-dependent	13%	12%	10%	8%
Same sex civil partnership (all households)		0.0%	0.0%	0.0%	0.1%
Cohabiting couple	No children	1%	2%	2%	3%
	With dependent children	2%	2%	2%	2%
	All children non-dependent	0%	0%	0%	0%
Lone parent	With dependent children	6%	4%	7%	9%
	All children non-dependent	8%	6%	5%	5%
Other - All residents 65+		4.8%	5%	6%	6%
Other		7.1%	7%	6%	6%

Source: Northern Ireland Statistics and Research Agency – 2011 Census; numbers have been rounded.

iii) House Type

3.24 Most houses here are detached houses or bungalows (79.3%). This reflects the rural nature of the area and the high levels of family housing. This compares to 74% in the surrounding SOAs and 60% in Fermanagh and Omagh LGD. Northern Ireland as a whole has a more mixed house type profile with 37% of households living within detached houses or bungalows.

Table 3-5: House Type

House Type	Owenkillew SOA	Surrounding SOAs	Fermanagh and Omagh LGD	Northern Ireland
Household Spaces (Base)	800	5,840	44,890	748,240
Household Spaces with Residents	93%	94%	93%	94%
Household Spaces without Usual Residents	7%	6%	8%	6%
Detached House or Bungalow	79%	74%	60%	37%
Semi-detached House or Bungalow	16%	14%	21%	28%
Terraced House or Bungalow	4%	8%	14%	25%
Purpose Built Block of Flats or Tenement	1%	2%	4%	9%
Part of a Converted or Shared house (incl Bed- sits)	0%	0%	1%	1%
In Commercial Building	0%	0%	1%	0%
Caravan or other Mobile or Temporary Structure	0%	0%	0%	0%

Source: Northern Ireland Statistics and Research Agency – 2011 Census

iv) Household Tenure

3.25 Owenkillew SOA is predominately made up of owner occupied homes (82%) - either owned outright (48%) or through a mortgage or loan (33%). This is higher than all comparator areas. At the district and Northern Ireland level the proportion of houses that are rented is significantly higher than Owenkillew SOA and the surrounding SOAs. This is particularly significant within the category of 'rented from: Northern Ireland Housing Executive' where the proportions are double and almost triple at the district and Northern Ireland level respectively when compared to the SOA levels.

Table 3-6: House Tenure

House Tenure	Owenkillew SOA	Surrounding SOAs	Fermanagh and Omagh LGD	Northern Ireland
Owner Occupied: Owns outright	48%	46%	41%	32%
Owner Occupied: Owns with a mortgage or loan	33%	34%	30%	35%
Shared ownership	0%	0%	0%	1%
Rented from: N. Ireland Housing Executive	4%	4%	8%	12%
Rented from: Housing association or charitable trust	1%	1%	2%	3%
Rented from: Private landlord or letting agency	8%	10%	14%	14%
Rented from: Other	2%	2%	2%	2%

House Tenure	Owenkillew SOA	Surrounding SOAs	Fermanagh and Omagh LGD	Northern Ireland
Lives rent free	3%	3%	3%	3%

Source: Northern Ireland Statistics and Research Agency – 2011 Census

c) Socio-economic Classification and Deprivation

3.26 The largest socio-economic category in the Owenkillew SOA is NS-SeC 4 which refers to small employers and own account workers – many of whom will be working in agriculture, construction and related trades. At 20% the percentage of people in this group in the Owenkillew SOA is more than double than that for Northern Ireland (9%). This level is also considerably higher than the rate for the Fermanagh and Omagh LGD (14%) and even for the surrounding SOAs (16.7%).

3.27 Table 3.7 categorises people aged 16-74 in each of the relevant geographical areas according to the National Statistics Socio-Economic Classification (NSSeC) as used by NISRA to compile the 2011 Census results.

Table 3-7: Socioeconomic Classification

Category	Owenkillew SOA	Surrounding SOAs	Fermanagh & Omagh LGD	Northern Ireland
All usual residents: Aged 16- 74 years	1,650	11,970	81,190	1,313,420
1.1. Large employers and higher managerial and administrative occupations	1%	1%	1%	1%
1.2. Higher professional occupations	4%	5%	5%	6%
2. Lower managerial, administrative and professional occupations	15%	18%	17%	19%
3. Intermediate occupations	9%	9%	11%	13%
4. Small employers and own account workers	20%	17%	14%	9%
5. Lower supervisory and technical occupations	6%	6%	7%	7%
6. Semi-routine occupations	12%	12%	16%	15%
7. Routine occupations	14%	14%	14%	13%

Category	Owenkillew SOA	Surrounding SOAs	Fermanagh & Omagh LGD	Northern Ireland
L14.1 Never worked	8%	6%	6%	5%
L14.2 Long-term unemployed	3%	2%	2%	2%
Not classified: L15 Full-time students	9%	10%	9%	10%

Source: Northern Ireland Statistics and Research Agency – 2011 Census

- 3.28 The latest available data on deprivation is the Northern Ireland Multiple Deprivation Measure 2010 (NIMDM 2010). The next release of this data is not expected to be available until 2017.
- 3.29 NIMDM 2010 identifies small area concentrations of multiple deprivation across Northern Ireland. All SOAs in Northern Ireland are ranked, with a rank of 1 denoting the most deprived SOA (Whiterock 2 in Belfast) and 890 denoting the least deprived SOA (Wallace Park 1 in Lisburn). SOAs with ranks of 89 or lower are in the top 10% most deprived SOAs in Northern Ireland.
- 3.30 Fermanagh and Omagh LGD has 49 SOAs ranking from 80 (Lisanelly 2) to 713 (Castlecoole 2). With an overall ranking of 313, Owenkillew SOA is outside the top 10% most deprived SOAs in Northern Ireland. However, its rank does put it in a band of the top 30% to 40% most deprived SOAs.
- 3.31 Owenkillew SOA is ranked 436 on the Income Domain and 419 on the Employment Domain. Owenkillew SOA is ranked 1 on the Proximity to Services Domain and is therefore is the least well situated area with regard to services such as hospitals, post offices or supermarkets in Northern Ireland.
- 3.32 This information is consistent with the largely rural character of the Owenkillew SOA and the isolated nature of the area in terms of access to public services which tend to be clustered in larger urban centres. The employment and income indicator results are also consistent with an economy focused agricultural land uses.

Table 3-8: Indices of Multiple Deprivation 2011

Measures of Deprivation	Owenkillew SOA Rank (Total Scale 1 – 890)
Multiple Deprivation Measure	313
Income Domain	436

Measures of Deprivation	Owenkillew SOA Rank (Total Scale 1 – 890)
Employment Domain	419
Health Deprivation and Disability Domain	367
Education, Skills and Training Domain	461
Proximity to Services Domain	1
Living Environment Domain	708
Crime and Disorder Domain	851
Income Deprivation Affecting Children Measure	451
Income Deprivation Affecting Older People Measure	373

Source: Northern Ireland Multiple Deprivation Measure 2010

d) Incomes

- 3.33 Annual Survey of Hours and Earnings data (2015) recording median and mean income data is available for Fermanagh and Omagh LGD and for Northern Ireland as a whole. Data is not available for smaller geographies.
- 3.34 Median weekly earnings in Fermanagh and Omagh LGD were £342.00 in 2015 (£17,780 pa), lower than the median across Northern Ireland of £382.50 (£19,890 p.a.).

e) Community Uses

- 3.35 Within Owenkillew SOA, 11 community buildings have been identified. These are mapped on Figure 3.6 and listed in Table 3.9. The buildings include two primary schools and one nursery school.

Table 3-9: Community Uses within 2km of the Centre of Proposed Infrastructure

Map	Community use	Address
1	St Patrick's GFC	47 Mullydoo Road, Sheskinshule, Greencastle
2	Greencastle Amateur Boxing Club	47 Mullydoo Road, Sheskinshule, Greencastle
3	Greencastle Community Association	47 Mullydoo road, Sheskinshule, Greencastle
7	St Patrick's Roman Catholic Church	166a Greencastle Road, Sheskinshule, Mountfield
5	Greenan Church	139, Gorticashel Road, Greenan
6	Green Elves Nursery School	277 Crockanboy Road, Sheskinshule, Omagh
7	St Mary's Roman Catholic Church House	104 Crockanboy Road, Rouskey
8	Main Street Community Centre	2 Main Street, Mountfield

Map	Community use	Address
9	Corpus Christi Church	7 Barony Road, Mountfield
10	Our Lady of Lourdes Primary School	279 Crockanboy Road, Tyrone, Greencastle
11	St Brigids Primary School	4 Lenagh Road, Omagh

Source: Ordnance Survey of Northern Ireland – Code Point (January 2016)

3.36 As there is a relatively limited provision of community uses within Owenkillew SOA, consideration of key community facilities including health and education within the wider area is set out below.

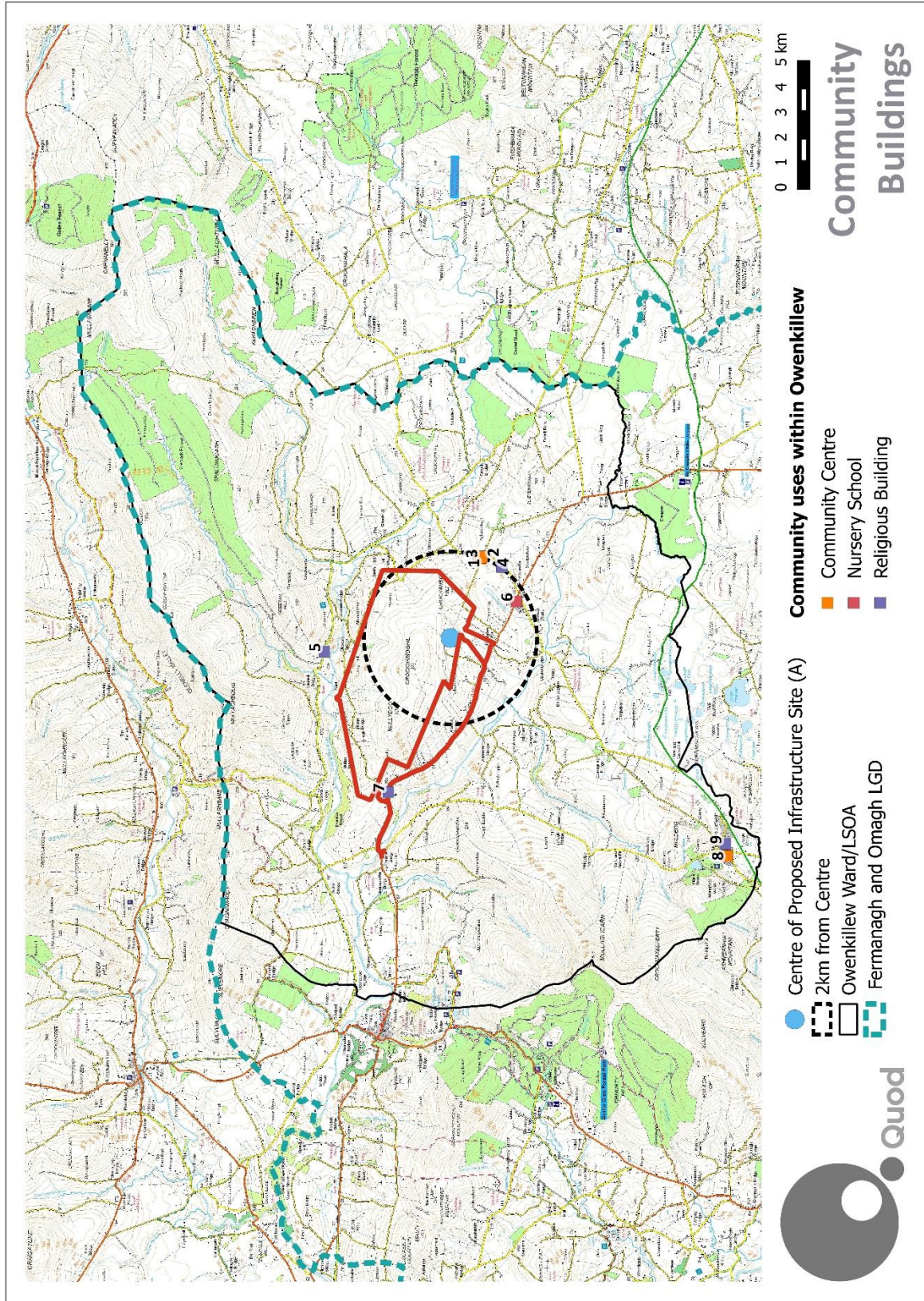
i) Healthcare

3.37 There are some acute services are provided in Tyrone County Hospital in Omagh (approx. 17.5 km to the southwest of the Project Area). These services include: a 24 hour Urgent Care and Treatment Centre; cardiac assessment unit; renal unit; inpatient rehabilitation and palliative care services; day case theatres; X-Ray; laboratory and a comprehensive range of outpatient services. The hospital has 30 inpatient beds and 17 day case beds.

3.38 Tyrone and Fermanagh Hospital located just outside Omagh provides acute mental health inpatient services for adults and older people. The hospital has 26 inpatient beds.

3.39 There is a medical centre with a General Medical Practitioner in the village of Gortin (approx. 7.8 km) to the west of the Project Area as well as in the village of Plumbridge (approx. 5.7 km to the northwest). Additional health services are located in larger settlements in the wider area including Newtown Stewart and Omagh.

Figure 3.6: Community Uses within Owenkillew



ii) Education

- 3.40 There are 21 post-primary schools (4 controlled, 5 voluntary, 10 Catholic maintained and 2 integrated² schools) and 83 primary schools (including 27 controlled, 52 Catholic maintained, 2 integrated and 2 other maintained schools) within the Fermanagh and Omagh district. There are approximately 10,830 primary school and 10,020 secondary school children on roll across these schools.
- 3.41 The closest primary school to the Project Area is Our Lady of Lourdes Primary school located in Greencastle within 2km of the Project Area. The school currently has 122 pupils on roll (2015/16), and an approved admissions number of 19 pupils each year. The total number of pupils on roll has risen slightly since 2012/13 when 106 pupils were on roll. This school serves the parishes of Greencastle and the Rouskey; and Gortin Parish.
- 3.42 There are no secondary schools within Owenkillew SOA. However, there are schools located to the southwest in Omagh as well as Dean Maguiric College in Carrickmore and St Colm's High School, to the northeast, in Draperstown.
- 3.43 Within the wider region, the largest concentration of schools is in the town of Omagh which has schools at all levels of education. Cookstown and Strabane are also important centres for primary and secondary education in for the wider Sperrins area.
- 3.44 South West College is a further and higher education college that serves the wider South West of Northern Ireland. The college has campuses in Cookstown, Dungannon, Enniskillen and Omagh. DGL is already working in partnership with the college to deliver bursaries and internships for students in fields related to the mining activities including subjects such as Geology, Civil Engineering, Environmental Sciences, Communications, Stakeholder Engagement, Administration, IT and Health and Safety.

² Integrated schools (or Grant Maintained Integrated schools “seek to add value to the education process by inviting Protestants and Catholics to come together with other traditions in order to improve their understanding of one another, their own cultures, religions and values.”

f) Emergency Services

- 3.45 DGL has a mine rescue team in place to deal with a wide range of emergency situations underground. The Dalradian Mine Rescue Team is also supported in an emergency with mutual assistance from other mine rescue teams in Ireland.
- 3.46 Mutual training is co-ordinated by the Irish Mine Rescue Committee which was formed in 2003 and co-ordinates all activities on the island of Ireland.
- 3.47 Mutual training exercises are carried out three times a year at different host mines. The objective of the training is to test rescue systems and further strengthen overall mine rescue capability on the island.
- 3.48 Part of the mutual training also includes support from multi-agency partners including the Police Service of Northern Ireland (PSNI), Northern Ireland Fire and Rescue Services, Northern Ireland Ambulance Service and the Irish Coast Guard. The mutual training assists blue light services in responding to emergencies under the Joint Emergency Services Interoperability Principles (JESIP) between police, fire service, ambulance and other responding services.
- 3.49 The main stakeholder involved with Mutual Training at DGL are:
- MRS Training and Rescue
 - Boliden Tara Mines
 - Irish Salt Mining and Exploration Co. Ltd.
 - Gyproc Ireland
 - Police Service of Northern Ireland
 - Irish Coast Guard
 - Maritime and Coast Guard Agency
 - Northern Ireland Fire and Rescue Service

- Northern Ireland Ambulance Service.

g) Turbary Rights

3.50 Turbary Rights refer to the common law right to cut turf or peat. That is to say that, in Northern Ireland, residents other than the land owner may have a right to access a parcel land to obtain peat or turf for personal use.

3.51 DGL's land holdings cover land that has, in the past, been subject to Turbary Rights. However, DGL has investigated the current use of this land for such purposes and has confirmed that no one has exercised such rights in living memory and the rights have therefore fallen away. This has been confirmed in writing by previous owners.

4 ECONOMIC PROFILE

4.1 This section sets out the economic profile of Owenkillew SOA including levels of education and skills, economic activity and commercial activities; each has been compared to the averages across the district and in Northern Ireland.

a) **Education and Skills**

4.2 Census data provides information on qualifications attained and student numbers with reference to the following classification system used by the Northern Ireland Statistics and Research Agency (NISRA):

- Level 1: General Certificate of Secondary Education (GCSE) (grades D-G), Certificate of Secondary Education (CSE) (grades 2-5), 1-4 CSEs (grade 1), 1-4 GCSEs (grades A-C), 1-4 'O' level passes, National Vocational Qualification (NVQ) level 1, General National Vocational Qualification (GNVQ) Foundation or equivalents;
- Level 2: 5+ CSEs (grade 1), 5+ GCSEs (grades A-C), 5+ 'O' level passes, Senior Certificate, 1 'A' level, 1-3 AS levels, Advanced Senior Certificate, NVQ level 2, GNVQ Intermediate or equivalents;
- Level 3: 2+ 'A' levels, 4+ AS levels, NVQ level 3, GNVQ Advanced or equivalents;
- Level 4: First degree, NVQ level 4, HNC, HND or equivalents;
- Level 5: Higher degree, NVQ level 5 or equivalents.

4.3 According to the 2011 Census the Owenkillew SOA has a marginally less qualified local population compared to Fermanagh and Omagh LGD and Northern Ireland. 34% of people aged over 16 years old in the Owenkillew SOA have no formal qualifications, compared to the Fermanagh and Omagh LGD figure of 32% and the Northern Ireland figure of 29%.

4.4 There was a higher proportion of Apprentices within the Owenkillew SOA, 5%, compared to 4% in the surrounding SOAs, Fermanagh and Omagh LGD and across Northern Ireland as a whole.

Table 4-1: Education Attainment & Qualification

2011	Owenkillew SOA	Surrounding SOAs	Fermanagh & Omagh LGD	Northern Ireland
Persons (16+ years) (Base)	1,770	12,940	88,350	1,431,540
No qualifications	10%	11%	11%	12%
Level 1	15%	15%	15%	15%
Level 2	12%	12%	11%	12%
Level 3	21%	23%	22%	24%
Level 4 and above	5%	4%	4%	4%
Apprenticeship	4%	4%	5%	4%
Other qualifications	10%	11%	11%	12%

Source: Northern Ireland Statistics and Research Agency – 2011 Census

i) Economic Activity

- 4.5 There were approximately 1,650 working age (aged 16 – 74 years) residents within the Owenkillew SOA at the time of the 2011 Census.
- 4.6 Census data reports the proportion of residents aged over 16 who are economically active in an area. A person is considered economically active if, in the week before the Census, they were either: in employment; seeking work and ready to start work within 2 weeks; or, waiting to start a job already obtained. People are considered economically inactive if in the week before the Census they were not in employment and either not available to start work within 2 weeks, not looking for work, or unable to work.
- 4.7 Overall the Owenkillew SOA has a lower rate of economically active residents than other spatial scales. Within the Owenkillew SOA 63% of working age residents are economically active. This compares to 66% in the surrounding SOAs, 66% in Fermanagh and Omagh LGD and 66% across Northern Ireland as a whole.
- 4.8 The Owenkillew SOA had an unemployment rate of 5.2% in 2011 which is similar to the rate across Northern Ireland of 5.0%. The rate of full-time self-employment in the Owenkillew SOA (10.7%) and surrounding SOAs (12.1%) differed considerably from the average rate across Northern Ireland (6.8%). The Owenkillew SOA and surrounding SOAs also had a larger percentage of students in the economically inactive category (8.7% and 7.8% respectively) than the Northern Ireland average of

6.2%. Economically inactive student residents are students aged over 16 who were not in work and not seeking work in the week before the Census.

- 4.9 A significantly higher proportion of residents living within the Owenkillew SOA and the surrounding SOA's are employed within the construction sector compared to at the other study spatial scales. In 2011, 22.4% of employed residents within the Owenkillew SOA were employed in the construction sector compared to the Northern Ireland figure of 8.2% and the Fermanagh and Omagh LGD figure of 11.2%.
- 4.10 There is a significantly higher proportion of residents working within the agriculture, forestry and fishing sector within the Owenkillew SOA (8.1%) compared to in Northern Ireland level (2.2%). A smaller percentage of people are employed in the wholesale and retail trade (14.9%) and in the public sector (3.9%) in the Owenkillew SOA than in Northern Ireland as a whole (17.5% and 8% respectively).

Table 4-2: Economic Activity

2011	Owenkillew SOA	Surrounding SOAs	Fermanagh and Omagh LGD	Northern Ireland
All usual residents: Aged 16-74 years	2,050	11,970	81,190	1,313,420
Economically Active	63%	66%	66%	66%
Employee Part Time	11%	11%	12%	13%
Employee Full Time	31%	33%	34%	36%
Self-employed	13%	15%	12%	9%
Unemployed	5.2%	4.5%	4.8%	5.0%
Full Time Student	4%	3%	3%	4%
Economically Inactive	37%	34%	34%	34%
Retired	11%	10%	12%	13%
Student (including full-time students)	9%	8%	6%	6%

2011	Owenkillew SOA	Surrounding SOAs	Fermanagh and Omagh LGD	Northern Ireland
Looking after home / family	4%	5%	5%	4%
Long- term sick / disabled	9%	8%	7%	7%
Other: Aged 16-74 years	4%	4%	4%	3%

Source: Northern Ireland Statistics and Research Agency – 2011 Census

Table 4-3: Employment Sector Breakdown

2011	Owenkillew SOA	Surrounding SOAs	Fermanagh and Omagh LGD	Northern Ireland
Agriculture, forestry and fishing	8%	8%	6%	2%
Mining and quarrying	0%	1%	1%	0%
Manufacturing	8%	10%	10%	10%
Electricity, gas, steam and air conditioning supply	1%	1%	0%	0%
Water supply; sewerage, waste management , remediation activities	1%	1%	1%	1%
Construction	22%	18%	11%	8%
Wholesale and retail trade; repair of motor vehicles, motorcycles	15%	14%	17%	18%
Transport and storage	3%	3%	3%	4%
Accommodation and food service activities	3%	4%	5%	5%
Information and communication	1%	1%	2%	3%
Financial and insurance activities	1%	2%	3%	3%
Real estate activities	0%	1%	1%	1%

2011	Owenkillew SOA	Surrounding SOAs	Fermanagh and Omagh LGD	Northern Ireland
Professional, scientific and technical activities	4%	4%	4%	5%
Public administration and defence; compulsory social security	4%	5%	5%	8%
Education	8%	10%	10%	9%
Human health and social work activities	15%	13%	14%	14%
Other	4%	4%	4%	5%
Public administration and defence; compulsory social security	4%	5%	5%	8%

b) Travel to Work

- 4.11 Data on travel to work is available at the LGD level through the Office for National Statistics. This data indicates that the majority of the population working in Fermanagh and Omagh also live in Fermanagh and Omagh (84%).
- 4.12 A small proportion of workers across the LGD reside in the neighbouring districts of Dungannon and Strabane at 4% and 6% respectively. A further 2% of workers reside in Belfast.
- 4.13 Data from NISRA on average distance travelled to work shows that residents of Owenkillew and Fermanagh and Omagh district travel an average of 15km to work. This is higher than the average distance across Northern Ireland of 13km.
- 4.14 Specific data on workers within broad industries indicates that over half of construction workers in Fermanagh and Omagh fall within the 'Other' category when considering distance travelled to work. This category includes working on an offshore installation, no fixed place or work or working outside the UK. This reflects the nature of the construction industry which is relatively mobile.

c) **Agricultural Uses**

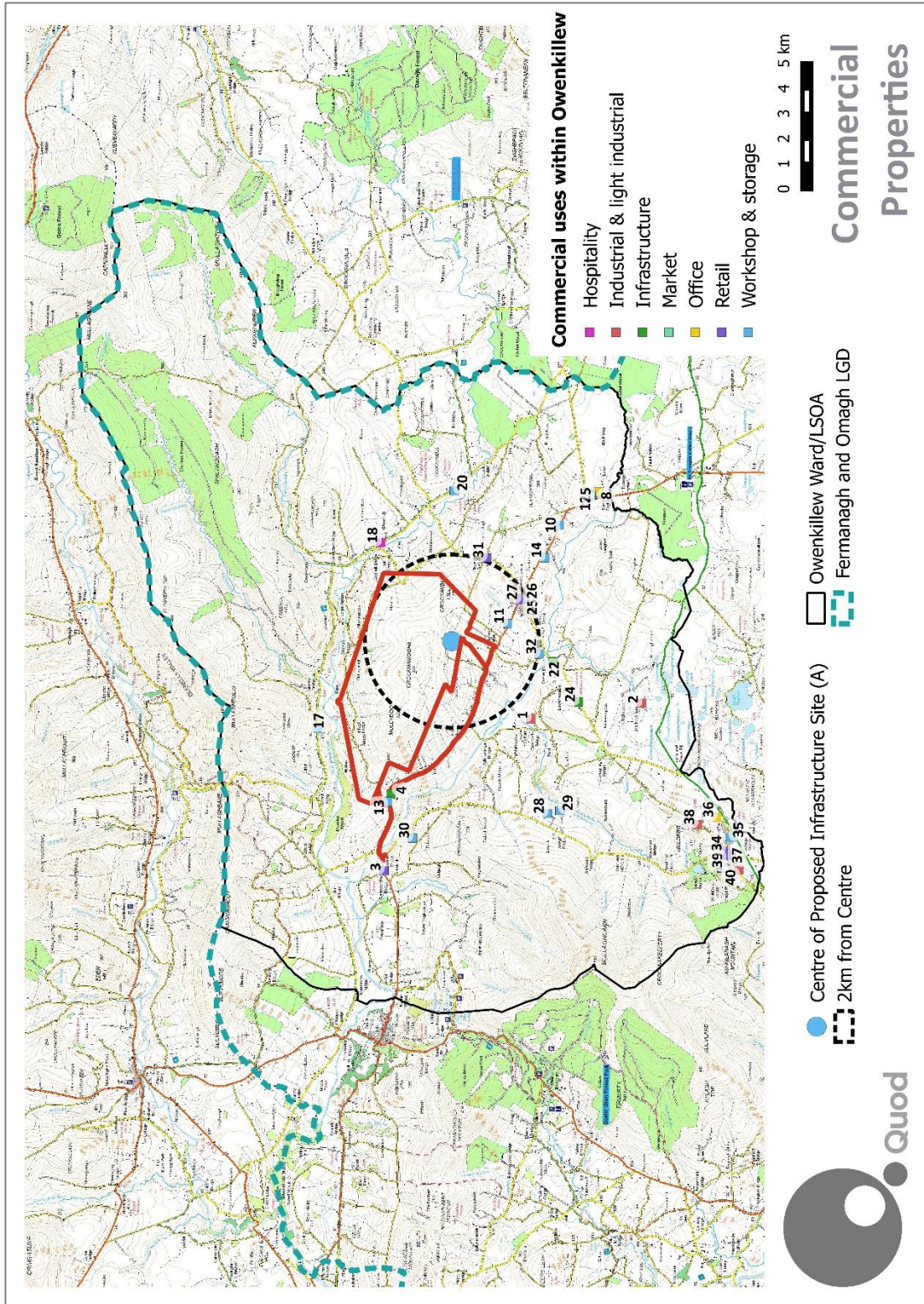
- 4.15 Farming comprises a key component of the local economy and the predominant land use in the area. The pattern of farm holdings in the local area is typically multiple small units for rough grazing, predominantly for poultry and sheep.
- 4.16 Data from the Agricultural Census 2015 indicates that there were some 5,133 farm holdings across Fermanagh and Omagh LGD in 2015, including 251 within Owenkillew SOA. These farm holdings had an estimated average size of 44 ha. Of the 10,920 ha of farm holdings within the Owenkillew SOA the vast majority (10,880 ha) was grassland rather than crop cultivation. Poultry comprised the predominant livestock (31,820 head) followed by sheep (30,142 head), and cattle (7,995 head).
- 4.17 In 2015 there were 933 residents registered as being involved in farm related economic activity in the Owenkillew SOA. The largest group was agricultural labourers (397), followed by farmers (285). The average Standard Output (SO) per farm in Owenkillew in 2015 was €26,780 (EUR) compared to the Northern Ireland average of €74,860 (EUR)³. A likely driver of this discrepancy is the proliferation of smaller landholdings in Owenkillew compared to fewer, larger farms in other parts of Northern Ireland which are more productive.

d) **Businesses and Commercial Properties**

- 4.18 There are 33 commercial properties within 5km of the Perimeter Fence of the Project Site. Commercial Properties in this case are defined as those who are liable to pay Business Rates. These

³ The **standard output** of an agricultural product (crop or livestock), abbreviated as **SO**, is the average monetary value of the agricultural output at farm-gate price, in euro per hectare or per head of livestock. Statistics from the Northern Ireland Agricultural Census 2015

properties are mapped on Figure 4.2 and listed in





4.19 Table 4-4. Figure 4.2 does include farms as commercial properties. Individual workplaces, including farms, have been presented in Figure 4.3 at a local scale.

Figure 4.1: Commercial Properties within Owenkillew (wide view)

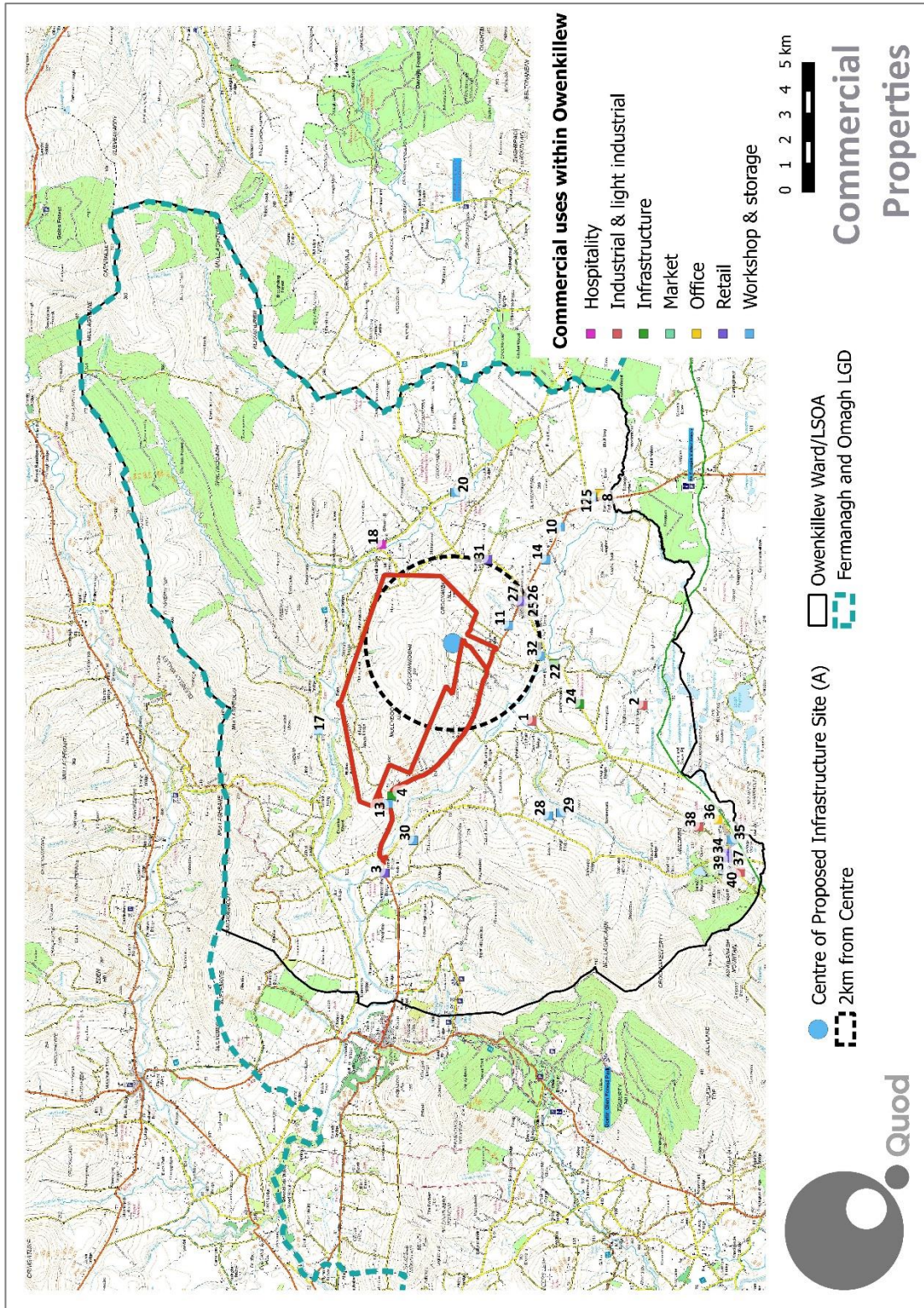


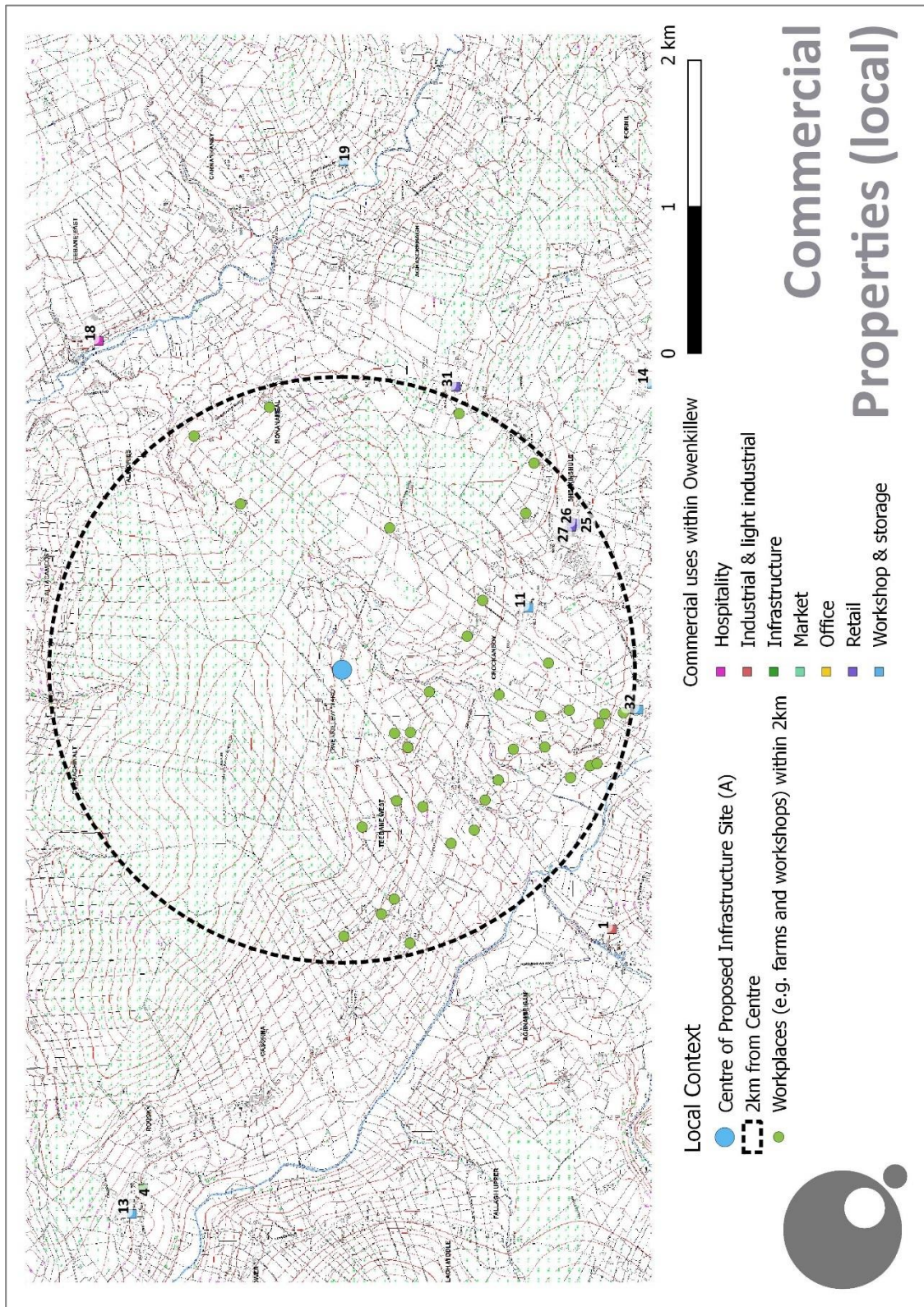
Table 4-4: Commercial Properties.

Map	Building Use	Address
1	Factory	48a Aghaboy Road, Binnafreaghan, Omagh
2	Quarry	Barony Road, Binnafreaghan, Mountfield
3	Post Office	67 Crockanboy Road, Glenmaccoffer, Gortin
4	Holiday Unit	105 Crockanboy Road, Rouskey, Rouskey
5	Light Industrial	Crockanboy Road, Formil, Greencastle
6	Light Industrial	Crockanboy Road, Formil, Greencastle
7	Light Industrial	Crockanboy Road, Formil, Greencastle
8	Office	280 Crockanboy Road, Formil, Greencastle
9	Sewage Disposal Works	117 Crockanboy Road, Greencastle
10	Stores	334 Crockanboy Road, Formil, Greencastle
11	W Offs Y Store	258a Crockanboy Road, Crockanboy, Omagh
12	Workshop	360, Crockanboy Road, Formil, Greencastle
13	Workshop	100a Crockanboy Road, Rouskey
14	Workshop Store	308a Crockanboy Road, Sheskinshule, Greencastle
15	Yard	333 Crockanboy Road, Greencastle
16	Shop Stores	2 Glencullin Road, Gorticashel Upper, Gortin
17	Stores	2 Glencullin Road, Gorticashel Upper, Gortin
18	Post Office, Pub & House	212 Gorticashel Road, Teebane East, Omagh
19	Stores	290 Gorticashel Road, Crouck, Mountfield
20	Workshop	157 Gorticashel Road, Crouck, Mountfield
21	Cashel Bridge Quarry	100 Greencastle Road, Cashel, Mountfield
22	Sewage Disposal Works	134 Greencastle Road, Cashel, Mountfield
23	Sewage Disposal Works	127 Greencastle Road, Cashel, Mountfield
24	Service Reservoir	Greencastle Road, Binnafreaghan, Mountfield
25	Livestock Market	141 Greencastle Road, Sheskinshule, Mountfield
26	Convenience Store	140 Greencastle Road, Sheskinshule, Mountfield
27	Pub & Filling Station	140 Greencastle Road, Sheskinshule, Mountfield
28	Workshop	67a Lenagh Road, Lenagh, Mountfield
29	House, Workshop, Office & Yard	53 Lenagh Road, Lenagh, Mountfield
30	House, Workshop	126b Lenagh Road, Fallagh Lower, Mountfield
31	Hair Salon	48 Mullydoo Road, Sheskinshule, Greencastle
32	Workshop	32 Pollanroe Road, Crockanboy, Omagh
33	Workshop	25 Main Street,
34	Hair Salon	25 Main Street, Aghalane, Mountfield

Map	Building Use	Address
35	Unknown	29 Main Street, Aghalane, Mountfield
36	Hair Salon	5a Forest View, Aghalane, Mountfield
37	Hot food takeaway	60a Barony Road, Aghalane, Mountfield
38	Quarry/Industrial	14 Main Street, Aghalane, Mountfield
39	Post Office/shop	22 Inisclan Road, Aghalane, Mountfield
40	Workshop/industrial	16a Main Street, Aghalane, Mountfield

Source: Business Rates databased, desk based research by Quod

Figure 4.2: Commercial Properties within Owenkillew (local view)



5 TOURISM AND RECREATION

5.1 The Northern Ireland Statistics and Research Agency estimates that non-domestic tourism generated £541 million to the economy in 2014 and domestic tourism generated £219 million. Of this the greatest share comprised the Belfast City local authority area (£243 million). Fermanagh and Omagh LGD comprised an estimated £64 million for both domestic and non-domestic tourism.

5.2 Owenkillew SOA is not a significant tourist destination within the AONB or LGD. There are some attractions within the area: visitor and heritage centres; parks and nature walks; cycle routes and rivers and lakes. Figure 5.1 shows the location of the main tourist routes and assets in Owenkillew. The closest these come to the site is 2km. There is little or no known tourism activity immediately around the site. Pollan Rua cottage used to be an operational holiday rental home, but is owned by DGL Ltd and has not operated as such since 2015.

a) Tourist Accommodation

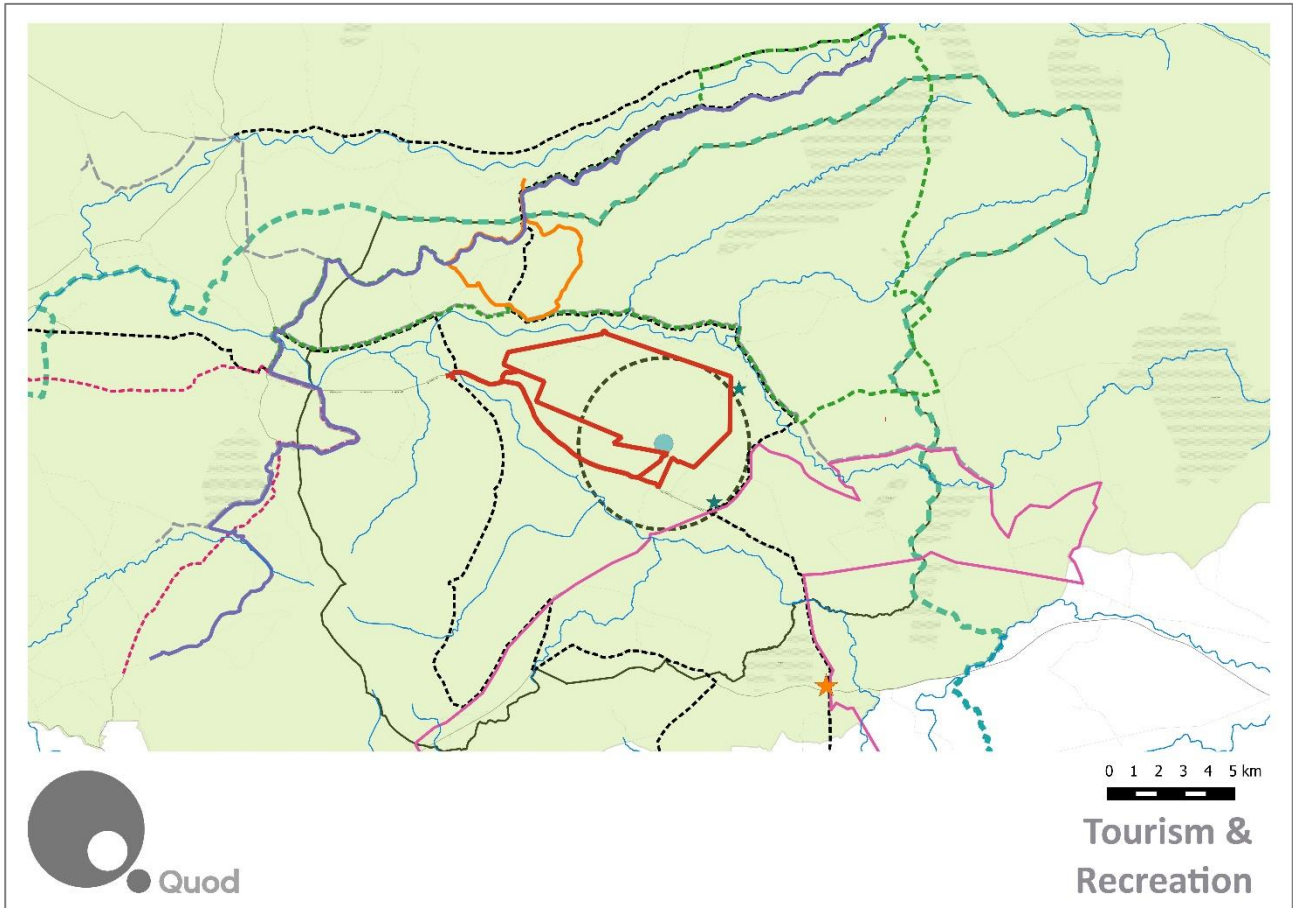
5.3 The Northern Ireland Tourist Board and Quod's own research indicates that there is a total of 93 visitor accommodation establishments in the Fermanagh and Omagh LGD. Of these 14 are classified as hotels, the remainder comprise of guesthouses (3), bed and breakfast (27), self-catering (47) and hostels (1). These establishments have a combined estimated number of bedrooms of 766.

5.4 Only two of these are located within Owenkillew – Pat Larry's Self Catering Cottage and Hawthorn Cottage. Both are located on Greencastle Road. They have four bedspaces each. They are marked on Figure 5.1 above and both roughly 2km away from the centre of Proposed Infrastructure Layout.

b) Visitor Centres

5.5 Visitor and heritage centres in the vicinity include the Ulster-American Folk Park, the an Creagán Visitor Centre, the Omagh Living History Park and Baron's Court Estate. These are all more than 10km away from the Project Site.

Figure 5.1: Recreation Routes and Tourist Attractions



- 5.6 An Creagán Visitor Centre, located approximately 10 km southeast of the Project Area, provides a programme of cultural events with traditional music, storytelling and dancing. It also offers a range of long and short walks including a 5.5 km Forest & River Trail, Biodiversity Trail, cycle hire and Storybook Trail for children. The centre attracted 35,750 visitors in 2014 – up from 23,500 in 2010. The centre is marked with an orange star on Figure 5.1.
- 5.7 The Ulster-American Folk Park, located outside Omagh (approx. 15 km to the southwest of the Project Area) is one of the major tourist attractions in Northern Ireland. The park is an outdoor museum which tells the story of emigration from Ulster to America in the 18th and 19th centuries. In 2014 it attracted approx. 130,434 visitors.
- 5.8 Baron’s Court Estate approx. 20 km to the west of the Project Area has served as the privately-owned estate home of the Duke of Abercorn since 1612. The estate now includes accommodation and a conference centre.
- 5.9 The Ulster American Folk Park and Baron’s Court Estate are beyond the extent of the map at Figure 5.1.
- 5.10 The Sperrin Heritage Centre was near the village of Sperrin to the northeast of the Project Area. It provided exhibitions and audio-visual presentations on the local flora and fauna and the geology, history and culture of the area. The centre is now closed indefinitely.

c) Cycling and walking

- 5.11 There are parks and walks in the AONB, although none immediately around the Project Site. Gortin Glen Forest Park is 10 km to the southwest and An Creagán forest 10 km to the southeast. The cycle routes listed below would also be used by ramblers and hikers.
- 5.12 Although no specific information on user numbers for each of these amenities is available, information compiled by the Northern Ireland Tourist Board on visitors’ experiences of Tyrone and the Sperrins indicates that 16% of visitors to the area visited a park or a garden. This could be in this area, or any other part of Tyrone and the Sperrins.
- 5.13 In recent years, Northern Ireland has made considerable progress in developing its national cycle network. Primary cycle routes in the vicinity of the Project Area include National Cycle Route 95 and

various routes in the Sperrin Mountains. The following national demarcated routes on the pass through Owenkillew and are marked on Figure 5.1:

- The Ulster Way (also covers parts of 92 Cycle Route and Sperrin Route 1&2)
- White Hare Cycle Route
- Vinegar Hill Loop
- South Sperrins Scenic Route
- Gold Cycle Route
- 95 Cycle route
- Central Sperrins Scenic Route

5.14 No detailed information exists as to the number of visitors and local people using these routes but each route is publicised on-line and via tourist information centres. Local, national and international visitors to these routes are expected.

5.15 The closest any of these routes comes to the Project Site is 2km from the Proposed Infrastructure Layout.

5.16 Cycles are available to hire from the An Creagán Visitor Centre.

d) Rivers and Lakes (Fishing and Water Sports)

5.17 Rivers and lakes in the vicinity of the Project Area which can be used for kayaking, canoeing and angling include Gortin Lakes as well as the Owenkillew River. The Gortin Lakes are a series of small lakes to the south of the village of Gortin, 7.5 km to the southwest of the Project Area which are suitable for kayaking and canoeing.

5.18 While the stretch of the Owenkillew River directly to the north of the Project Area is not suitable for canoeing or other boating, access to the river is available further downstream at Killymore Bridge Canoe Steps, on the B46 (approximately 4 km to the east of Newtown Stewart or 12 km from the Project Area).

5.19 The Owenkillew is a spate river well suited to salmon and sea trout fishing. Omagh Anglers control a large part of the lower stretch of the Owenkillew just east of Newtown Stewart to the confluence of the Glenelly River. The stretch between the “Magistrates” and Trinamadan Bridge further up the Owenkillew River is owned by the Blakiston Houston Estate, can also be fished with a permit.

5.20 There is no consolidated list of local fishing licences available. Local consultation by DGL indicates that local fishing permits (which allow the holder to fish specific stretches of water) amount to approximately 1,260 people who are allowed to fish on the Owenreagh and Owenkillew Rivers in a given year.

5.21 Any member of the below clubs/syndicates has the right to fish locally. Most anglers are interested in the section between Gortin and Newtown Stewart with a few fishing out as far as the point where the Owenreagh flows into the Owenkillew. Local evidence indicates that few anglers are interested in the waters upstream of that point.

- Omagh Anglers: 800 members
- Omagh Anglers’ visitors: c. 200 p.a.
- Smaller private clubs around Omagh: 100 members
- Gaff Anglers’ Club: 100 members
- Anglers registered with Dick Huston (local syndicate manager): 60 members
- **Total:** **1,260 annual users**



APPENDIX 1:

Buildings within 2km of the centre of the infrastructure layout

Count	Residential Addresses
1	174 Crockanboy Road, Teebane West, Greencastle
2	176 Crockanboy Road, Teebane West, Rouskey
3	177 Crockanboy Road, Teebane West, Rouskey
4	183 Crockanboy Road, Teebane West, Greencastle
5	184 Crockanboy Road, Teebane West, Greencastle
6	186 Crockanboy Road, Teebane West, Greencastle
7	187 Crockanboy Road, Teebane West, Greencastle
8	188 Crockanboy Road, Teebane West, Greencastle
9	191 Crockanboy Road, Teebane West, Greencastle
10	193 Crockanboy Road, Teebane West, Greencastle
11	197 Crockanboy Road, Teebane West, Greencastle
12	200 Crockanboy Road, Teebane West, Greencastle
13	204 Crockanboy Road, Teebane West, Greencastle
14	207 Crockanboy Road, Teebane West, Greencastle
15	208 Crockanboy Road, Teebane West, Rouskey
16	209 Crockanboy Road, Teebane West, Greencastle
17	210 Crockanboy Road, Teebane West, Greencastle
18	212 Crockanboy Road, Teebane West, Greencastle
19	213 Crockanboy Road, Teebane West, Greencastle
20	216 Crockanboy Road, Teebane West, Greencastle
21	217 Crockanboy Road, Teebane West, Greencastle
22	219 Crockanboy Road, Teebane West, Omagh
23	225 Crockanboy Road, Teebane West, Greencastle
24	231 Crockanboy Road, Crockanboy, Omagh
25	234 Crockanboy Road, Crockanboy, Greencastle
26	235 Crockanboy Road, Crockanboy, Greencastle
27	240 Crockanboy Road, Crockanboy, Omagh
28	244 Crockanboy Road, Crockanboy, Greencastle
29	248 Crockanboy Road, Crockanboy, Greencastle
30	250 Crockanboy Road, Crockanboy, Greencastle

Count	Residential Addresses
31	252 Crockanboy Road, Crockanboy, Greencastle
32	254 Crockanboy Road, Crockanboy, Greencastle
33	255 Crockanboy Road, Crockanboy, Omagh
34	256 Crockanboy Road, Crockanboy, Greencastle
35	258 Crockanboy Road, Crockanboy, Greencastle
36	260 Crockanboy Road, Crockanboy, Greencastle
37	264 Crockanboy Road, Crockanboy, Greencastle
38	268 Crockanboy Road, Sheskinshule, Greencastle
39	271 Crockanboy Road, Sheskinshule, Omagh
40	276 Crockanboy Road, Sheskinshule, Greencastle
41	277 Crockanboy Road, Sheskinshule, Omagh
42	285 Crockanboy Road, Sheskinshule, Greencastle
43	286 Crockanboy Road, Sheskinshule, Greencastle
44	291 Crockanboy Road, Sheskinshule, Greencastle
45	184a Crockanboy Road, Teebane West, Greencastle
46	216a Crockanboy Road, Teebane West, Omagh
47	231-233 Crockanboy Road, Crockanboy, Omagh
48	235a Crockanboy Road, Crockanboy, Greencastle
49	235b Crockanboy Road, Crockanboy, Mountfield
50	254a Crockanboy Road, Crockanboy, Greencastle
51	Adj to 217 Crockanboy Road, Teebane West, Greencastle
52	Adj to 240 Crockanboy Road, Crockanboy, Omagh
53	125 Greencastle Road, Crockanboy, Mountfield
54	132 Greencastle Road, Sheskinshule, Mountfield
55	134 Greencastle Road, Sheskinshule, Mountfield
56	140 Greencastle Road, Sheskinshule, Mountfield
57	146 Greencastle Road, Sheskinshule, Mountfield
58	147 Greencastle Road, Sheskinshule, Mountfield
59	148 Greencastle Road, Sheskinshule, Mountfield
60	156 Greencastle Road, Sheskinshule, Mountfield

Count	Residential Addresses
61	158 Greencastle Road, Sheskinshule, Mountfield
62	188 Greencastle Road, Monanameal, Mountfield
63	196 Greencastle Road, Monanameal, Mountfield
64	198 Greencastle Road, Monanameal, Mountfield
65	200 Greencastle Road, Monanameal, Mountfield
66	202 Greencastle Road, Monanameal, Mountfield
67	204 Greencastle Road, Monanameal, Mountfield
68	206 Greencastle Road, Monanameal, Mountfield
69	208 Greencastle Road, Monanameal, Mountfield
70	210 Greencastle Road, Monanameal, Mountfield
71	216 Greencastle Road, Monanameal, Mountfield
72	225 Greencastle Road, Monanameal, Mountfield
73	158a Greencastle Road, Sheskinshule, Mountfield
74	206a Greencastle Road, Monanameal, Mountfield
75	208a Greencastle Road, Monanameal, Mountfield
76	210a Greencastle Road, Monanameal, Mountfield
77	Adj to 208 Greencastle Road, Monanameal, Mountfield
78	Adj to 215 Greencastle Road, Monanameal, Mountfield
79	Adj to 216 Greencastle Road, Monanameal, Mountfield
80	1 Maryville, Sheskinshule, Omagh
81	2 Maryville, Sheskinshule, Omagh
82	3 Maryville, Sheskinshule, Omagh
83	4 Maryville, Sheskinshule, Omagh
84	5 Maryville, Sheskinshule, Omagh
85	6 Maryville, Sheskinshule, Omagh
86	7 Maryville, Sheskinshule, Omagh
87	8 Maryville, Sheskinshule, Omagh
88	9 Maryville, Sheskinshule, Omagh
89	10 Maryville, Sheskinshule, Omagh
90	11 Maryville, Sheskinshule, Omagh

Count	Residential Addresses
91	12 Maryville, Sheskinshule, Omagh
92	13 Maryville, Sheskinshule, Omagh
93	14 Maryville, Sheskinshule, Omagh
94	15 Maryville, Sheskinshule, Omagh
95	16 Maryville, Sheskinshule, Omagh
96	17 Maryville, Sheskinshule, Omagh
97	18 Maryville, Sheskinshule, Omagh
98	19 Maryville, Sheskinshule, Omagh
99	20 Maryville, Sheskinshule, Omagh
100	21 Maryville, Sheskinshule, Omagh
101	22 Maryville, Sheskinshule, Omagh
102	23 Maryville, Sheskinshule, Omagh
103	24 Maryville, Sheskinshule, Omagh
104	25 Maryville, Sheskinshule, Omagh
105	26 Maryville, Sheskinshule, Omagh
106	27 Maryville, Sheskinshule, Omagh
107	28 Maryville, Sheskinshule, Omagh
108	29 Maryville, Sheskinshule, Omagh
109	30 Maryville, Sheskinshule, Omagh
110	31 Maryville, Sheskinshule, Omagh
111	32 Maryville, Sheskinshule, Omagh
112	33 Maryville, Sheskinshule, Omagh
113	34 Maryville, Sheskinshule, Omagh
114	35 Maryville, Sheskinshule, Omagh
115	36 Maryville, Sheskinshule, Omagh
116	37 Maryville, Sheskinshule, Omagh
117	38 Maryville, Sheskinshule, Omagh
118	39 Maryville, Sheskinshule, Omagh
119	40 Maryville, Sheskinshule, Omagh
120	41 Maryville, Sheskinshule, Omagh

Count	Residential Addresses
121	42 Maryville, Sheskinshule, Omagh
122	43 Maryville, Sheskinshule, Omagh
123	44 Maryville, Sheskinshule, Omagh
124	45 Maryville, Sheskinshule, Omagh
125	46 Maryville, Sheskinshule, Omagh
126	47 Maryville, Sheskinshule, Omagh
127	48 Maryville, Sheskinshule, Omagh
128	49 Maryville, Sheskinshule, Omagh
129	50 Maryville, Sheskinshule, Omagh
130	51 Maryville, Sheskinshule, Omagh
131	56 Mullydoo Road, Crockanboy, Greencastle
132	7 Pollanroe Road, Crockanboy, Omagh
133	9 Pollanroe Road, Crockanboy, Omagh
134	11 Pollanroe Road, Crockanboy, Omagh
135	20 Pollanroe Road, Crockanboy, Omagh
136	21 Pollanroe Road, Crockanboy, Omagh
137	22 Pollanroe Road, Crockanboy, Omagh
138	23 Pollanroe Road, Crockanboy, Omagh
139	28 Pollanroe Road, Crockanboy, Omagh
140	Adj to 28 Pollanroe Road, Crockanboy, Omagh
141	1 Sheskinshule View, Sheskinshule, Omagh
142	2 Sheskinshule View, Sheskinshule, Omagh
143	3 Sheskinshule View, Sheskinshule, Omagh
144	4 Sheskinshule View, Sheskinshule, Omagh
145	5 Sheskinshule View, Sheskinshule, Omagh
146	7 Sheskinshule View, Sheskinshule, Omagh
147	8 Sheskinshule View, Sheskinshule, Omagh
148	9 Sheskinshule View, Sheskinshule, Omagh
149	10 Sheskinshule View, Sheskinshule, Omagh
150	11 Sheskinshule View, Sheskinshule, Omagh

Count	Residential Addresses
151	12 Sheskinshule View, Sheskinshule, Omagh
152	14 Sheskinshule View, Sheskinshule, Omagh
153	15 Sheskinshule View, Sheskinshule, Omagh
154	16 Sheskinshule View, Sheskinshule, Omagh
155	17 Sheskinshule View, Sheskinshule, Omagh
156	19 Sheskinshule View, Sheskinshule, Omagh
157	21 Sheskinshule View, Sheskinshule, Omagh
158	23 Sheskinshule View, Sheskinshule, Omagh
159	25 Sheskinshule View, Sheskinshule, Omagh
160	27 Sheskinshule View, Sheskinshule, Omagh
161	29 Sheskinshule View, Sheskinshule, Omagh
162	31 Sheskinshule View, Sheskinshule, Omagh
163	33 Sheskinshule View, Sheskinshule, Omagh
164	35 Sheskinshule View, Sheskinshule, Omagh
165	37 Sheskinshule View, Sheskinshule, Omagh
166	39 Sheskinshule View, Sheskinshule, Omagh
167	6a Sheskinshule View, Sheskinshule, Omagh
168	6b Sheskinshule View, Sheskinshule, Omagh